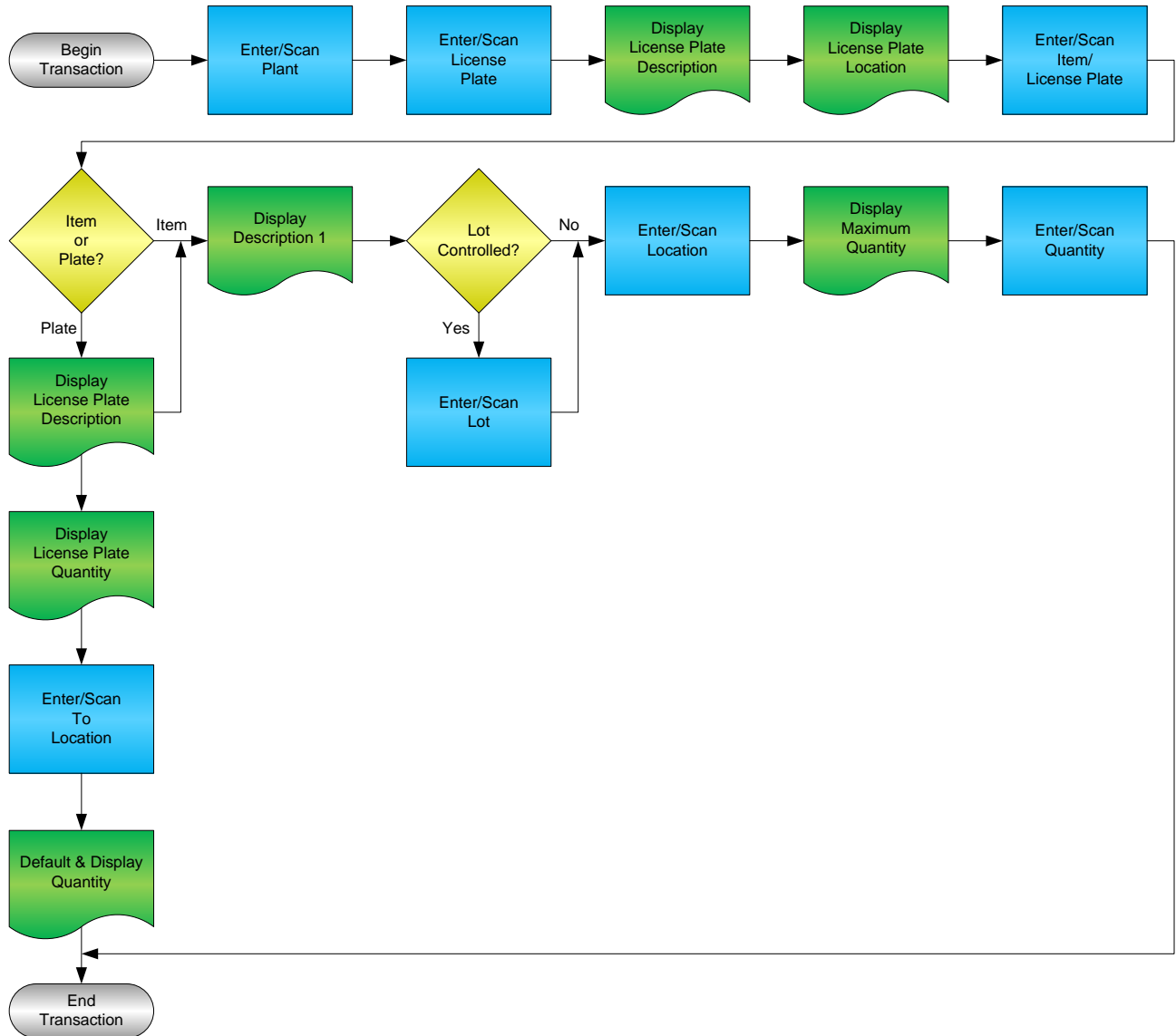


License Plate Detach Item



RFgen Software
1101 Investment Boulevard, Suite 250
El Dorado Hills, CA 95762
888-426-3472

License Agreement

All information contained in this document is the intellectual property of RFgen Software, a division of the DataMAX Software Group, Inc. This document may not be published, nor used without the prior written consent of RFgen Software. Use of the RFgen Software Open Source code is at all times subject to the DataMAX Software Group Open Source Licensing Agreement, which must be accepted at the time the source code is installed on your computer system. For your convenience, a text copy of the DataMAX Software Group Open Source Licensing Agreement is also loaded (and may be printed from) your RFgen-based system.

Requirements

- RFgen Version 5.0 or later
- RFgen JD Edwards Integration Suite

Table of Contents

LICENSE PLATE DETACH ITEM	1
FLPDI0100 – LICENSE PLATE DETACH ITEM	3
✓ VALIDATIONS	4
✓ EDITS	4
⇄ FUNCTION KEYS	4
ENTERPRISEONE PROGRAMS – REFERENCE	5
ENTERPRISEONE INVENTORY TRANSFERS: P4113	5
ENTERPRISEONE CARDEX:P4111	5
RFGEN INPUT REQUIREMENTS	6
JD EDWARDS PROCESSING OPTION SETTINGS.....	6
EXECUTION PROCEDURES	7
OVERALL TEST CASE RESULTS	8

FLPDI0100 – License Plate Detach Item

LP - Detach Item

Plant 30

LP # 30011

LPLATE DEMO 1

1 .A .1

Item # 3000

Lot # 200567

LP Qty: 10 EA

To Locn 1 .C .1

max Qty 10 EA

Qty 2

Enter to Accept

This transaction allows you to detach items from an existing license plate that will be held in the License Plating database in the master tables. It creates an inventory transfer of the item from the location stored in the license plate table to the selected location if they differ.

The following conditions apply to the RFgen implementation for the License Plate Detach Item transaction within the EnterpriseOne environment.

Note: any of these parameters may be easily adjusted to meet the unique requirements of your company.

✓ Validations

Prompt	Table	Field
Branch Plant	F41001	CIMCU
License Plate Number	F55101	LMLPID
Item Number	F4101	IMLITM
To Location	F41021	LMLOCN

✓ Edits

Condition	Table
Default Branch Plant	F40095

↔ Function Keys

Key	Function
F1	Search Data for Current Field
F2	Refresh the Current Screen Display
F3	
F4	Exits Transaction

EnterpriseOne Programs – Reference

Application Name(s)	Code	Table
Inventory Transfers	P4113	NA
Item Ledger (Cardex)	P4111	F4111

EnterpriseOne Inventory Transfers: P4113

QK Can... New... Dis... Abo Links ▼ Item S... OLE ... Internet

Document Number: 126

Document Type: IT Inventory Transfers Transaction Date: 10/13/2005

G/L Date: []

Explanation: RFGen License Plate IT Batch Number: 497

From Branch/Plant: 30 To Branch/Plant: 30

Item Number	Item Description	Quantity	UM	Secondary Quantity	Sec UoM	From Location	From Lot/S
2008	Head Set		3- EA				

EnterpriseOne Cardex:P4111

Select Find Close Seg... New... Dis... Abo Links ▼ Detail OLE ... Internet

Item Number: 2008 Head Set

Branch/Plant: 30

Location: * Transaction Date: * - *

Lot/Serial: * Document Type: *

Quantity On Hand: 499 EA Value: 9,431.10

Secondary On Hand: EA

Document Number	Doc Type	Doc Co	Transaction Date	Branch/Plant	Quantity	Trans UoM	Secondary Transaction Qty	Location
126	IT	00001	10/13/2005	30	3- EA			
126	IT	00001	10/13/2005	30	3 EA			1.B

Test Script Description: LP Detach Item to Plate

RFgen Input Requirements

Before you begin testing, ensure, for the combination of branch/plant(s) and item(s) you will be testing, that the following is setup in EnterpriseOne or PeopleSoft World.

- a. Plant
- b. License Plate Number
- c. Item Number
- d. Location
- e. Quantity

JD Edwards Processing Option Settings

Enter the Processing Option values, which correspond, to the version you selected for testing.

JDE Version: ZJDE0001 _____

Tab	Processing Option Description	Value
Defaults	<ol style="list-style-type: none"> a. Document Type b. From Location/Lot c. To Location Lot 	
Process	<ol style="list-style-type: none"> a. Lots on Hold b. Transfer Quantity c. Lot Status Default 	

Note: The above processing options are set in Inventory Transfer (P4113)—they are referred to here for clarity, and to show the dependency between these two functional areas.

Execution Procedures

ID	Test Case	Expected Result	Pass	Fail
1	Type in a valid Plant _____ Press the ENTER key	RFGEN will validate and accept the plant entered		
2	Type in a valid LP# _____ Press the ENTER key	RFGEN will validate and accept the license plate number entered.		
3	Type in a valid Item# _____ Press the ENTER key	RFGEN will validate and accept the item number entered		
4	Type in a valid Locn _____ Press the ENTER key	RFGEN will validate and accept the location entered		
5	Type in a valid Qty _____ Press the ENTER key	RFGEN will validate and accept the quantity entered		
6	Type in an invalid Plant _____ Press the ENTER key	RFGEN will validate and display an error message – the field will continue to error out until corrected		
7	Type in an invalid LP# _____ Press the ENTER key	RFGEN will validate and display an error message – the field will continue to error out until corrected		
8	Type in an invalid Item# _____ Press the ENTER key	RFGEN will validate and display an error message – the field will continue to error out until corrected		
9	Type in an invalid Locn _____ Press the ENTER key	RFGEN will validate and display an error message – the field will continue to error out until corrected		
10	Type in an invalid Qty _____ Press the ENTER key	RFGEN will validate and display an error message – the field will continue to error out until corrected		
11	Press the “F1” key with the cursor in the Plant field	RFGEN will display a list of branch/plants		
12	Press the “F1” key with the cursor in the Plant field to select and return an Plant	RFGEN will display a list of branch/plants and when selected, the Plant will be returned		
13	Press the “F1” key with the cursor in the LP# field	RFGEN will display a list of license plate numbers		
14	Press the “F1” key with the cursor in the LP# field to select and return an LP#	RFGEN will display a list of license plate numbers and when selected, the LP# will be returned		
15	Press the “F1” key with the cursor in the Item# field	RFGEN will display a list of item numbers		

16	Press the "F1" key with the cursor in the Item# field to select and return an Item#	RFGEN will display a list of item numbers and when selected, the Item# will be returned		
17	At the RFGEN "Enter to Accept Prompt" the transaction is added to EnterpriseOne	Confirm the Detach Item to Plate results		

Overall Test Case Results

Pass/Fail	
Tester/Date	
RE-Tester/Date	

Actual Results	
----------------	--

Comments	
----------	--