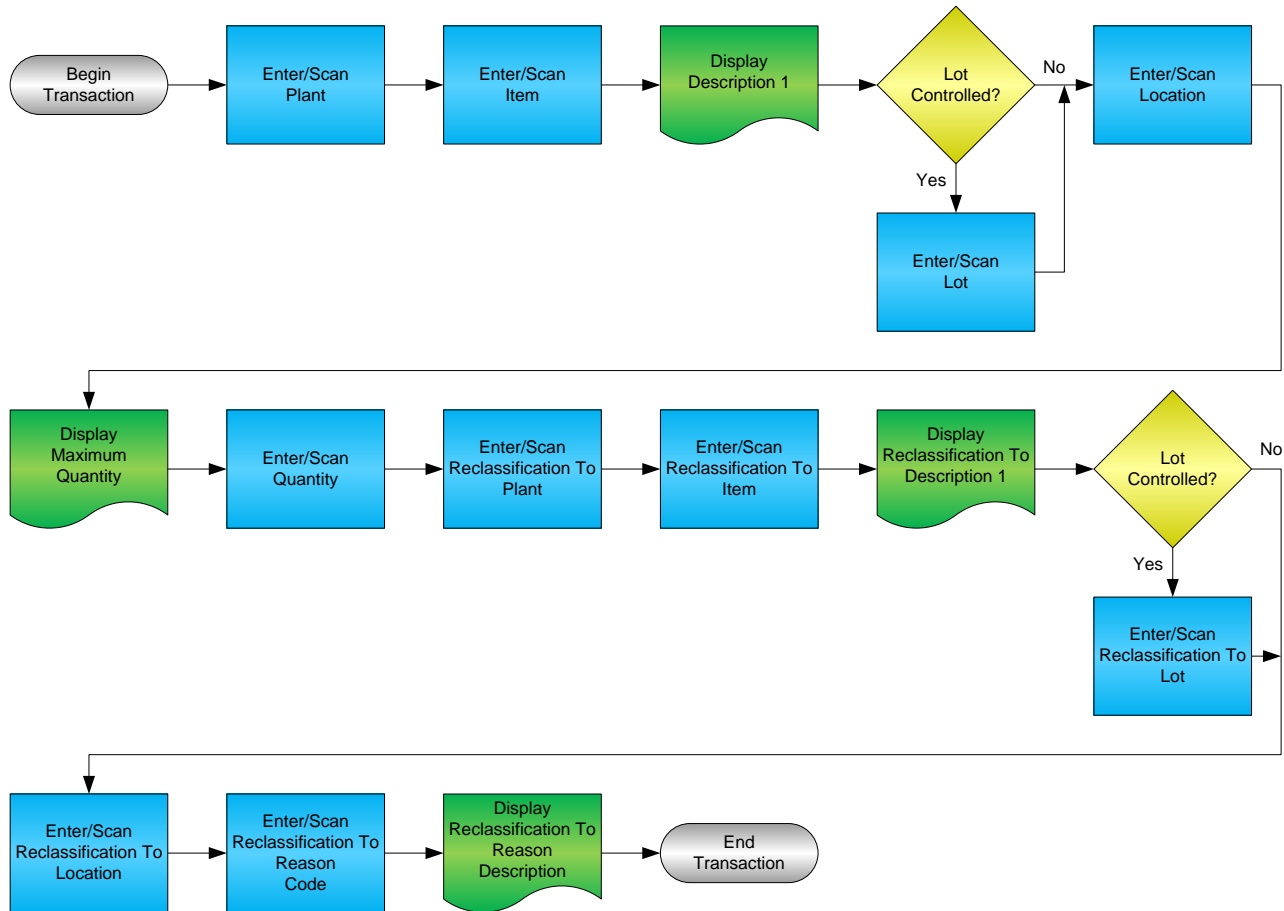


Inventory Reclassification



RFgen Software
1101 Investment Boulevard, Suite 250
El Dorado Hills, CA 95762
888-426-3472

License Agreement

All information contained in this document is the intellectual property of RFgen Software, a division of the DataMAX Software Group, Inc. This document may not be published, nor used without the prior written consent of RFgen Software. Use of the RFgen Software Open Source code is at all times subject to the DataMAX Software Group Open Source Licensing Agreement, which must be accepted at the time the source code is installed on your computer system. For your convenience, a text copy of the DataMAX Software Group Open Source Licensing Agreement is also loaded (and may be printed from) your RFgen-based system.

Requirements

- RFgen Version 5.0 or later
- RFgen JD Edwards Integration Suite

Table of Contents

INVENTORY RECLASSIFICATION	1
FIMIR0200 – INVENTORY RECLASSIFICATION	3
✓ VALIDATIONS	4
✓ EDITS	4
⇄ FUNCTION KEYS	4
CONSIDERATIONS	5
ENTERPRISEONE PROGRAMS – REFERENCE	6
ENTERPRISEONE INVENTORY RECLASSIFICATIONS: P4116	6
ENTERPRISEONE CARDEX: P4111	6
AFFECTED RFGEN FORMS AND TRANSACTION MACROS	8
SETUP AN RFGEN MENU	8
RFGEN INPUT REQUIREMENTS	11
JD EDWARDS PROCESSING OPTION SETTINGS.....	11
EXECUTION PROCEDURES	12
OVERALL TEST CASE RESULTS	13

FIMIR0200 – Inventory Reclassification



This transaction performs a reclassification of inventory within the same warehouse. Two Inventory Transfer records are recorded and the Item Ledger (Cardex) is updated in EnterpriseOne.

The following conditions apply to the RFgen implementation for the Inventory Reclassification transaction within the EnterpriseOne environment.

Note: any of these parameters may be easily adjusted to meet the unique requirements of your company.

✓ Validations

Prompt	Table	Field
From Plant	F41001	CIMCU
To Plant	F41001	CIMCU
From Item	F4101	IMLITM
From Location	F41021	LILOCN
From Lot	F4108	IOLOTN
Quantity	F41021	LIPQOH
To Item	F4101	IMLITM
To Location	F4100	LMLOCN
To Lot	F4108	IOLOTN
Reason	F0005	UDC 42/RC

✓ Edits

Condition	Table
Default Branch Plant	F40095
Quantity not greater than Quantity on Hand	F41021
Quantity entered <=0	NA

↔ Function Keys

Key	Function
F1	Search Data for Current Field
F2	Refresh the Current Screen Display
F3	
F4	Exits Transaction

Considerations

1. What OW version is used to process the Inventory Reclassification transaction?
2. What processing options are set to process Inventory Reclassifications?
3. Will an item be allowed to be transferred and reclassified to another Branch?
4. Will the Branch default in based on user?
5. Are limitations placed on any Inventory Reclassifications such as dollar amounts?
6. Do you use locations, and if so, are there any special circumstances that need to be considered? (i.e. always issue from a particular location?)
7. Is lot control in use?
8. Is serialization turned on for any items?

EnterpriseOne Programs – Reference

Application Name(s)	Code	Table
Inventory Reclassification	P4116	NA
Item Ledger (Cardex)	P4111	F4111

EnterpriseOne Inventory Reclassifications: P4116

OK Can... New... Dis... Abo... Links ▼ Item S... OLE ... Internet

Document Number:
 Document Type: Transaction Date:
 G/L Date:
 Explanation: Batch Number:
 From Branch/Plant: To Branch/Plant:

Line Number	From /To	Transaction Group No.	Related From Line No.	Item Number	Item Description	Quantity	UM	Seco Quar
1.000	F	0.000	0.000	2015	Wheel Set, Front	1	EA	
2.000	T	0.000	0.000	2016	Wheel Set, Rear	1	EA	

EnterpriseOne Cardex: P4111

Select Find Close Seg... New... Dis... Abo... Links ▼ Detail OLE ... Internet

Item Number: Wheel Set, Front
 Branch/Plant:
 Location: Transaction Date: -
 Lot/Serial: Document Type:
 Quantity On Hand: Value:
 Secondary On Hand:

8/16/2005

Document Number	Doc Type	Doc Co	Transaction Date	Branch/ Plant	Quantity	Trans UoM	Secondary Transaction Qty	Secondary Trans UoM
101	IT	00001	8/16/2005	30	1	EA		

Select Find Close Seg... New... Dis... Ago Links Detail OLE... Internet

Item Number: 2016 Wheel Set, Rear

Branch/Plant: M30

Location: * Transaction Date: * - *

Lot/Serial: * Document Type: *

Quantity On Hand: 101 EA Value: 3,555.20

Secondary On Hand: EA

Document Number	Doc Type	Doc Co	Transaction Date	Branch/Plant	Quantity	Trans UoM	Secondary Transaction Qty	Secondary Trans UoM
101	IT	00001	8/16/2005	M30	1	EA		

How JD Edwards® Processing Option affects RFgen

This documentation explains which of the JDE Processing Options are used by RFgen and how the red highlighted Proc.Options effect the RFgen script.

Affected RFgen Forms and Transaction Macros

Description	Form Name	Transaction Macro Name
IM - Inventory Reclass.	FIMIR0100	TIMIR0100

Setup an RFgen Menu

To implement an RFgen Form using JDE Processing Options in an RFgen Menu the JDE Version needs to be specified.

Enter the Form name, followed by a Space. Enter “-Vers=” and the JDE Version.

Form/Menu	Description to Display
FIMIR0100 -Vers=ZJDE0001	1-Reclassification

Processing Options: P4116 Item Reclassifications

---- <-- Defaults -->

0001 1 2> **Document Type** --> [IT]

RFgen retrieves the Document Type from the JDE Processing Option.

0002 1 3> Assign Expiration Dates --> []

---- <-- Versions -->

0003 2 2> **Journal Entries (P0911)** --> []

RFgen passes the specified Version to the related Business Function.

0004 2 3> Item Search (P40ITM2) --> []

0005 2 4> Item Ledger (P4111) --> []

0006 2 5> Warehouse Request (P46100) (FUTURE) --> []

---- <-- Process -->

0007 3 2> Cost Entry --> []

0008 3 3> **Journal Entries** --> []

RFgen passes the specified Value to the related Business Function.

0009 3 4> **Lots on Hold** --> [1]

Depending on this value RFgen allows issuing when a lot is on Hold.

0010 3 5> **Reclassification Quantity** --> [1]

RFgen calculates and validates the max qty. to Adjust regarding to this value.

0011 3 6> Quantity Validation --> []

---- <-- Interop -->

0012 4 1> Transaction Type --> []

---- <-- Agreement -->

0013 5 1> Agreement Assignment (FUTURE) --> []

---- <-- Warehouse -->

0014 6 1> Enter a '1' to allow manual entry of lic --> []

Basic Test Script

1. Record quantities on hand from the Item Ledger for the Branch Plants, Item Numbers and their associated lots and locations for items being reclassified.
2. Create and document the following scenarios:
 - a. Reclassify an item not exceeding either items quantity on hand.
 - b. Attempt to reclassify the same item.
 - c. If your customization required a limit to be placed on an item to reclassify such as threshold limits of quantities or dollar amounts, attempt to reclassify within the criteria. Appropriate errors should appear.
 - d. Attempt to reclassify an item and transfer it to a Branch Plant that is not set up for that item.
3. Review the Reclassification Table and the Item Ledger for the proper document types, transaction records, and that the quantity on hand updated to the correct amounts on the processed transactions.

Test Script Description: Item Reclassification (P4116)

RFgen Input Requirements

Before you begin testing, ensure, for the combination of branch/plant(s) and item(s) you will be testing, that the following is setup in EnterpriseOne or PeopleSoft World.

- a. Item
- b. Quantity On Hand
- c. Quantity Available

JD Edwards Processing Option Settings

Enter the Processing Option values, which correspond, to the version you selected for testing.

JDE Version: ZJDE0001_____

Tab	Processing Option Description	Value
Defaults	a. Document Type	
Process	a. Journal Entries b. Lots on Hold c. Reclassification Quantity	

Execution Procedures

ID	Test Case	Expected Result	Pass	Fail
1	Type in a valid Branch/Plant _____ Press the ENTER key	RFGEN will validate and accept the branch/plant entered.		
2	Type in a valid Item# _____ Press the ENTER key	RFGEN will validate and accept the item entered.		
3	Type in a valid locn _____ Press the ENTER key	RFGEN will validate and accept the locn entered.		
4	Type in an invalid Branch/Plant _____ Press the ENTER key	RFGEN will validate the branch/plant entered and display an error message – the field will continue to error out until corrected		
5	Type in an invalid Item# _____ Press the ENTER key	RFGEN will validate and display an error message – the field will continue to error out until corrected		
6	Type in an invalid locn _____ Press the ENTER key	RFGEN will validate and display an error message – the field will continue to error out until corrected		
7	Press the “F1” key with the cursor in the branch/plant field	RFGEN will display a list of branch/plants		
8	Press the “F1” key with the cursor in the branch/plant field to select and return a branch/plant to the branch/plant field	RFGEN will display a list of branch/plants and when selected, the branch/plant will be returned to the branch/plant field		
9	Press the “F1” key with the cursor in the item# field	RFGEN will display a list of items		
10	Press the “F1” key with the cursor in the locn field	RFGEN will display a list of locations		
11	Press the “F1” key with the cursor in the locn field to select and return a location to the locn field	RFGEN will display a list of locations and when selected, the location will be returned to the locn field		
12	Press the “F1” key with the cursor in the item# field to select and return an item to the item# field	RFGEN will display a list of items and when selected, the item will be returned to the item# field		
13	If the Journal Entries processing option is set to “blank” and the item is not lot controlled Item# ____ Qty __ F/Loc____ T/Loc _____	RFGEN will decrease the quantity in the <i>from</i> location and increase the quantity in the <i>to</i> location; detailed journal entries will be recorded in the General Ledger		

14	If the Journal Entries processing option is set to "1" and the item is not lot controlled Item# ____ Qty __ F/Loc__ T/Loc ____	RFGEN will decrease the quantity in the <i>from</i> location and increase the quantity in the <i>to</i> location; summary journal entries will be recorded in the General Ledger		
15	If the Journal Entries processing option is set to "blank" and the item is lot controlled Item# ____ Qty __ F/Loc__ T/Loc ____	RFGEN will decrease the quantity in the <i>from</i> location/lot and increase the quantity in the <i>to</i> location/lot; detailed journal entries will be recorded in the General Ledger		
16	If the Journal Entries processing option is set to "1" and the item is not lot controlled Item# ____ Qty __ F/Loc__ T/Loc ____	RFGEN will decrease the quantity in the <i>from</i> location and increase the quantity in the <i>to</i> location; summary journal entries will be recorded in the General Ledger		
17	If the Lot on Hold processing option is set to "blank" Item# ____ Qty __ F/Loc__ T/Loc ____	RFGEN will disallow the reclassification and display an error message		
18	If the Lot on Hold processing option is set to "1" Item# ____ Qty __ F/Loc__ T/Loc ____	RFGEN will allow the reclassification		
19	If the Reclassification Quantity processing option is set to "1" Item# ____ Qty __ F/Loc__ T/Loc ____	RFGEN will allow a negative quantity available		
20	If the Reclassification Quantity processing option is set to "blank" Item# ____ Qty __ F/Loc__ T/Loc ____	RFGEN will disallow negative availability and display an error message		
21	At the RFGEN "Enter to Accept Prompt" the transaction is added to EnterpriseOne	Confirm the inventory reclassification results		

Overall Test Case Results

Pass/Fail	
Tester/Date	
RE-Tester/Date	

Actual Results	
-----------------------	--

Comments	
-----------------	--