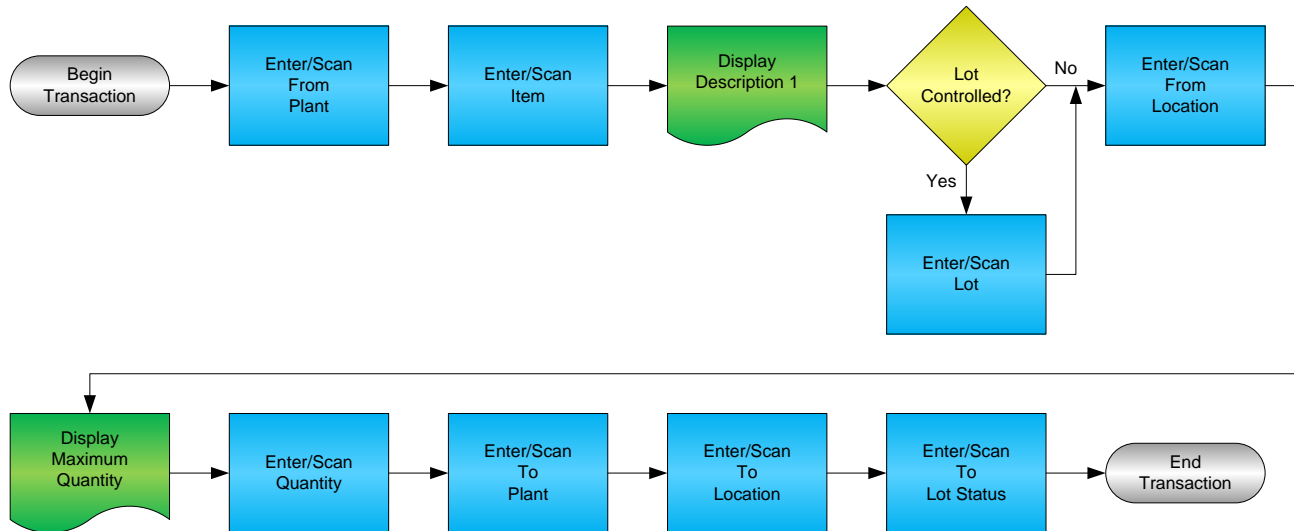


# Inventory Transfer



**RFgen Software**  
1101 Investment Boulevard, Suite 250  
El Dorado Hills, CA 95762  
888-426-3472

## License Agreement

All information contained in this document is the intellectual property of RFgen Software, a division of the DataMAX Software Group, Inc. This document may not be published, nor used without the prior written consent of RFgen Software. Use of the RFgen Software Open Source code is at all times subject to the DataMAX Software Group Open Source Licensing Agreement, which must be accepted at the time the source code is installed on your computer system. For your convenience, a text copy of the DataMAX Software Group Open Source Licensing Agreement is also loaded (and may be printed from) your RFgen-based system.

## Requirements

- RFgen Version 5.0 or later
- RFgen JD Edwards Integration Suite

## Table of Contents

INVENTORY TRANSFER .....	1
FIMIT0100 – INVENTORY TRANSFER.....	3
✓ VALIDATIONS .....	4
✓ EDITS .....	4
⇄ FUNCTION KEYS .....	4
CONSIDERATIONS .....	5
ENTERPRISEONE PROGRAMS – REFERENCE .....	6
ENTERPRISEONE INVENTORY TRANSFER: P4113 .....	6
ENTERPRISEONE CARDEX: P4111 .....	6
AFFECTED RFGEN FORMS AND TRANSACTION MACROS .....	7
SETUP AN RFGEN MENU .....	7
RFGEN INPUT REQUIREMENTS .....	10
JD EDWARDS PROCESSING OPTION SETTINGS.....	10
EXECUTION PROCEDURES .....	11
OVERALL TEST CASE RESULTS .....	13

## FIMIT0100 – Inventory Transfer

Inventory Transfers

From

Plant 30

Item# 3000

Lot# 200567

Cyclometer

Locn 1.A .1

Qty 5

88 EA available

To

Plant 30

Locn 1.C .1

Enter to Accept

This transaction transfers inventory from a warehouse to another warehouse or from one location to another location within a warehouse. An Inventory Transfer record is recorded and the Item Ledger (Cardex) is updated in EnterpriseOne.

The following conditions apply to the RFgen implementation for the Inventory Transfer transaction within the EnterpriseOne environment.

Note: any of these parameters may be easily adjusted to meet the unique requirements of your company.

## ✓ Validations

Prompt	Table	Field
Plant	F41001	CIMCU
Item	F4101	IMLITM
From Location	F41021	LILOCN
To Location	F4100	LMLOCN
Lot	F4108	IOLOTN
Quantity	F41021	LIPQOH
Reason	F0005	UDC 42/RC

## ✓ Edits

Condition	Table
Default Branch Plant	F40095
Quantity not greater than Quantity on Hand	F41021
Quantity entered <=0	NA

## ↩ Function Keys

Key	Function
F1	Search Data for Current Field
F2	Refresh the Current Screen Display
F3	
F4	Exits Transaction

## Considerations

1. What EnterpriseOne version is used to process the Inventory Transfer transaction?
2. What processing options are set to process Inventory Transfer?
3. What document types are used?
4. Does Branch default based on user?
5. Will negative quantities be allowed?
6. Is lot control used?
7. Are serialized items in use?

## EnterpriseOne Programs – Reference

Application Name(s)	Code	Table
Inventory Transfers	P4113	NA
Item Ledger (Cardex)	P4111	F4111

### EnterpriseOne Inventory Transfer: P4113

OK Can... New... Dis... Abo Links ▼ Item S... OLE ... Internet

Document Number: 101

Document Type: IT Inventory Transfers Transaction Date: 8/15/2005

GIL Date:

Explanation: RFGen Inv Transfer Batch Number: 214

From Branch/Plant: 30 To Branch/Plant: M30

Item Number	Item Description	Quantity	UM	Secondary Quantity	Sec UoM	From Location
2004	Cro-Moly Frame		12- EA			

### EnterpriseOne Cardex: P4111

Select Find Close Seg... New... Dis... Abo Links ▼ Detail OLE ... Internet

Item Number: 2004 Cro-Moly Frame

Branch/Plant: \*

Location: \* Transaction Date: \* - \*

Lot/Serial: \* Document Type: \*

Quantity On Hand: 4165 EA Value: 429,011.39

Secondary On Hand: EA

8/15/2005

Document Number	Doc Type	Doc Co	Transaction Date	Branch/Plant	Quantity	Trans UoM	Secondary Transaction Qty	Secondary Trans UoM
101	IT	00001	8/15/2005	30	12- EA			
101	IT	00001	8/15/2005	M30	12 EA			

## How JD Edwards® Processing Option affects RFgen

This documentation explains which of the JDE Processing Options are used by RFgen and how the red highlighted Proc.Options effect the RFgen script.

### Affected RFgen Forms and Transaction Macros

Description	Form Name	Transaction Macro Name
IM - Inventory Transfers	FIMIT0100	TIMIT0100

### Setup an RFgen Menu

To implement an RFgen Form using JDE Processing Options in an RFgen Menu the JDE Version needs to be specified.

Enter the Form name, followed by a Space. Enter “-Vers=” and the JDE Version.

Form/Menu	Description to Display
FIMIT0100 -Vers=ZJDE0001	1-Transfer



## Processing Options: P4113 Inventory Transfers

---- <-- Defaults -->

0001 1 1> **Document Type** --> [IT]

RFgen retrieves the Document Type from the JDE Processing Option.

0002 1 2> **FROM Location/Lot** --> [1]

If "1" RFgen defaults Lot Number and Location from Primary Location.

0003 1 3> **TO Location/Lot** --> [1]

If "1" RFgen defaults Lot Number and Location from Primary Location.

---- <-- Versions -->

0004 2 2> Journal Entries (P0911) --> [ ]

0005 2 3> Item Ledger (P4111) --> [ ]

---- <-- Process -->

0006 3 1> Cost Entry --> [ ]

0007 3 2> Journal Entries --> [ ]

0008 3 3> **Lots on Hold** --> [1]

Depending on this value RFgen allows issuing when a lot is on Hold.

0009 3 4> **Transfer Quantity** --> [2]

RFgen calculates and validates the max qty. to transfer based on this value.

0010 3 5> **Lot Status Default** --> [1]

Depending on this value RFgen copies the Lot status to the new location.

---- <-- Interop -->

0011 4 1> Transaction Type --> [ ]

---- <-- Agreement -->

0012 5 1> Agreement Assignment (FUTURE) --> [ ]

## Basic Test Script

1. Record quantities on hand from the Item Ledger for the Branch Plants, Item Numbers and their associated lots and locations that you will perform Inventory Transfers on.
2. Create and document the following scenarios:
  - a. Transfer an amount within the quantity on hand for an item.
  - b. Transfer a negative amount for an item. A negative issue warning should appear.
  - c. Transfer more than the quantity on hand for an item. An “Exceeding quantity on hand” error should appear.
  - d. Attempt to transact on items that are not set up in particular branch plants.
  - e. Attempt to transfer an item to the same location. A “Branch Plant or Location error” should appear.
  - f. If the setup required a transfer quantity threshold be placed on an item, attempt to issue over the quantity amount authorized for a particular item. An “exceeding threshold limit” error should appear.
3. Review the Transfer Table and the Item Ledger for the proper document types, transaction records, and that the quantity on hand updated to the correct amounts on the processed transactions.

## Test Script Description: Inventory Transfer (P4113)

### RFgen Input Requirements

Before you begin testing, ensure, for the combination of branch/plant(s) and item(s) you will be testing, that the following is setup in EnterpriseOne or PeopleSoft World.

- a. Item
- b. Quantity On Hand
- c. Quantity Available

### JD Edwards Processing Option Settings

Enter the Processing Option values, which correspond, to the version you selected for testing.

**JDE Version:** ZJDE0001\_\_\_\_\_

Tab	Processing Option Description	Value
Defaults	<ol style="list-style-type: none"> <li>a. Document Type</li> <li>b. From Location/Lot</li> <li>c. To Location Lot</li> </ol>	
Process	<ol style="list-style-type: none"> <li>a. Lots on Hold</li> <li>b. Transfer Quantity</li> <li>c. Lot Status Default</li> </ol>	

## Execution Procedures

ID	Test Case	Expected Result	Pass	Fail
1	Type in a valid Branch/Plant _____ Press the <b>ENTER</b> key	RFGEN will validate and accept the branch/plant entered.		
2	Type in a valid Item# _____ Press the <b>ENTER</b> key	RFGEN will validate and accept the item entered.		
3	Type in a valid locn _____ Press the <b>ENTER</b> key	RFGEN will validate and accept the locn entered.		
4	Type in an invalid Branch/Plant _____ Press the <b>ENTER</b> key	RFGEN will validate the branch/plant entered and display an error message – the field will continue to error out until corrected		
5	Type in an invalid Item# _____ Press the <b>ENTER</b> key	RFGEN will validate and display an error message – the field will continue to error out until corrected		
6	Type in an invalid locn _____ Press the <b>ENTER</b> key	RFGEN will validate and display an error message – the field will continue to error out until corrected		
7	Press the “F1” key with the cursor in the branch/plant field	RFGEN will display a list of branch/plants		
8	Press the “F1” key with the cursor in the branch/plant field to select and return a branch/plant to the branch/plant field	RFGEN will display a list of branch/plants and when selected, the branch/plant will be returned to the branch/plant field		
9	Press the “F1” key with the cursor in the item# field	RFGEN will display a list of items		
10	Press the “F1” key with the cursor in the locn field	RFGEN will display a list of locations		
11	Press the “F1” key with the cursor in the locn field to select and return a location to the locn field	RFGEN will display a list of locations and when selected, the location will be returned to the locn field		
12	Press the “F1” key with the cursor in the item# field to select and return an item to the item# field	RFGEN will display a list of items and when selected, the item will be returned to the item# field		
13	If the From Location/Lot processing option is set to “blank” and the location specified is invalid Item# _____ Qty _____ Location _____	RFGEN will validate the location and display an error message		

14	If the From Location/Lot processing option is set to "1" Item#_____ Qty____ Location_____	RFGEN will validate the location information and default the transfer quantity from the primary location		
15	If the Transfer Quantity processing option is set to "blank" and the quantity entered exceeds the available quantity at the specified location Item#_____ Qty____ Location_____	RFGEN will disallow the quantity and display an error message		
16	If the Transfer Quantity processing option is set to "1" and the quantity entered exceeds the available quantity at the specified location Item Number_____ Location_____	RFGEN will allow the available quantity to go negative		
17	If the Transfer Quantity processing option is set to "2" and the quantity entered exceeds the on hand quantity at the specified location Item#_____ Qty____ Location_____	RFGEN will disallow the quantity and display an error message		
18	If the Lot on Hold processing option is set to "blank" Item#_____ Qty____ Location_____	RFGEN will not allow the lot to be used for an inventory transfer.		
19	If the Lot on Hold processing option is set to "1" Item#_____ Qty____ Location_____	RFGEN will allow the lot to be used for an inventory transfer.		
20	If the Lot Status Default processing option is set to "blanks" Item#_____ Qty____ Location_____	RFGEN will default the lot status from the "From" location to the "To" location		
21	If the Lot Status Default processing option is set to "1" Item#_____ Qty____ Location_____	RFGEN will not default the lot status from the "From" location to the "To" location		
22	At the RFGEN "Enter to Accept Prompt" the transaction is added to EnterpriseOne	Confirm the inventory transfer results		

## Overall Test Case Results

<b>Pass/Fail</b>	
<b>Tester/Date</b>	
<b>RE-Tester/Date</b>	

<b>Actual Results</b>	
-----------------------	--

<b>Comments</b>	
-----------------	--