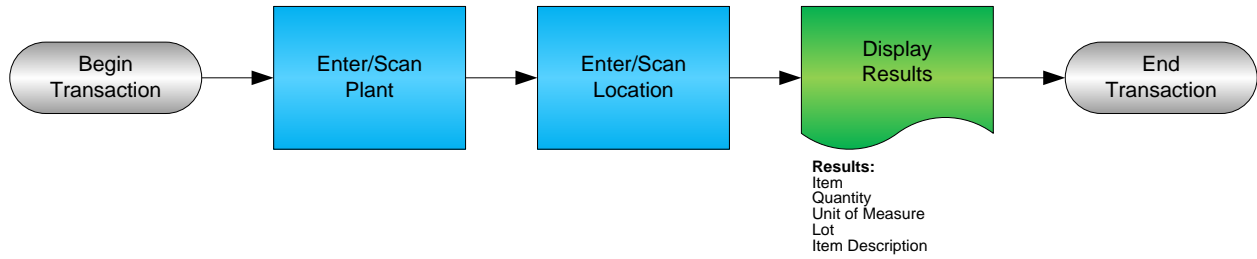


Item Inquiry by Location



RFgen Software
1101 Investment Boulevard, Suite 250
El Dorado Hills, CA 95762
888-426-3472

License Agreement

All information contained in this document is the intellectual property of RFgen Software, a division of the DataMAX Software Group, Inc. This document may not be published, nor used without the prior written consent of RFgen Software. Use of the RFgen Software Open Source code is at all times subject to the DataMAX Software Group Open Source Licensing Agreement, which must be accepted at the time the source code is installed on your computer system. For your convenience, a text copy of the DataMAX Software Group Open Source Licensing Agreement is also loaded (and may be printed from) your RFgen-based system.

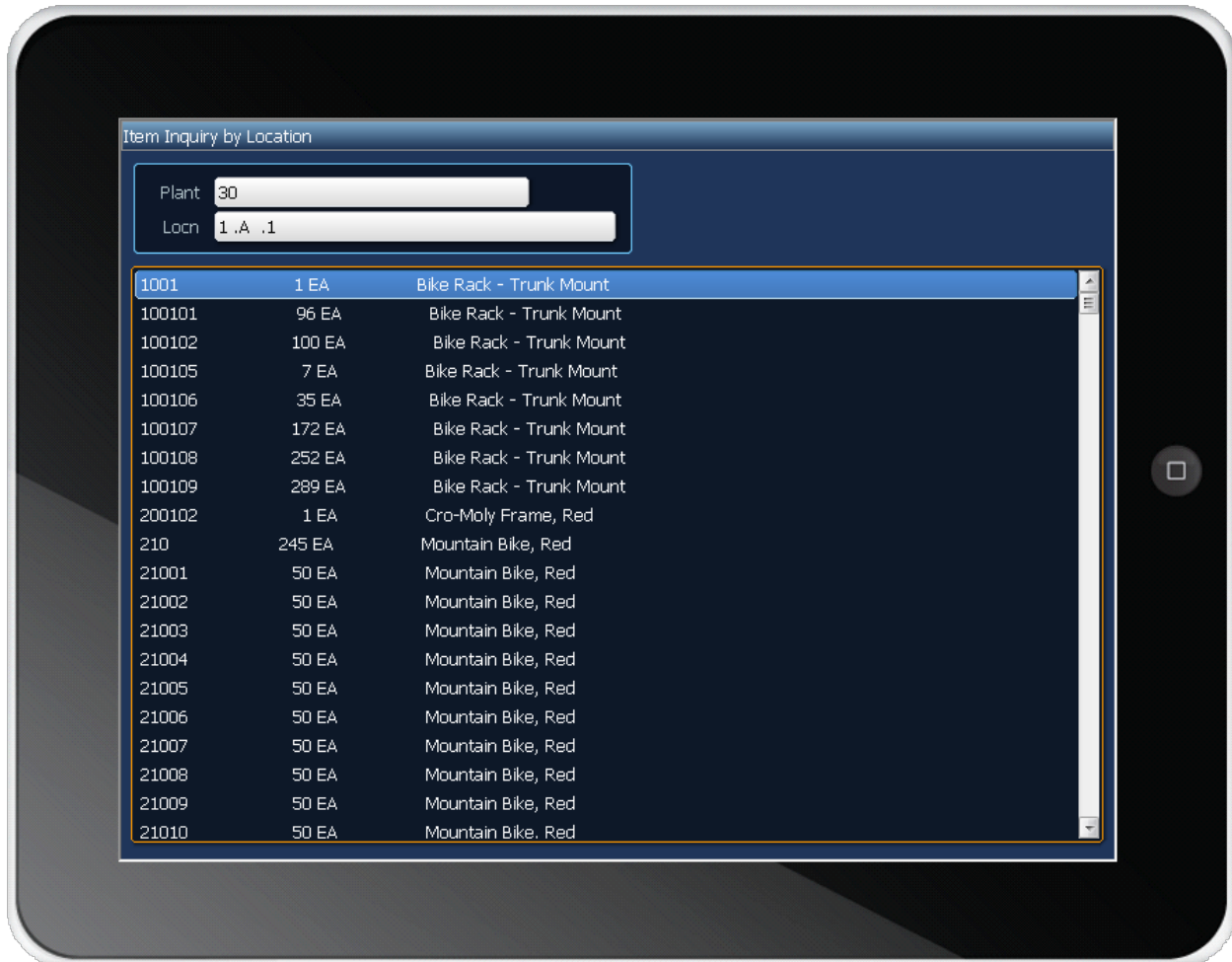
Requirements

- RFgen Version 5.0 or later
- RFgen JD Edwards Integration Suite

Table of Contents

ITEM INQUIRY BY LOCATION	1
FIMQL0100 – ITEM INQUIRY BY LOCATION.....	3
✓ VALIDATIONS	4
⇨ FUNCTION KEYS	4
ENTERPRISEONE PROGRAMS – REFERENCE	5
ENTERPRISEONE ITEM DETAIL AVAILABILITY: P4100	5
RFGEN INPUT REQUIREMENTS	6
JD EDWARDS PROCESSING OPTION SETTINGS.....	6
EXECUTION PROCEDURES	7
OVERALL TEST CASE RESULTS	8

FIMQL0100 – Item Inquiry by Location



This transaction displays inventory items by location with the current quantity on hand. If it is a lot item, the inquiry displays lot numbers, as well.

The following conditions apply to the RFgen implementation of the Item Inquiry by Location transaction within the EnterpriseOne environment.

Note: any of these parameters may be easily adjusted to meet the unique requirements of your company.

✓ Validations

Prompt	Table	Field
Plant	F41001	CIMCU
Location	F41021	LILOCN

↩ Function Keys

Key	Function
F1	Search Data for Current Field
F2	Refresh the Current Screen Display
F3	
F4	Exits Transaction

EnterpriseOne Programs – Reference

Application Name(s)	Code	Table
Item Detail Availability	P4100	F41021

EnterpriseOne Item Detail Availability: P4100

Select Find Close Seq... New... Dis... Abo...

Links ▼ Attach... OLE ... Internet

Branch/Plant

Location

	Item Number	Description	Lot/Serial	Quantity Available	Quantity Inbound	Quantity Outbound	UM
	220	Touring Bike, Red		6			EA
	2001	Cro-Moly Frame, Red		4			EA

Test Script Description: IM Inquiry by Location

RFgen Input Requirements

Before you begin testing, ensure, for the combination of branch/plant(s) and item(s) you will be testing, that the following is setup in EnterpriseOne or PeopleSoft World.

- a. Plant
- b. License Plate Number

JD Edwards Processing Option Settings

Enter the Processing Option values, which correspond, to the version you selected for testing.

JDE Version: ZJDE0001_____

Tab	Processing Option Description	Value

Execution Procedures

ID	Test Case	Expected Result	Pass	Fail
1	Type in a valid Plant _____ Press the ENTER key	RFGEN will validate and accept the plant entered		
2	Type in a valid Locn# _____ Press the ENTER key	RFGEN will validate and accept the location entered, and return a list box containing inventory items by location with the current quantity on hand. If the item is lotted, the inquiry will also display lot numbers.		
3	Type in an invalid Plant _____ Press the ENTER key	RFGEN will validate and display an error message – the field will continue to error out until corrected		
4	Type in an invalid LP# _____ Press the ENTER key	RFGEN will validate and display an error message – the field will continue to error out until corrected		
5	Press the “F1” key with the cursor in the Plant field	RFGEN will display a list of branch/plants		
6	Press the “F1” key with the cursor in the Plant field to select and return an Plant	RFGEN will display a list of branch/plants and when selected, the Plant will be returned		
7	Press the “F1” key with the cursor in the LP# field	RFGEN will display a list of license plate numbers		
8	Press the “F1” key with the cursor in the LP# field to select and return an LP#	RFGEN will display a list of license plate numbers and when selected, the LP# will be returned		
9	After reviewing the Inquiry by Location display	Confirm the Inquiry by Location results		

Overall Test Case Results

Pass/Fail	
Tester/Date	
RE-Tester/Date	

Actual Results	
-----------------------	--

Comments	
-----------------	--