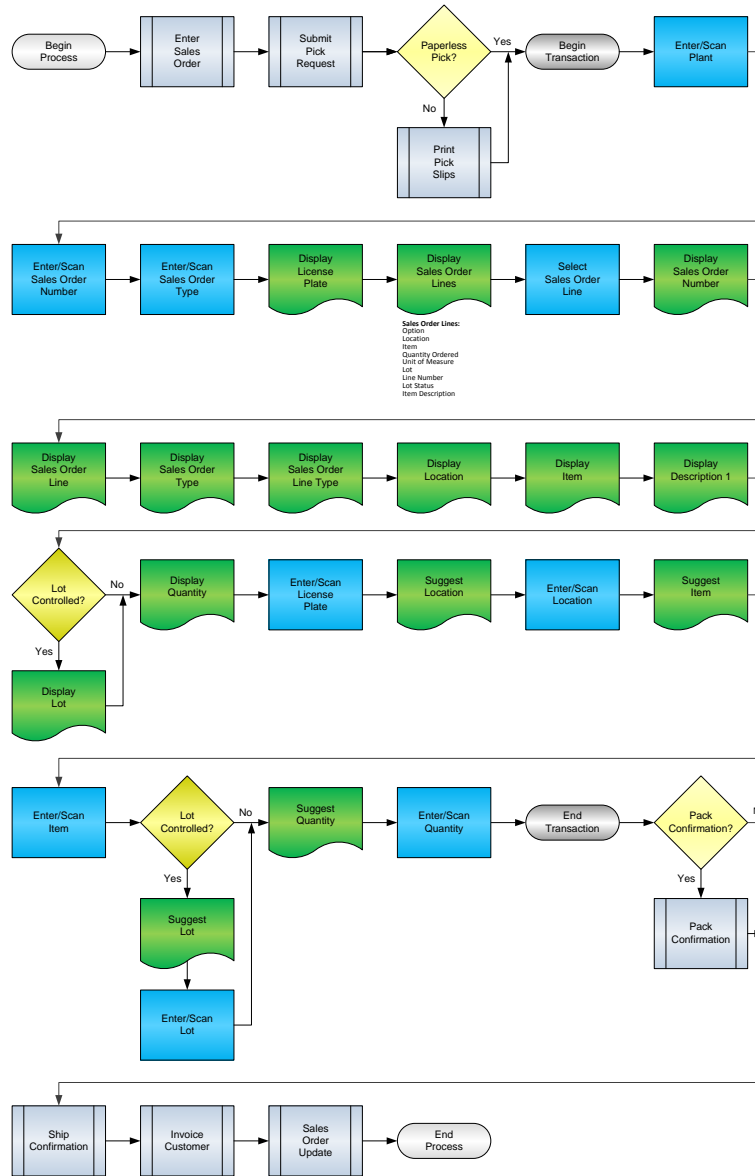


License Plate Pick Confirmation



RFgen Software
1101 Investment Boulevard, Suite 250
El Dorado Hills, CA 95762
888-426-3472

License Agreement

All information contained in this document is the intellectual property of RFgen Software, a division of the DataMAX Software Group, Inc. This document may not be published, nor used without the prior written consent of RFgen Software. Use of the RFgen Software Open Source code is at all times subject to the DataMAX Software Group Open Source Licensing Agreement, which must be accepted at the time the source code is installed on your computer system. For your convenience, a text copy of the DataMAX Software Group Open Source Licensing Agreement is also loaded (and may be printed from) your RFgen-based system.

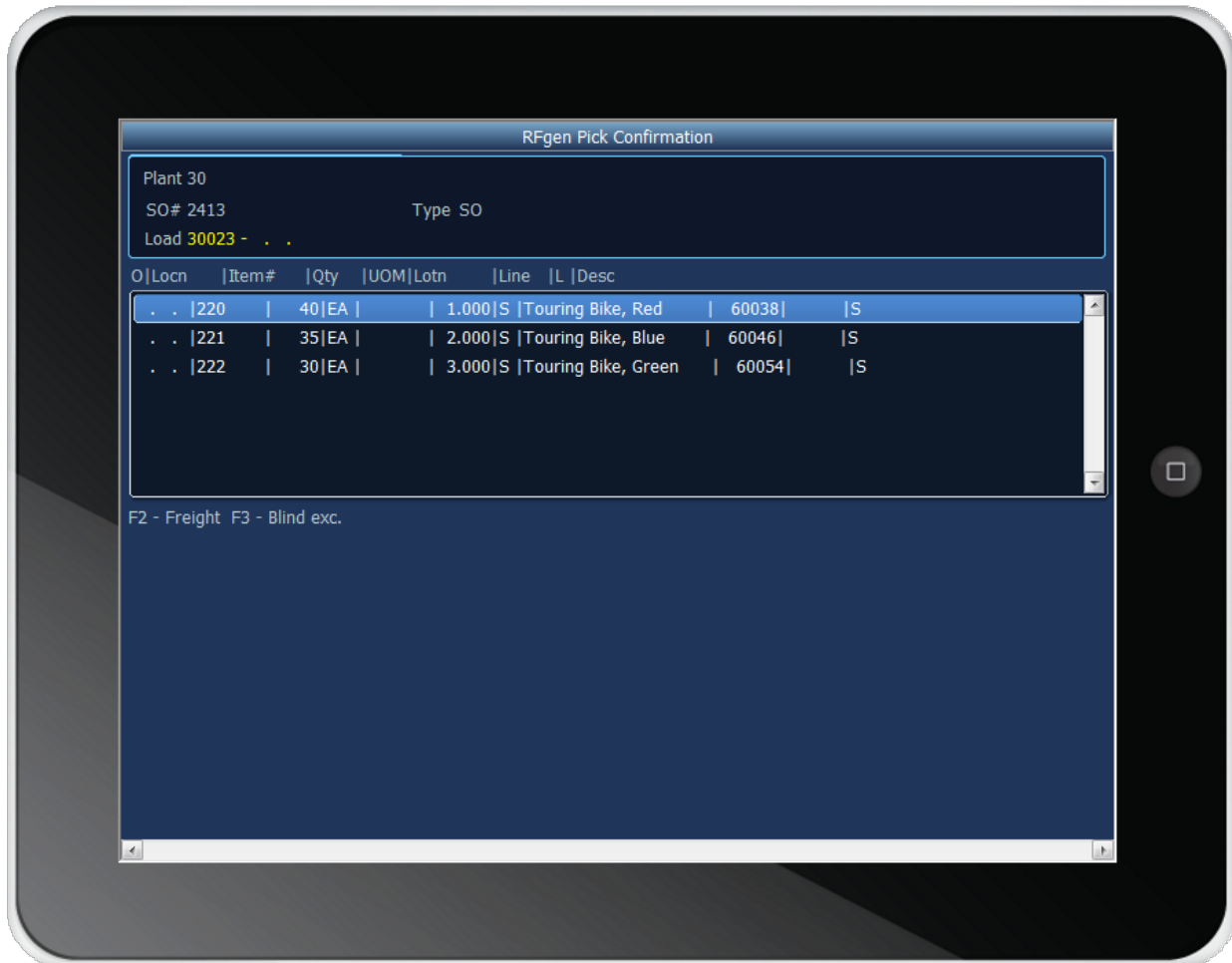
Requirements

- RFgen Version 5.0 or later
- RFgen JD Edwards Integration Suite

Table of Contents

LICENSE PLATE PICK CONFIRMATION.....	1
FLPPC0100 – LICENSE PLATE PICK CONFIRMATION	3
✓ VALIDATIONS	4
✓ EDITS	4
⇄ FUNCTION KEYS	4
ENTERPRISEONE PROGRAMS – REFERENCE	5
ENTERPRISEONE SHIP CONFIRMATION: P4205	5
RFGEN INPUT REQUIREMENTS	6
JD EDWARDS PROCESSING OPTION SETTINGS.....	6
EXECUTION PROCEDURES	7
OVERALL TEST CASE RESULTS	9

FLPPC0100 – License Plate Pick Confirmation



This transaction allows you to run an EnterpriseOne Sales Order Pick Confirm and attach the picked items to a license plate. Once this process is complete it is possible to run License Plate Transfer and License Plate Ship Confirm.

The following conditions apply to the RFgen implementation for the License Plate Pick Confirmation transaction within the EnterpriseOne environment.

Note: any of these parameters may be easily adjusted to meet the unique requirements of your company.

✓ Validations

Prompt	Table	Field
Branch Plant	F41001	CIMCU
Sales Order Number	F4211	SDDOCO
License Plate Number	F55101	LMLPID
Item Number	F4211	SDLITM
Location	F41021	LILOCN

✓ Edits

Condition	Table
Default Branch Plant	F40095

↔ Function Keys

Key	Function
F1	Search Data for Current Field
F2	Add Freight Line, New LP
F3	Blind Execution
F4	Exits Transaction

EnterpriseOne Programs – Reference

Application Name(s)	Code	Table
Ship Confirmation	P4205	

EnterpriseOne Ship Confirmation: P4205

Order Number	Or Ty	Order Co	Line Number	Sold To Number	Sold To Name	Ship To Number	Pick Number	Customer PO	Order Date	Br: Pl
149	SO	00001	1.000	4242	Capital System	4242			10/5/2005	

Test Script Description: LP Pick Confirmation (pick to plate)

RFgen Input Requirements

Before you begin testing, ensure, for the combination of branch/plant(s) and item(s) you will be testing, that the following is setup in EnterpriseOne or PeopleSoft World.

- a. Plant
- b. License Plate Number
- c. Sales Order Number
- d. Document Type
- e. Item Number
- f. Location
- g. Quantity

JD Edwards Processing Option Settings

Enter the Processing Option values, which correspond, to the version you selected for testing.

JDE Version: ZJDE0001_____

Tab	Processing Option Description	Value
Selection	<ol style="list-style-type: none"> a. Next Status From (Required) b. Next Status Thru (Required) 	
Defaults	<ol style="list-style-type: none"> a. Line Type for New Sales Detail Lines b. Add'l Non-inventory Line Items Entered 	
Display	<ol style="list-style-type: none"> a. Allow Additional Line Entry 	
Edits	<ol style="list-style-type: none"> a. Check Availability b. Ship from Negative On-hand Quantity c. Prevent Over-shipping 	
Process	<ol style="list-style-type: none"> a. Backorder or Cancel Unshipped Quantity b. Relieve On Hand Inventory Override 	

Note: The above processing options are set in Pick Confirmation (P4205)—they are referred to here for clarity, and to show the dependency between these two functional areas.

Execution Procedures

ID	Test Case	Expected Result	Pass	Fail
1	Type in a valid Plant _____ Press the ENTER key	RFGEN will validate and accept the plant entered		
2	Type in a valid LP# _____ Press the ENTER key	RFGEN will validate and accept the license plate number entered		
3	Type in a valid SO# _____ Press the ENTER key	RFGEN will validate and accept the sales order number entered.		
4	Type in a valid Type _____ Press the ENTER key	RFGEN will validate and accept the document type entered		
5	Type in a valid Item# _____ Press the ENTER key	RFGEN will validate and accept the item number entered		
6	Type in a valid Locn _____ Press the ENTER key	RFGEN will validate and accept the location entered		
7	Type in a valid Qty _____ Press the ENTER key	RFGEN will validate and accept the quantity entered		
8	Type in an invalid Plant _____ Press the ENTER key	RFGEN will validate and display an error message – the field will continue to error out until corrected		
9	Type in an invalid LP# _____ Press the ENTER key	RFGEN will validate and display an error message – the field will continue to error out until corrected		
10	Type in an invalid SO# _____ Press the ENTER key	RFGEN will validate and display an error message – the field will continue to error out until corrected		
11	Type in an invalid Type _____ Press the ENTER key	RFGEN will validate and display an error message – the field will continue to error out until corrected		
12	Type in an invalid Item# _____ Press the ENTER key	RFGEN will validate and display an error message – the field will continue to error out until corrected		
13	Type in an invalid Locn _____ Press the ENTER key	RFGEN will validate and display an error message – the field will continue to error out until corrected		
14	Type in an invalid Qty _____ Press the ENTER key	RFGEN will validate and display an error message – the field will continue to error out until corrected		
15	Press the “F1” key with the cursor in the Plant field	RFGEN will display a list of branch/plants		

16	Press the "F1" key with the cursor in the Plant field to select and return an Plant	RFGEN will display a list of branch/plants and when selected, the Plant will be returned		
17	Press the "F1" key with the cursor in the LP# field	RFGEN will display a list of license plate numbers		
18	Press the "F1" key with the cursor in the LP# field to select and return an LP#	RFGEN will display a list of license plate numbers and when selected, the LP# will be returned		
19	Press the "F1" key with the cursor in the SO# field	RFGEN will display a list of sales order numbers		
20	Press the "F1" key with the cursor in the SO# field to select and return an SO#	RFGEN will display a list of sales order numbers and when selected, the SO# will be returned		
21	Press the "F1" key with the cursor in the Type field	RFGEN will display a list of document types		
22	Press the "F1" key with the cursor in the Type field to select and return a Type	RFGEN will display a list of document types and when selected, the document type will be returned		
23	Press the "F1" key with the cursor in the Item# field	RFGEN will display a list of item numbers		
24	Press the "F1" key with the cursor in the Item# field to select and return an Item#	RFGEN will display a list of item numbers and when selected, the Item# will be returned		
25	Press the "F1" key with the cursor in the Locn field	RFGEN will display a list of locations		
26	Press the "F1" key with the cursor in the Locn field to select and return a Locn	RFGEN will display a list of locations and when selected, the Locn will be returned		
27	At the RFGEN "Enter to Accept Prompt" the transaction is added to EnterpriseOne	Confirm the Pick Confirmation (pick to plate) results		

Overall Test Case Results

Pass/Fail	
Tester/Date	
RE-Tester/Date	

Actual Results	
----------------	--

Comments	
----------	--