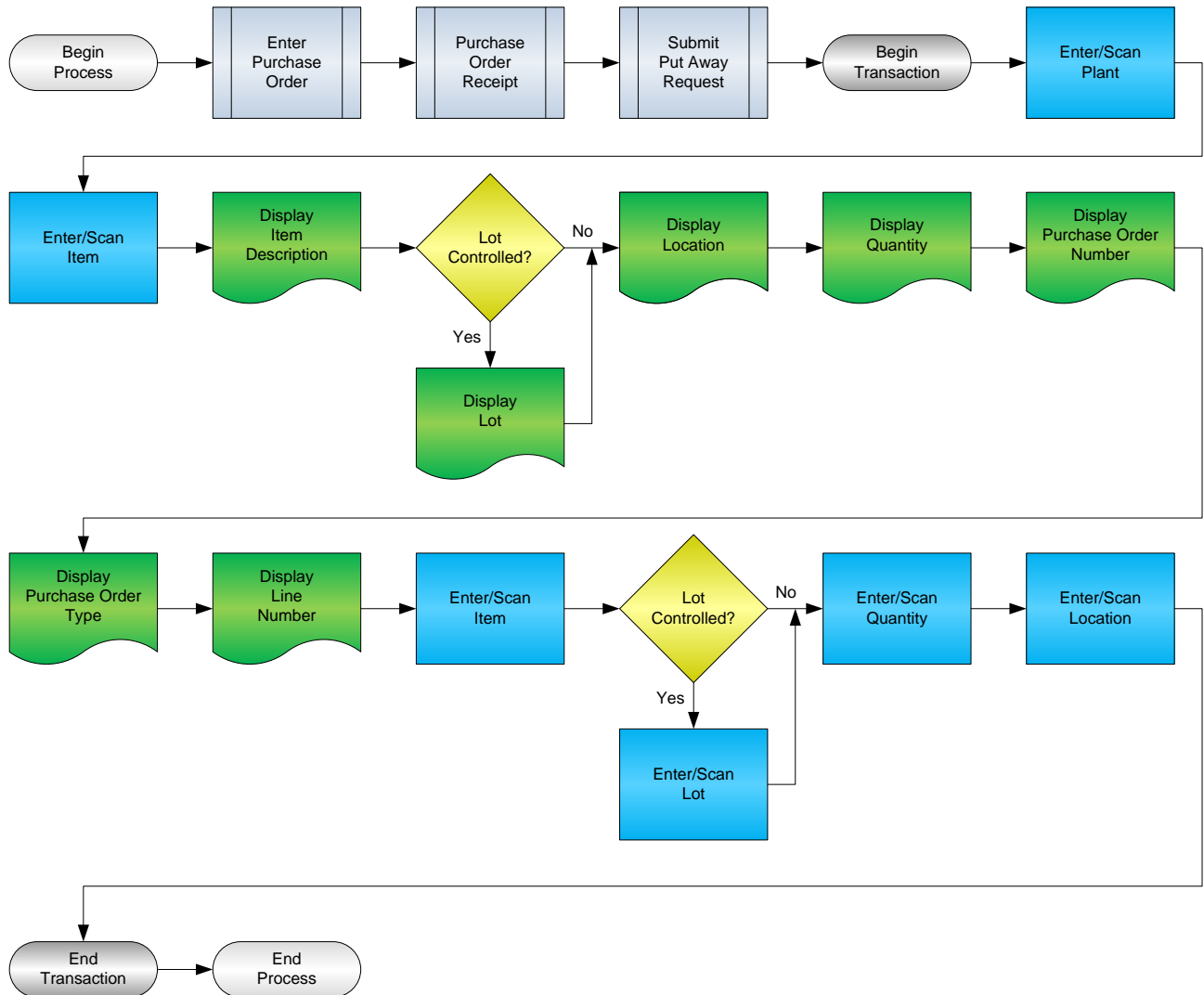


Warehouse Put Away by Item



RFgen Software
1101 Investment Boulevard, Suite 250
El Dorado Hills, CA 95762
888-426-3472

License Agreement

All information contained in this document is the intellectual property of RFgen Software, a division of the DataMAX Software Group, Inc. This document may not be published, nor used without the prior written consent of RFgen Software. Use of the RFgen Software Open Source code is at all times subject to the DataMAX Software Group Open Source Licensing Agreement, which must be accepted at the time the source code is installed on your computer system. For your convenience, a text copy of the DataMAX Software Group Open Source Licensing Agreement is also loaded (and may be printed from) your RFgen-based system.

Requirements

- RFgen Version 5.0 or later
- RFgen JD Edwards Integration Suite

Table of Contents

WAREHOUSE PUT AWAY BY ITEM	1
FWHPIO0100 – PUT AWAY BY ITEM	3
✓ VALIDATIONS	4
✓ EDITS	4
⇨ FUNCTION KEYS	4
ENTERPRISEONE PROGRAMS – REFERENCE	5
ENTERPRISEONE ENTER ITEM LEDGER: P4111	5
ENTERPRISEONE PUT AWAY CONFIRMATION: P4617	5
AFFECTED RFGEN FORMS AND TRANSACTION MACROS	6
SETUP AN RFGEN MENU	6
TEST SCRIPT DESCRIPTION: WH PUT AWAY BY ITEM (P4617)	8
RFGEN INPUT REQUIREMENTS	8
JD EDWARDS PROCESSING OPTION SETTINGS	8
EXECUTION PROCEDURES	9
OVERALL TEST CASE RESULTS	10

FWHPI0100 – Put Away by Item



This transaction creates movement transactions that transfer an item from the receiving location to the suggested put away location for the item. It also performs the Put Away confirmation, which closes out the task and updated the Item Ledger (Cardex) with the transfer information.

The following conditions apply to the RFgen implementation for the Put Away by Item transaction within the EnterpriseOne environment.

Note: any of these parameters may be easily adjusted to meet the unique requirements of your company.

✓ Validations

Prompt	Table	Field
Branch Plant	F4611	R2MCU
Purchase Order	F4611	R2DOCO
Item Number	F4611	R2LLITM
Location	F4611	R2TLOC

✓ Edits

Condition	Table
Default Branch Plant	F40095

↔ Function Keys

Key	Function
F1	Search Data for Current Field
F2	Refresh the Current Screen Display
F3	
F4	Exits Transaction

EnterpriseOne Programs – Reference

Application Name(s)	Code	Table
Item Ledger	P4111	F4111
Put Away Confirmation	P4717	

EnterpriseOne Enter Item Ledger: P4111

Select Find Close Seg... New... Dis... Abo Links Detail OLE ... Internet

Item Number: 210 Mountain Bike, Red
 Branch/Plant: 27
 Location: * Transaction Date: * - *
 Lot/Serial: * Document Type: *
 Quantity On Hand: 630 EA Value: 333,963.00
 Secondary On Hand: EA

Document Number	Doc Type	Doc Co	Transaction Date	Branch/Plant	Quantity	Trans UoM	Location	Secondary Transaction Qty	Second Trans U
64	IQ	00200	10/18/2005	27	10	EA	R. .		
64	IQ	00200	10/18/2005	27	10	EA	4.A .2		

EnterpriseOne Put Away Confirmation: P4617

Find Can... New... Proc... Dis... Abo Links Proce... OLE ... Internet

Branch/Plant: 27
 Task Number: * Phase: *
 Order Number: * * Status: *
 Item Number: 210 Mountain Bike, Red

Task	Trip	Item Number	From Location	To Location	Quantity	UM	Dual Quantity	Dual UOM	Branch/Plant
64	1.000	210	R. .	4.A .2	10	EA	10	EA	27

How JD Edwards® Processing Option affects RFgen

This documentation explains which of the JDE Processing Options are used by RFgen and how the red highlighted Proc.Options effect the RFgen script.

Affected RFgen Forms and Transaction Macros

Description	Form Name	Transaction Macro Name
Put Away by PO	FWHPP0100	TWHPC0100
Put Away by Item	FWHPI0100	TWHPC0100
Pick Confirm by Item	FWHCI0100	TWHPC0100
Pick Confirm by SO	FWHCS0100	TWHPC0100
Pick Confirm by Pick Number	FWHCS0101	TWHPC0100
Pick Confirm by Task Trip	FWHCS0102	TWHPC0100
Replenishment by Item	FWHRI0100	TWHPC0100
Manual Replenishment	FWHMR0100	TWHMR0100

Setup an RFgen Menu

To implement an RFgen Form using JDE Processing Options in an RFgen Menu the JDE Version needs to be specified.

Enter the Form name, followed by a Space. Enter “-Vers=” and the JDE Version.

Form/Menu	Description to Display
FWHPI0100 -Pgm=P4617 -Vers=ZJDE0001	Put Away by Item

Processing Options: P4617 Warehouse Confirmations

----- <-- Display -->

0001 1 1> **Program Mode** --> [1]

RFgen uses this value to filter on Warehouse Type (R2TYFL)

0002 1 2> **Phase Control Code** --> [2]

RFgen uses this value to filter on Phase (R2PHAS)

0003 1 3> **Default Suggestion Status** --> [340]

RFgen uses to filter on next Status (R2PSTB). If empty RFgen defaults to 340.

0004 1 4> **Shipping Location** --> [1]

If "1" RFgen allows to overwrite the Location.

----- <-- Prompts -->

0005 2 1> Location Verification --> [1]

0006 2 2> Auto Inquire --> []

----- <-- Move Tags -->

0007 3 1> Move Tag --> []

0008 3 2> Bar Code --> []

0009 3 3> Unit of Measure --> []

0010 3 4> Item/Location Quantity to Be Printed on --> []

0011 3 5> Enter the number of Duplicate Copies to --> []

0012 3 6> **DREAM Writer version of the move tags to** --> [XJDE0001]

Specified version is passed over to the related Business Function.

----- <-- Picking -->

0013 4 1> Override Next Status for Sales Order Lin --> [0]

0014 4 2> Override Next Status for Sales Order Lin --> []

0015 4 3> Warning/Error Display for Ship Ascending --> []

0016 4 4> Version of Pack Confirmation (P4216) --> []

----- <-- Bulk Pick -->

0017 5 1> Bulk Detail Report --> []

0018 5 2> Bulk Pick Detail Report (R46210) Version --> []

----- <-- Carton Det -->

0019 6 1> Carton Detail Information --> []

0020 6 2> Version of Carton Reorganization (P4620) --> []

Test Script Description: WH Put Away by Item (P4617)

RFgen Input Requirements

Before you begin testing, ensure, for the combination of branch/plant(s) and item(s) you will be testing, that the following is setup in EnterpriseOne or PeopleSoft World.

- a. Branch/Plant
- b. Purchase Order
- c. Item Number
- d. Location

JD Edwards Processing Option Settings

Enter the Processing Option values, which correspond, to the version you selected for testing.

JDE Version: ZJDE0001_____

Tab	Processing Option Description	Value
Display	<ol style="list-style-type: none"> a. Program Mode b. Phase Control Code c. Default Suggestion Status d. Shipping Location 	
Move Tags	<ol style="list-style-type: none"> a. DREAM Writer version of the move tags to be used for the printer overrides 	

Execution Procedures

ID	Test Case	Expected Result	Pass	Fail
1	Type in a valid Branch/Plant _____ Press the ENTER key	RFGEN will validate and accept the branch/plant entered		
2	Type in a valid Item# _____ Press the ENTER key	RFGEN will validate and accept the item entered; and display the item description, purchase order number, documented type, suggested location, put away quantity, and line number		
3	For confirmation, type in a valid Item# ____ Press the ENTER key	RFGEN will validate and accept the item entered		
4	For confirmation, type in a valid Qty ____ Press the ENTER key	RFGEN will validate and accept the quantity entered		
5	For confirmation, type in a valid Locn____ Press the ENTER key	RFGEN will validate and accept the location entered		
6	Type in an invalid Branch/Plant _____ Press the ENTER key	RFGEN will validate the branch/plant entered and display an error message – the field will continue to error out until corrected		
7	Type in an invalid Item# _____ Press the ENTER key	RFGEN will validate and display an error message – the field will continue to error out until corrected		
8	For confirmation, type in an invalid Item# _____ Press the ENTER key	RFGEN will validate and display an error message – the field will continue to error out until corrected		
9	For confirmation, type in and invalid Qty _____ Press the ENTER key	RFGEN will validate and display an error message – the field will continue to error out until corrected		
10	For confirmation, type in and invalid Locn _____ Press the ENTER key	RFGEN will validate and display an error message – the field will continue to error out until corrected		
11	Press the “F1” key with the cursor in the branch/plant field	RFGEN will display a list of branch/plants		
12	Press the “F1” key with the cursor in the branch/plant field to select and return a branch/plant	RFGEN will display a list of branch/plants and when selected, the branch/plant will be returned		
13	Press the “F1” key with the cursor in the Item# field	RFGEN will display a list of item numbers		

14	Press the "F1" key with the cursor in the Item# field to select and return an item number	RFGEN will display a list of item numbers and when selected, the item number will be returned		
15	If the Program Mode processing option is set to "1"	RFGEN will perform put away confirmation		
16	If the Phase Control Code processing option is set to "2"	RFGEN will perform two-phase put away confirmation		
17	If the Default Suggestion Status processing option is set to "340" (suggestions printed)	RFGEN will perform put away confirmation		
18	If the Shipping Location processing option is set to "1"	RFGEN will allow location override during put away confirmation		
19	If the "DREAM Writer version of the move tags to be used for the printer overrides" processing options is activated (contains a version)	RFGEN will retrieve (from processing option) and use the version during put away confirmation		
20	At the RFGEN "Enter to Accept Prompt" the transaction is added to EnterpriseOne	Confirm the Put Away by Item Confirmation results		

Overall Test Case Results

Pass/Fail	
Tester/Date	
RE-Tester/Date	

Actual Results	
-----------------------	--

Comments	
-----------------	--