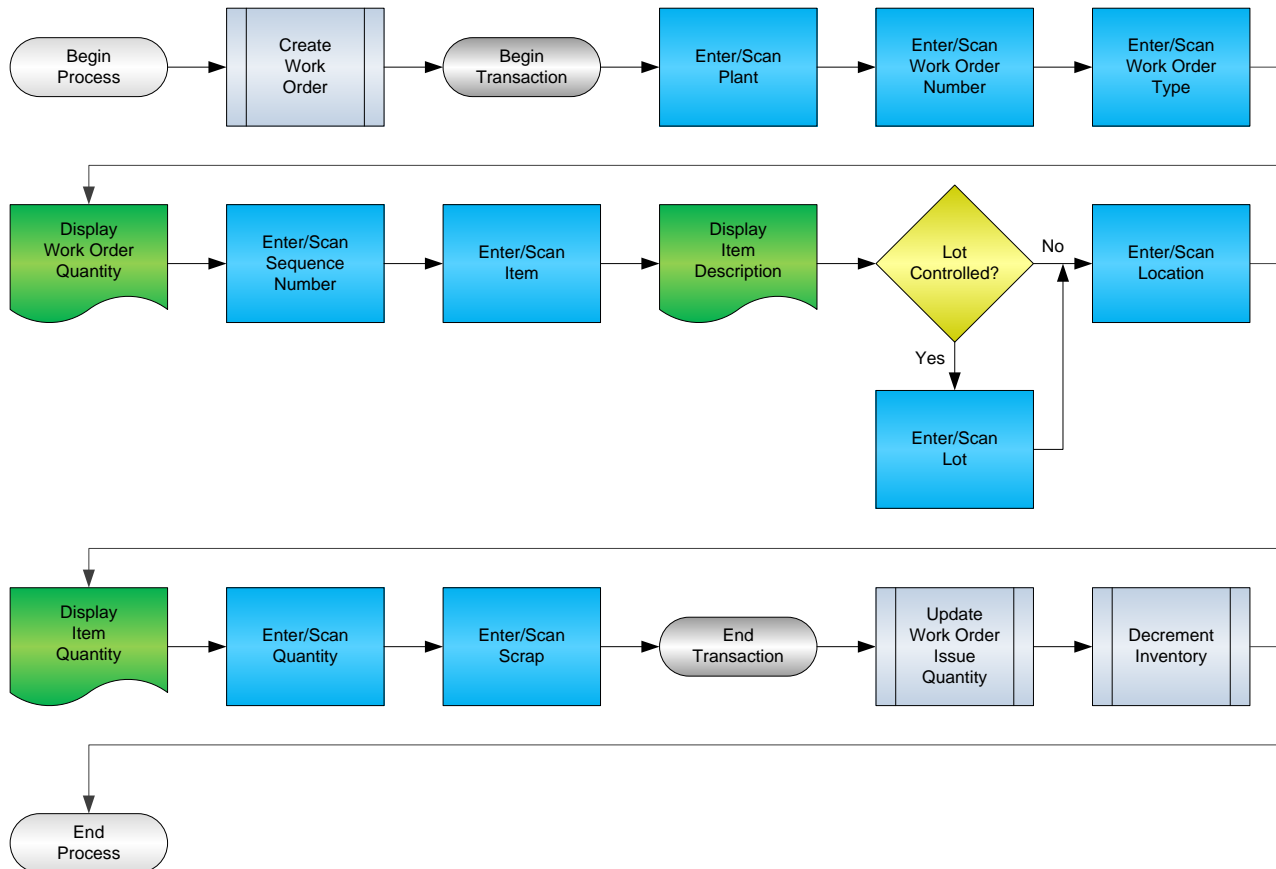


Work Order Component Issue



RFgen Software

1101 Investment Boulevard, Suite 250
El Dorado Hills, CA 95762
888-426-3472

License Agreement

All information contained in this document is the intellectual property of RFgen Software, a division of the DataMAX Software Group, Inc. This document may not be published, nor used without the prior written consent of RFgen Software. Use of the RFgen Software Open Source code is at all times subject to the DataMAX Software Group Open Source Licensing Agreement, which must be accepted at the time the source code is installed on your computer system. For your convenience, a text copy of the DataMAX Software Group Open Source Licensing Agreement is also loaded (and may be printed from) your RFgen-based system.

Requirements

- RFgen Version 5.0 or later
- RFgen JD Edwards Integration Suite

Table of Contents

WORK ORDER COMPONENT ISSUE	1
FWOCI0100 – COMPONENT ISSUE	3
✓ VALIDATIONS	4
✓ EDITS	4
⇄ FUNCTION KEYS	4
CONSIDERATIONS	5
ENTERPRISEONE PROGRAMS – REFERENCE	6
WORK ORDER ISSUE:P3111.....	6
ENTERPRISEONE CARDEX: P4111	6
AFFECTED RFGEN FORMS AND TRANSACTION MACROS	7
SETUP AN RFGEN MENU	7
RFGEN INPUT REQUIREMENTS	10
JD EDWARDS PROCESSING OPTION SETTINGS.....	10
EXECUTION PROCEDURES	11
OVERALL TEST CASE RESULTS	12

FWOCI0100 – Component Issue

The screenshot shows a mobile application interface for 'Work Order Inventory Issues'. The screen is dark blue with white text and input fields. The title 'Work Order Inventory Issues' is at the top. Below it, there are several input fields and labels: 'Plant' with 'M30', 'WO#' with '451418', 'Type' with 'WO', 'Qty Open: 9 EA' in yellow, 'Seq.#' with '40', 'Item#' with '2014', 'Brake Kit' in yellow, 'Locn' with '.', 'Component Qty: 10 EA' in yellow, and 'Qty' with '1' and 'Scrap' with '0'. At the bottom, it says 'Enter to Accept'.

This transaction issues material from a Work Order and decreases inventory for the material that has been issued.

The following conditions apply to the RFgen implementation for the Work Order Component Issue transaction within the EnterpriseOne environment.

Note: any of these parameters may be easily adjusted to meet the unique requirements of your company.

✓ Validations

Prompt	Table	Field
Plant	F41001	CIMCU
Work Order Number	F4801	WADOCO
Item Number	F3111	WMCPIL
Quantity	F3111	WMUORG
Location	F41021	LILOCN
Lot	F4108	IOLOTN

✓ Edits

Condition	Table
Default Branch Plant	F40095
Quantity entered <=0	NA

↔ Function Keys

Key	Function
F1	Search Data for Current Field
F2	Refresh the Current Screen Display
F3	
F4	Exits Transaction

Considerations

1. What EnterpriseOne version is used to process the Component Issues transaction?
2. What processing options are set to process Component Issues?
3. Does Branch default based on user?
4. Are negative quantities allowed?

EnterpriseOne Programs – Reference

Application Name(s)	Code	Table
Work Order Issue	P3111	F3111
Item Ledger (Cardex)	P4111	F4111

Work Order Issue:P3111

OK Del... Can... New... Dis... Abo...

Links Copy... OLE... Internet

Order Number: 199 WWO Branch/Plant: M30
 Touring Bike, Red Requested: 8/23/2005
 Item Number: 220 Touring Bike, Red

Component Item Number	Description	Order Quantity	Issued Quantity	UM	Secondary Qty Ordered	Secondary Issued
2011	Chain, Std	100	100	EA		
2022	Pedal, Right	100		EA		

EnterpriseOne Cardex: P4111

Select Find Close Seg... New... Dis... Abo...

Links Detail OLE... Internet

Item Number: 2011 Chain, Std
 Branch/Plant: M30
 Location: * Transaction Date: * - *
 Lot/Serial: * Document Type: *
 Quantity On Hand: 902 EA Value: 4,961.00
 Secondary On Hand: EA

Document Number	Doc Type	Doc Co	Transaction Date	Branch/Plant	Quantity	Trans UoM	Secondary Transaction Qty
199	IM	00200	8/23/2005	M30	100	EA	

How JD Edwards® Processing Option affects RFgen

This documentation explains which of the JDE Processing Options are used by RFgen and how the red highlighted Proc.Options effect the RFgen script.

Affected RFgen Forms and Transaction Macros

Description	Form Name	Transaction Macro Name
WO - Component Issue	FWOCI0100	TWOCI0100

Setup an RFgen Menu

To implement an RFgen Form using JDE Processing Options in an RFgen Menu the JDE Version needs to be specified.
Enter the Form name, followed by a Space. Enter “-Vers=” and the JDE Version.

Form/Menu	Description to Display
FWOCI0100 -Vers=ZJDE0001	3-Component Issue

Processing Options: P31113 Work Order Inventory Issues

---- <-- Edits -->

0001 1 1> **Document Type** --> [IM]

RFgen retrieves the Document Type from JDE Processing Option.

0002 1 2> Work Order Status Code --> [45]

0003 1 3> Material Status Code --> []

0004 1 4> **Work Order Status Code Limit** --> [96]

RFgen uses this value to filter on Work Order Status (WASRST)

0005 1 5> Negative Quantity on Hand --> []

0006 1 6> Item Sales History --> []

0007 1 8> Lot Hold Code #1 --> []

0008 1 9> Lot Hold Code #2 --> []

0009 1 10> Lot Hold Code #3 --> []

0010 1 11> Lot Hold Code #4 --> []

0011 1 12> Lot Hold Code #5 --> []

0012 1 13> Unplanned Issues --> []

0013 1 14> Purchase Order Document Type --> []

---- <-- Display -->

0014 2 1> Issue Type Code --> []

0015 2 2> Lot Number --> []

0016 2 3> Issue Material For --> []

0017 2 4> Apply Shrink to Issue Quantity --> []

0018 2 5> Apply Yield to Issue Quantity --> []

0019 2 6> Select All Lines for Issue on Entry --> []

0020 2 7> Display Only Open Lines --> []

---- <-- Versions -->

0021 3 1> Shortage Maintenance (P3118) --> []

0022 3 2> Open Purchase Orders (P3160W) --> []

0023 3 3> PO Receipts (P4312) --> []

0024 3 4> Movement and Disposition (P43250) --> []

---- <-- Equipment -->

0025 4 1> Work Order Number --> [W]

---- <-- Interop -->

0026 5 1> Inventory Issue Transaction Type --> [809]

0027 5 2> Work Order Transaction Type --> [810]

0028 5 3> Work Order Header Before Image --> [2]

Basic Test Script

1. Record quantities on hand from the Item Ledger for the Branch Plants, Item Numbers and their associated lots and locations for the item to be processed.
2. Issue Components from that work order then review the Work Order Entry program and verify that the item issued reflects the correct quantity.
3. Review the Item Ledger for the proper document types, transaction records, and that the quantity on hand updated to the correct amounts on the processed transactions.

Test Script Description: WO Component Issues (P31113)

RFgen Input Requirements

Before you begin testing, ensure, for the combination of branch/plant(s) and item(s) you will be testing, that the following is setup in EnterpriseOne or PeopleSoft World.

- a. Item
- b. Branch/Plant
- c. Quantity
- d. Location

JD Edwards Processing Option Settings

Enter the Processing Option values, which correspond, to the version you selected for testing.

JDE Version: ZJDE0001_____

Tab	Processing Option Description	Value
Edits	<ol style="list-style-type: none"> a. Document Type b. Work Order Status Code Limit 	

Execution Procedures

ID	Test Case	Expected Result	Pass	Fail
1	Type in a valid Branch/Plant _____ Press the ENTER key	RFGEN will validate and accept the branch/plant entered.		
2	Type in a valid WO# _____ Press the ENTER key	RFGEN will validate and accept the work order number entered.		
3	Type in a valid Type _____ Press the ENTER key	RFGEN will validate and accept the document type entered.		
4	Type in a valid Item# _____ Press the ENTER key	RFGEN will validate and accept the item number entered.		
5	Type in a valid Locn _____ Press the ENTER key	RFGEN will validate and accept the location entered.		
6	Type in a valid Qty _____ Press the ENTER key	RFGEN will validate and accept the quantity entered		
7	Type in a valid Scrap Qty _____ Press the ENTER key	RFGEN will validate and accept the scrap quantity entered		
8	Type in an invalid Branch/Plant _____ Press the ENTER key	RFGEN will validate the branch/plant entered and display an error message – the field will continue to error out until corrected		
9	Type in an invalid WO# _____ Press the ENTER key	RFGEN will validate and display an error message – the field will continue to error out until corrected		
10	Type in an invalid Type _____ Press the ENTER key	RFGEN will validate and display an error message – the field will continue to error out until corrected		
11	Type in an invalid Item# _____ Press the ENTER key	RFGEN will validate and display an error message – the field will continue to error out until corrected		
12	Type in an invalid Locn _____ Press the ENTER key	RFGEN will validate and display an error message – the field will continue to error out until corrected		
13	Type in an invalid Qty _____ Press the ENTER key	RFGEN will validate and display an error message – the field will continue to error out until corrected		
14	Type in an invalid Scrap Qty _____ Press the ENTER key	RFGEN will validate and display an error message – the field will continue to error out until corrected		

15	Press the "F1" key with the cursor in the branch/plant field	RFGEN will display a list of branch/plants		
16	Press the "F1" key with the cursor in the branch/plant field to select and return a branch/plant	RFGEN will display a list of branch/plants and when selected, the branch/plant will be returned		
17	Press the "F1" key with the cursor in the WO# field	RFGEN will display a list of work order numbers		
18	Press the "F1" key with the cursor in the WO# field to select and return a work order number	RFGEN will display a list of work order numbers and when selected, the work order number will be returned		
19	Press the "F1" key with the cursor in the Type field	RFGEN will display a list of document types		
20	Press the "F1" key with the cursor in the Type field to select and return a document type	RFGEN will display a list of document types and when selected, the document type will be returned		
21	Press the "F1" key with the cursor in the Item# field	RFGEN will display a list of item numbers		
22	Press the "F1" key with the cursor in the Item# field to select and return an item number	RFGEN will display a list of item numbers and when selected, the item number will be returned		
23	Press the "F1" key with the cursor in the Locn field	RFGEN will display a list of locations		
24	Press the "F1" key with the cursor in the Locn field to select and return a location	RFGEN will display a list of locations and when selected, the location will be returned		
25	If the Document Type processing option is activated	RFGEN will retrieve the document type		
26	If the Work Order Status Limit processing option is activated	RFGEN will validate the status and use the value to filter on work order status		
27	At the RFGEN "Enter to Accept Prompt" the transaction is added to EnterpriseOne	Confirm the Work Order Component Issues results		

Overall Test Case Results

Pass/Fail	
Tester/Date	

RE-Tester/Date	
----------------	--

Actual Results	
----------------	--

Comments	
----------	--