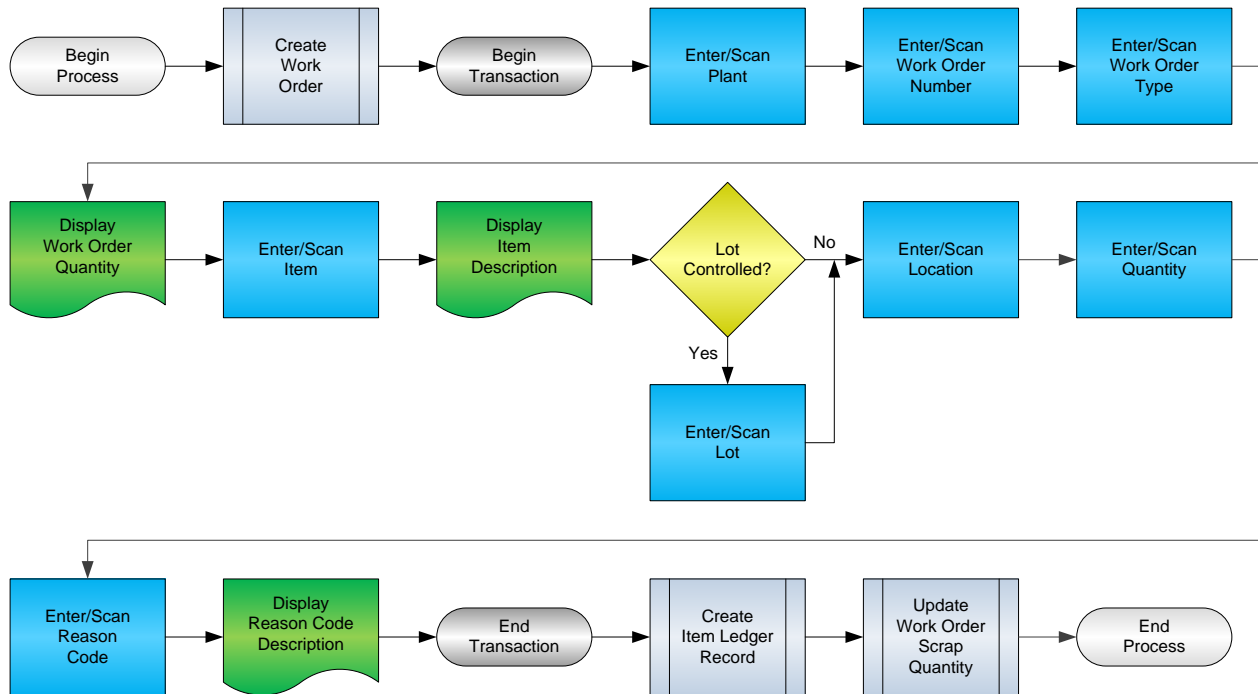


Work Order Component Scrap



RFgen Software
1101 Investment Boulevard, Suite 250
El Dorado Hills, CA 95762
888-426-3472

License Agreement

All information contained in this document is the intellectual property of RFgen Software, a division of the DataMAX Software Group, Inc. This document may not be published, nor used without the prior written consent of RFgen Software. Use of the RFgen Software Open Source code is at all times subject to the DataMAX Software Group Open Source Licensing Agreement, which must be accepted at the time the source code is installed on your computer system. For your convenience, a text copy of the DataMAX Software Group Open Source Licensing Agreement is also loaded (and may be printed from) your RFgen-based system.

Requirements

- RFgen Version 5.0 or later
- RFgen JD Edwards Integration Suite

Table of Contents

WORK ORDER COMPONENT SCRAP.....	1
FWOSC0100 – COMPONENT SCRAP	3
✓ VALIDATIONS	4
✓ EDITS	4
⇨ FUNCTION KEYS	4
CONSIDERATIONS	5
ENTERPRISEONE PROGRAMS – REFERENCE	6
ENTERPRISEONE WORK ORDER ISSUE: P31116.....	6
ENTERPRISEONE CARDEX: P4111	6
AFFECTED RFGEN FORMS AND TRANSACTION MACROS	7
SETUP AN RFGEN MENU	7
BASIC TEST SCRIPT	9
RFGEN INPUT REQUIREMENTS	10
JD EDWARDS PROCESSING OPTION SETTINGS.....	10
EXECUTION PROCEDURES	11
OVERALL TEST CASE RESULTS	13

FWOSC0100 – Component Scrap

The screenshot shows a mobile application interface for 'Component Scrap Transactions'. The screen is dark blue with white text and input fields. The fields are as follows:

Plant	M30
WO#	451127
Type	WO
	Qty Open: 0 PC
Item#	4201
	Vitamin A
Lot#	20687
Loch	. .
Qty	1
Rsn	EXP Expired Date

Enter to Accept

This transaction decreases inventory and identifies it as material that has been scrapped for a work order.

The following conditions apply to the RFgen implementation for the Work Component Scrap transaction within the EnterpriseOne environment.

Note: any of these parameters may be easily adjusted to meet the unique requirements of your company.

✓ Validations

Prompt	Table	Field
Plant	F41001	CIMCU
Work Order Number	F4801	WADOCO
Component Item Number	F3111	WMCPIL
Location	F4100	LMLOCN
Lot	F4108	IOLOTN
Quantity	F3111	WMUORG

✓ Edits

Condition	Table
Default Branch Plant	F40095
Quantity entered <=0	NA

↔ Function Keys

Key	Function
F1	Search Data for Current Field
F2	Refresh the Current Screen Display
F3	
F4	Exits Transaction

Considerations

1. What EnterpriseOne version is used to process the Component Scrap transaction?
2. What processing options are set to process Component Scrap?
3. Does Branch default based on user?
4. Will negative quantities be allowed?

EnterpriseOne Programs – Reference

Application Name(s)	Code	Table
Work Order Issue	P31116	F3111
Item Ledger (Cardex)	P4111	F4111

EnterpriseOne Work Order Issue: P31116

Select Find Close Seg... New... Dis... Abo

Links ▼ Scrap ... OLE ... Internet

Revision by Order Branch/Plant: M30

Requested: 8/23/2005

Item Number: 2022 Pedal, Right

Order Number/Type: W/O

Order Number	Component 2nd Number	Item Description	Quantity Issued	Quantity Scrapped	UM	Quantity Ordered
199	2022	Pedal, Right			1 EA	100

EnterpriseOne Cardex: P4111

Select Find Close Seg... New... Dis... Abo

Links ▼ Detail OLE ... Internet

Item Number: 2022 Pedal, Right

Branch/Plant: M30

Location: * Transaction Date: * - *

Lot/Serial: * Document Type: *

Quantity On Hand: 100 EA Value: 1,050.00

Secondary On Hand: EA

Document Number	Doc Type	Doc Co	Transaction Date	Branch/Plant	Quantity	Trans UoM	Secondary Transaction Qty
199	IO	00200	8/24/2005	M30	1	EA	EA

How JD Edwards® Processing Option affects RFgen

This documentation explains which of the JDE Processing Options are used by RFgen and how the red highlighted Proc.Options effect the RFgen script.

Affected RFgen Forms and Transaction Macros

Description	Form Name	Transaction Macro Name
WO - Component Scrap	FWOCS0100	TWOCS0100

Setup an RFgen Menu

To implement an RFgen Form using JDE Processing Options in an RFgen Menu the JDE Version needs to be specified.
Enter the Form name, followed by a Space. Enter “-Vers=” and the JDE Version.

Form/Menu	Description to Display
FWOCS0100 -Vers=ZJDE0001	4-Component Scrap

Processing Options: P31116 Component Scrap

----- <-- **Process** -->

0001 1 2> Processing Mode --> [1]
0002 1 3> **Enter the Status Code beyond which Compo** --> [98]

RFgen uses this value to filter on Work Order Status (WASRST)

----- <-- **Defaults** -->

0003 2 2> Transaction Date --> [20051214]
0004 2 4> Reason Code --> [10]
0005 2 6> **Document Type** --> [IO]

RFgen retrieves the Document Type from JDE Processing Option.

----- <-- **SN Process** -->

0006 3 2> Document Type --> [\$B]

Basic Test Script

1. Record quantities on hand from the Item Ledger for the Branch Plants, Item Numbers and their associated lots and locations.
2. Scrap Components from that work order then review the Work Order Entry program and verify that the item scrapped reflects the correct quantity.
3. Review the Item Ledger for the proper document types, transaction records, and that the quantity on hand updated to the correct amounts the processed transactions.

Test Script Description: WO Component Scrap (P31116)

RFgen Input Requirements

Before you begin testing, ensure, for the combination of branch/plant(s) and item(s) you will be testing, that the following is setup in EnterpriseOne or PeopleSoft World.

- a. Item
- b. Branch/Plant
- c. Quantity
- d. Location

JD Edwards Processing Option Settings

Enter the Processing Option values, which correspond, to the version you selected for testing.

JDE Version: ZJDE0001_____

Tab	Processing Option Description	Value
Process	a. Enter the Status Code beyond which Component Scrap cannot be made	
Defaults	a. Document Type	

Execution Procedures

ID	Test Case	Expected Result	Pass	Fail
1	Type in a valid Branch/Plant _____ Press the ENTER key	RFGEN will validate and accept the branch/plant entered.		
2	Type in a valid WO# _____ Press the ENTER key	RFGEN will validate and accept the work order number entered.		
3	Type in a valid Type _____ Press the ENTER key	RFGEN will validate and accept the document type entered.		
4	Type in a valid Item# _____ Press the ENTER key	RFGEN will validate and accept the item number entered.		
5	Type in a valid Locn _____ Press the ENTER key	RFGEN will validate and accept the location entered.		
6	Type in a valid Qty _____ Press the ENTER key	RFGEN will validate and accept the quantity entered		
7	Type in a valid Scrap Qty _____ Press the ENTER key	RFGEN will validate and accept the scrap quantity entered		
8	Type in a valid Rsn (reason code) _____ Press the ENTER key	RFGEN will validate and accept the reason code entered		
9	Type in an invalid Branch/Plant _____ Press the ENTER key	RFGEN will validate the branch/plant entered and display an error message – the field will continue to error out until corrected		
10	Type in an invalid WO# _____ Press the ENTER key	RFGEN will validate and display an error message – the field will continue to error out until corrected		
11	Type in an invalid Type _____ Press the ENTER key	RFGEN will validate and display an error message – the field will continue to error out until corrected		
12	Type in an invalid Item# _____ Press the ENTER key	RFGEN will validate and display an error message – the field will continue to error out until corrected		
13	Type in an invalid Locn _____ Press the ENTER key	RFGEN will validate and display an error message – the field will continue to error out until corrected		
14	Type in an invalid Qty _____ Press the ENTER key	RFGEN will validate and display an error message – the field will continue to error out until corrected		
15	Type in an invalid Scrap Qty _____	RFGEN will validate and display an error message – the field will		

	Press the ENTER key	continue to error out until corrected		
16	Type in an invalid Rsn (reason code)____ Press the ENTER key	RFGEN will validate and display an error message – the field will continue to error out until corrected		
17	Press the “F1” key with the cursor in the branch/plant field	RFGEN will display a list of branch/plants		
18	Press the “F1” key with the cursor in the branch/plant field to select and return a branch/plant	RFGEN will display a list of branch/plants and when selected, the branch/plant will be returned		
19	Press the “F1” key with the cursor in the WO# field	RFGEN will display a list of work order numbers		
20	Press the “F1” key with the cursor in the WO# field to select and return a work order number	RFGEN will display a list of work order numbers and when selected, the work order number will be returned		
21	Press the “F1” key with the cursor in the Type field	RFGEN will display a list of document types		
22	Press the “F1” key with the cursor in the Type field to select and return a document type	RFGEN will display a list of document types and when selected, the document type will be returned		
23	Press the “F1” key with the cursor in the Item# field	RFGEN will display a list of item numbers		
24	Press the “F1” key with the cursor in the Item# field to select and return an item number	RFGEN will display a list of item numbers and when selected, the item number will be returned		
25	Press the “F1” key with the cursor in the Locn field	RFGEN will display a list of locations		
26	Press the “F1” key with the cursor in the Locn field to select and return a location	RFGEN will display a list of locations and when selected, the location will be returned		
27	Press the “F1” key with the cursor in the Rsn (reason code) field	RFGEN will display a list of reason codes		
28	Press the “F1” key with the cursor in the Rsn (reason code) field to select and return a reason code	RFGEN will display a list of reason codes and when selected, the reason code will be returned		
29	If the Work Order Status Limit processing option is activated	RFGEN will validate the status and use the value to filter on work order status		
30	If the “Enter the Status Code beyond which Component Scrap cannot be made” processing option is valid	RFGEN will validate the status and allow the component scrap procedure to process		

31	If the "Enter the Status Code beyond which Component Scrap cannot be made" processing option is invalid	RFGEN will validate the status, display an error message, and not allow the component scrap procedure to process		
32	If the "Enter the Status Code beyond which Component Scrap cannot be made" processing option is set to "blank"	RFGEN will not restrict the component scrap process		
33	If the Document Type processing option is activated	RFGEN will retrieve the document type		
34	At the RFGEN "Enter to Accept Prompt" the transaction is added to EnterpriseOne	Confirm the Work Order Component Scrap results		

Overall Test Case Results

Pass/Fail	
Tester/Date	
RE-Tester/Date	

Actual Results	
-----------------------	--

Comments	
-----------------	--