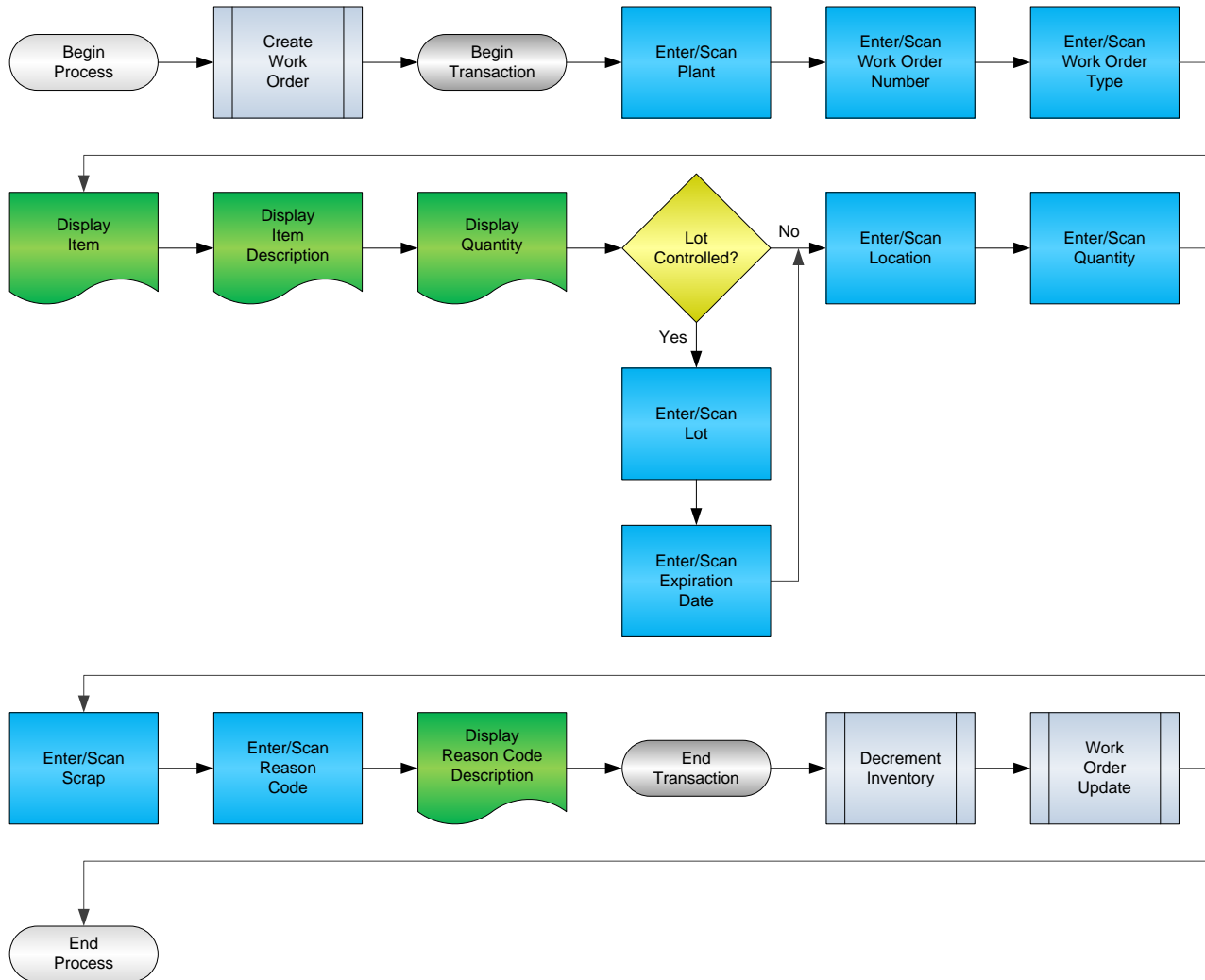


Work Order Completion



RFgen Software

1101 Investment Boulevard, Suite 250
El Dorado Hills, CA 95762
888-426-3472

License Agreement

All information contained in this document is the intellectual property of RFgen Software, a division of the DataMAX Software Group, Inc. This document may not be published, nor used without the prior written consent of RFgen Software. Use of the RFgen Software Open Source code is at all times subject to the DataMAX Software Group Open Source Licensing Agreement, which must be accepted at the time the source code is installed on your computer system. For your convenience, a text copy of the DataMAX Software Group Open Source Licensing Agreement is also loaded (and may be printed from) your RFgen-based system.

Requirements

- RFgen Version 5.0 or later
- RFgen JD Edwards Integration Suite

Table of Contents

WORK ORDER COMPLETION	1
FWOOC0100 – WORK ORDER COMPLETIONS	3
✓ VALIDATIONS	4
✓ EDITS	4
⇄ FUNCTION KEYS	4
CONSIDERATIONS	5
ENTERPRISEONE PROGRAMS – REFERENCE	6
SHOP FLOOR WORKBENCH: P31225.....	6
ENTERPRISEONE CARDEX: P4111	6
AFFECTED RFGEN FORMS AND TRANSACTION MACROS	7
SETUP AN RFGEN MENU	7
BASIC TEST SCRIPT	10
RFGEN INPUT REQUIREMENTS	11
JD EDWARDS PROCESSING OPTION SETTINGS.....	11
EXECUTION PROCEDURES	12
OVERALL TEST CASE RESULTS	13

FWOOC0100 – Work Order Completions

The screenshot shows a mobile application interface for 'Work Order Completion - Parti'. The screen displays various fields for data entry, including Plant (M30), WO# (451098), Type (WO), Lot# (20602), ExpDt (12/31/2041), Qty (1), Scrap (0), and Rsn (EXP). The item name 'Vitamin A' and 'Qty Open: 0 GM' are also visible. The interface is designed for a mobile device, with a white border and a home button at the bottom.

Plant	M30		
WO#	451098	Type	WO
	4201		
	Vitamin A		
	Qty Open: 0 GM		
Lot#	20602		
ExpDt	12/31/2041		
Loch	.		
Qty	1		
Scrap	0		
Rsn	EXP	Expired Date	

Enter to Accept

This transaction completes the work order by increasing inventory for the manufactured items and updating the status of the work order to identify it as being complete.

The following conditions apply to the RFgen implementation for the Work Component Completion transaction within the EnterpriseOne environment.

Note: any of these parameters may be easily adjusted to meet the unique requirements of your company.

✓ Validations

Prompt	Table	Field
Plant	F41001	CIMCU
Work Order Number	F4801	WADOCO
Location	F4100	LMLOCN
Lot	F4108	IOLOTN
Quantity	F3111	WMUORG

✓ Edits

Condition	Table
Default Branch Plant	F40095
Quantity entered <=0	NA

↔ Function Keys

Key	Function
F1	Search Data for Current Field
F2	Refresh the Current Screen Display
F3	
F4	Exits Transaction

Considerations

1. What Enterprise One version is used to process the Work Order Issues transaction?
2. What processing options are set to process Work Order Issues?
3. Does Branch default based on user?
4. Are negative quantities allowed on the completion?

EnterpriseOne Programs – Reference

Application Name(s)	Code	Table
Work Order Completion	P31114	F4108, F3111
Item Ledger (Cardex)	P4111	F4111

Shop Floor Workbench: P31225

Select Find Close Seg... New... Dis... Abo

Links ▼ WO E...

Work Order Info | Additional Selection Criteria

Branch/Plant:

Item No.: Touring Bike, Red

Planner:

Customer:

Parent WO:

Status From: Status Thru: Search X-Ref:

WO Number	Or Ty	Description	WO Status	Item Number	Branch/Plant	Quantity Open	UM	Sec Qty
199	WO	Touring Bike, Red	95	220	M30	0	EA	

EnterpriseOne Cardex: P4111

Select Find Close Seg... New... Dis... Abo

Links ▼ Detail

Item Number: Touring Bike, Red

Branch/Plant:

Location: Transaction Date: -

Lot/Serial: Document Type:

Quantity On Hand: EA Value:

Secondary On Hand: EA

Document Number	Doc Type	Doc Co	Transaction Date	Branch/Plant	Quantity	Trans UoM	Secondary Transaction Qty
199	IC	00200	8/25/2005	M30	2000	EA	

How JD Edwards® Processing Option affects RFgen

This documentation explains which of the JDE Processing Options are used by RFgen and how the red highlighted Proc.Options effect the RFgen script.

Affected RFgen Forms and Transaction Macros

Description	Form Name	Transaction Macro Name
WO - Completions	FWOOC0100	TWOOCM0100

Setup an RFgen Menu

To implement an RFgen Form using JDE Processing Options in an RFgen Menu the JDE Version needs to be specified.
Enter the Form name, followed by a Space. Enter “-Vers=” and the JDE Version.

Form/Menu	Description to Display
FWOOC0100 -Vers=ZJDE0001	6-Completions - Partial

Processing Options: P31114 Work Order Completions

----- <-- Defaults -->

0001 1 1> Inventory Completion Document Type --> [IC]
0002 1 2> Inventory Scrap Document Type --> [IS]

----- <-- Edits -->

0003 2 1> Backflush --> []
0004 2 2> Receipt Routing --> []
0005 2 3> Override Lot Numbers --> [1]
0006 2 4> Negative Quantity on Hand --> []
0007 2 5> Enter a '1' to initiate WIP Revaluation --> []

----- <-- WO Status -->

0008 3 1> Partial Work Order Status Code --> [45]
0009 3 2> Completed Status Code --> [95]
0010 3 3> Completion Threshold --> [0]
0011 3 4> Work Order Status Limit --> [96]

RFgen retrieves the value to filter the max for WO Status WASRST.

----- <-- Lot Hold C -->

0012 4 1> Lot Hold Code # 1 --> []
0013 4 2> Lot Hold Code # 2 --> []
0014 4 3> Lot Hold Code # 3 --> []
0015 4 4> Lot Hold Code # 4 --> []
0016 4 5> Lot Hold Code # 5 --> []

----- <-- Sales Order -->

0017 5 1> Work Order Lot and Location Defaults --> []
0018 5 2> Sales Order Lot and Location --> []
0019 5 3> Update Sales Order Next Status --> []
0020 5 4> Override Next Status --> []
0021 5 5> Display Back Order Release Form --> []

----- <-- Process Mf -->

0022 6 1> Allow Unplanned Co/By Products --> [1]
0023 6 2> Issues Ingredients to Co/By Products --> []

----- <-- Serial Num -->

0024 7 1> Allow Duplicate Lot Serial Numbers --> []
0025 7 2> Document Type --> []

----- <-- Warehouse -->

0026 8 1> Putaway Requests --> []
0027 8 2> Entry of license plate numbers --> []

----- <-- Cross Dock -->

0028 9 1> Cross Docking --> []

```
0029 9 2> Pick Request for Planned Cross Docking      --> [ ]
0030 9 3> Override Next Status for Sales Orders      --> [ ]
0031 9 4> From Sales Order Status                    --> [ ]
0032 9 5> Thru Sales Order Status                    --> [ ]

---- <-- Versions -->
0033 10 1> Work Order Entry (P48013)                  --> [ ]
0034 10 2> Work Order Issues Version (P31113)        --> [ ]
0035 10 3> Test Results Revisions (P3711)           --> [ ]
0036 10 4> WIP Revaluation (R30837)                  --> [ ]
0037 10 5> Pick Request Version (R46171)             --> [ ]
0038 10 6> Location Selection Driver Version (R4617) --> [ ]
0039 10 7> Back Order Release Version (P42117)       --> [ ]
0040 10 8> Shortage Workbench (P3118)                 --> [ ]

---- <-- Interop -->
0041 11 1> Transaction Type                           --> [ ]
0042 11 2> Call Outbound Subsystem                   --> [ ]
0043 11 3> Work Order Header Before Image            --> [ ]
```

Basic Test Script

1. Record quantities on hand from the Item Ledger for the Branch Plants, Item Numbers and their associated lots and locations that you will perform a Component Issue on.
2. Complete the Work Order and then review the Work Order Entry program and verify that it reflects the correct status as closed.
3. Review the Item Ledger for the proper document types, transaction records, and that the quantity on hand updated to the correct amounts on your valid transactions.

Test Script Description: Work Order Completions (P31114)

RFgen Input Requirements

Before you begin testing, ensure, for the combination of branch/plant(s) and item(s) you will be testing, that the following is setup in EnterpriseOne or PeopleSoft World.

- a. Item
- b. Branch/Plant
- c. Quantity
- d. Locations
- e. Work Order Number
- f. Work Order Type

JD Edwards Processing Option Settings

Enter the Processing Option values, which correspond, to the version you selected for testing.

JDE Version: ZJDE0001_____

Tab	Processing Option Description	Value
WO Status	a. Work Order Status Limit	

Execution Procedures

ID	Test Case	Expected Result	Pass	Fail
1	Type in a valid Branch/Plant _____ Press the ENTER key	RFGEN will validate and accept the branch/plant entered.		
2	Type in a valid WO# _____ Press the ENTER key	RFGEN will validate and accept the work order number entered.		
3	Type in a valid Type _____ Press the ENTER key	RFGEN will validate and accept the document type entered.		
4	Type in a valid Locn _____ Press the ENTER key	RFGEN will validate and accept the location entered.		
5	Type in a valid Qty _____ Press the ENTER key	RFGEN will validate and accept the quantity entered		
6	Type in a valid Scrap Qty _____ Press the ENTER key	RFGEN will validate and accept the scrap quantity entered		
7	Type in a valid Rsn (reason code) _____ Press the ENTER key	RFGEN will validate and accept the reason code entered		
8	Type in an invalid Branch/Plant _____ Press the ENTER key	RFGEN will validate the branch/plant entered and display an error message – the field will continue to error out until corrected		
9	Type in an invalid WO# _____ Press the ENTER key	RFGEN will validate and display an error message – the field will continue to error out until corrected		
10	Type in an invalid Type _____ Press the ENTER key	RFGEN will validate and display an error message – the field will continue to error out until corrected		
11	Type in an invalid Locn _____ Press the ENTER key	RFGEN will validate and display an error message – the field will continue to error out until corrected		
12	Type in an invalid Qty _____ Press the ENTER key	RFGEN will validate and display an error message – the field will continue to error out until corrected		
13	Type in an invalid Scrap Qty _____ Press the ENTER key	RFGEN will validate and display an error message – the field will continue to error out until corrected		
14	Type in an invalid Rsn (reason code) _____ Press the ENTER key	RFGEN will validate and display an error message – the field will continue to error out until corrected		

15	Press the "F1" key with the cursor in the branch/plant field	RFGEN will display a list of branch/plants		
16	Press the "F1" key with the cursor in the branch/plant field to select and return a branch/plant	RFGEN will display a list of branch/plants and when selected, the branch/plant will be returned		
17	Press the "F1" key with the cursor in the WO# field	RFGEN will display a list of work order numbers		
18	Press the "F1" key with the cursor in the WO# field to select and return a work order number	RFGEN will display a list of work order numbers and when selected, the work order number will be returned		
19	Press the "F1" key with the cursor in the Type field	RFGEN will display a list of order types		
20	Press the "F1" key with the cursor in the Type field to select and return an order type	RFGEN will display a list of order types and when selected, the order type will be returned		
21	Press the "F1" key with the cursor in the Locn field	RFGEN will display a list of locations		
22	Press the "F1" key with the cursor in the Locn field to select and return a location	RFGEN will display a list of locations and when selected, the location will be returned		
23	Press the "F1" key with the cursor in the Rsn (reason code) field	RFGEN will display a list of reason codes		
24	Press the "F1" key with the cursor in the Rsn (reason code) field to select and return a reason code	RFGEN will display a list of reason codes and when selected, the reason code will be returned		
25	If the Work Order Status Limit processing option is activated and the status code is valid for completions	RFGEN will validate the status and allow the work order to process		
26	If the Work Order Status Limit processing option is activated and the status code is not valid for completions	RFGEN will validate the status, display an error message, and not allow the work order to process		
27	If the Work Order Status Limit processing option is set to "blanks"	RFGEN will process work orders at any status		
28	At the RFGEN "Enter to Accept Prompt" the transaction is added to EnterpriseOne	Confirm the Work Order Completion results		

Overall Test Case Results

Pass/Fail	
Tester/Date	
RE-Tester/Date	

Actual Results	
-----------------------	--

Comments	
-----------------	--