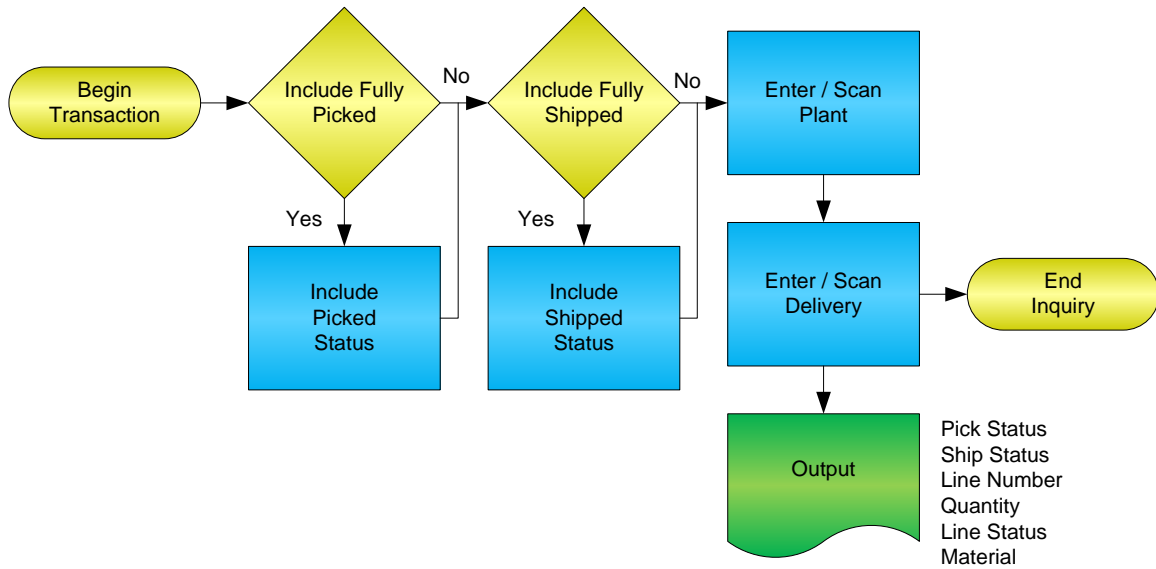


## Sales Order Inquiry by Delivery Document



**RFgen Software**  
1101 Investment Boulevard, Suite 250  
El Dorado Hills, CA 95762  
888-426-3472

## License Agreement

All information contained in this document is the intellectual property of RFgen Software, a division of the DataMAX Software Group, Inc. This document may not be published, nor used without the prior written consent of RFgen Software. Use of the RFgen Software Open Source code is at all times subject to the DataMAX Software Group Open Source Licensing Agreement, which must be accepted at the time the source code is installed on your computer system. For your convenience, a text copy of the DataMAX Software Group Open Source Licensing Agreement is also loaded (and may be printed from) your RFgen-based system.

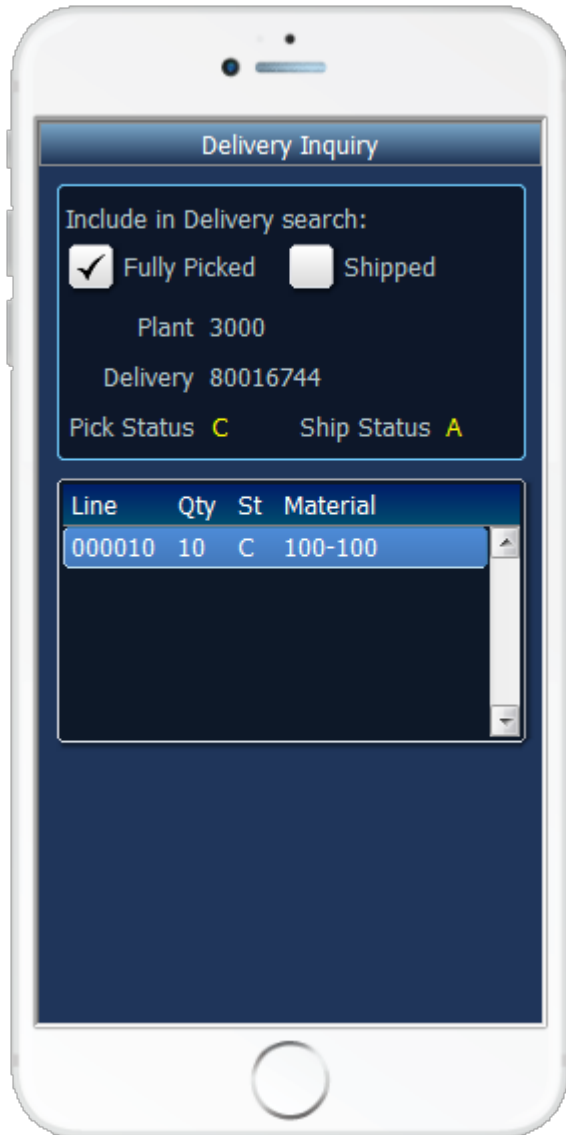
## Requirements

- RFgen Version 5.0 or later

## Table of Contents

SALES ORDER INQUIRY BY DELIVERY DOCUMENT .....	1
FSOQD0200 – SO INQUIRY BY DELIVERY DOCUMENT .....	3
✓ VALIDATIONS .....	4
⇨ FUNCTION KEYS .....	4
SAP PROGRAMS – REFERENCE .....	5
SAP DELIVERY DISPLAY: VL03N .....	5
RFGEN INPUT REQUIREMENTS .....	6
EXECUTION PROCEDURES .....	6
OVERALL TEST CASE RESULTS .....	7

## FSOQD0200 – SO Inquiry by Delivery Document



This transaction displays lines that are on the Delivery Document. The Fully Picked check box and the Shipped check box refer only to the search capability of the Delivery field.

The following conditions apply to the RFgen implementation of the SO Inquiry by Delivery within the SAP environment.

Note: any of these parameters may be easily adjusted to meet the unique requirements of your company.

### ✓ Validations

Prompt	Method of Validation
Plant	T001W table
Delivery Document	LIKPUK table

### ↔ Function Keys

Key	Function
F3	Exit
F4	Search Data for Current Field
F8	Submit value for the Current Screen Display

**SAP Programs – Reference**

**SAP Delivery Display: VL03N**

**Delivery 80007824 Display: Overview**

Outbound deliv.: 80007824      Document date: 11/12/2002  
 Ship-to party: 3010      Bush Distribution / 3000 North Avenue / Chicago IL 67980

Item overview    Picking    Loading    Shipment    Status overview    Goods m...

Picking date: 11/12/2002 00:00      OvrllPickStatus: A Not yet picked  
 Whse number: 300      Lean warehouse Ne...      OverallWMStatus: A WM Trnsf order reqd

Item	Material	PInt	SLoc	Delivery quantity	SU	Pick quantity	SU	Batch
10	M-12	3000	0001	1	PC	0	PC	

Batch split    Main items    All items

## Test Script Description: SO Inquiry by Delivery Document

### RFgen Input Requirements

Before you begin testing, ensure, for the combination of plant(s) and delivery documents you will be testing, that the following is setup in SAP.

- a. Plant
- b. Delivery Document

### Execution Procedures

ID	Test Case	Expected Result	Pass	Fail
1	Type in a valid Plant _____ Press the <b>ENTER</b> key	RFGEN will validate and accept the plant entered		
2	Type in a valid Delivery Document _____ Press the <b>ENTER</b> key	RFGEN will validate and accept the Delivery Document entered		
3	Type in an invalid Plant _____ Press the <b>ENTER</b> key	RFGEN will validate and display an error message – the field will continue to error out until corrected		
4	Type in an invalid Delivery Document _____ Press the <b>ENTER</b> key	RFGEN will validate and display an error message – the field will continue to error out until corrected		
5	Check and uncheck the “Include Fully Picked” checkbox	The results should adjust to reflect the correct statuses of the lines		
6	Check and uncheck the “Include Fully Shipped” checkbox	The results should adjust to reflect the correct statuses of the lines		
7	Press the “F4” key with the cursor in the Plant field	RFGEN will display a list of plants		
8	Press the “F4” key with the cursor in the Plant field to select and return a Plant	RFGEN will display a list of plants and when selected, the Plant will be returned		

9	Press the "F4" key with the cursor in the Delivery field	RFGEN will display a list of deliveries		
10	Press the "F4" key with the cursor in the Delivery field to select and return an Delivery Document	RFGEN will display a list of sales order numbers and when selected, the Delivery Document will be returned		
11	After reviewing the SO Inquiry by Delivery display	Confirm the SO Inquiry by Delivery results		

### Overall Test Case Results

<b>Pass/Fail</b>	
<b>Tester/Date</b>	
<b>RE-Tester/Date</b>	

<b>Actual Results</b>	
-----------------------	--

<b>Comments</b>	
-----------------	--