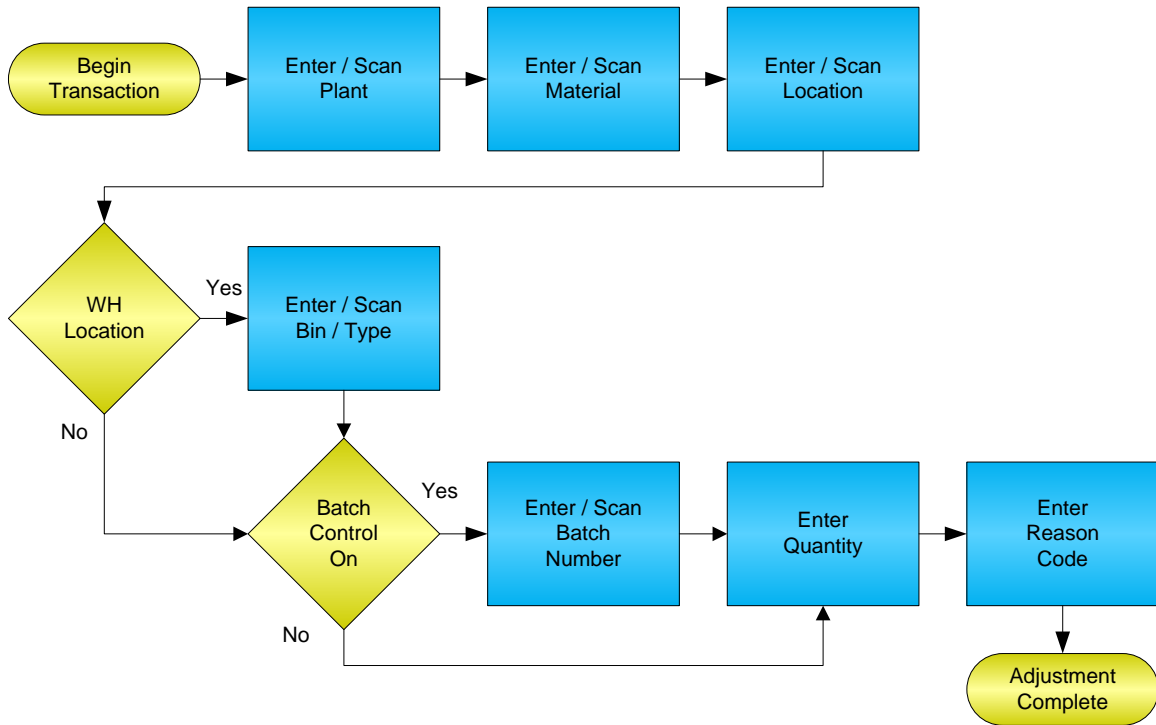


## Inventory Adjustment



**RFgen Software**  
1101 Investment Boulevard, Suite 250  
El Dorado Hills, CA 95762  
888-426-3472

## License Agreement

All information contained in this document is the intellectual property of RFgen Software, a division of the DataMAX Software Group, Inc. This document may not be published, nor used without the prior written consent of RFgen Software. Use of the RFgen Software Open Source code is at all times subject to the DataMAX Software Group Open Source Licensing Agreement, which must be accepted at the time the source code is installed on your computer system. For your convenience, a text copy of the DataMAX Software Group Open Source Licensing Agreement is also loaded (and may be printed from) your RFgen-based system.

## Requirements

- RFgen Version 5.0 or later

**Table of Contents**

INVENTORY ADJUSTMENT ..... 1

FIMIA0200 – INVENTORY ADJUSTMENT ..... 3

    ✓ VALIDATIONS ..... 4

    ✓ EDITS ..... 4

    ⇨ FUNCTION KEYS ..... 4

CONSIDERATIONS ..... 5

SAP PROGRAMS – REFERENCE ..... 6

SAP INVENTORY ADJUSTMENTS: MB1C ..... 6

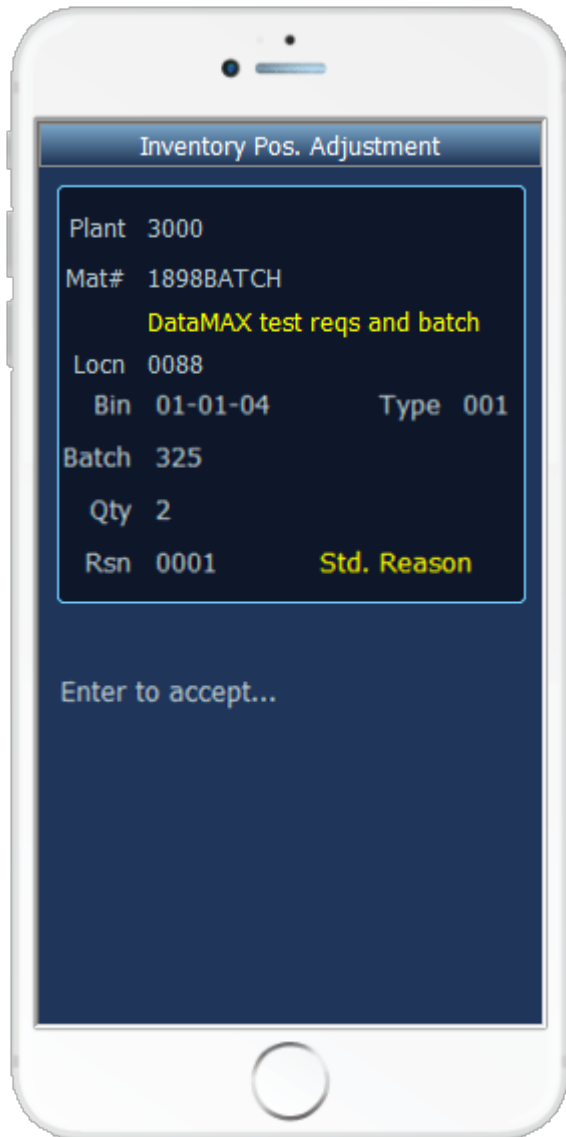
BASIC TEST SCRIPT ..... 7

RFGEN INPUT REQUIREMENTS ..... 8

EXECUTION PROCEDURES ..... 8

OVERALL TEST CASE RESULTS ..... 9

## FIMIA0200 – Inventory Adjustment



This mobile application increases or decreases inventory based on a menu selection. An Inventory Adjustment record is recorded and the results can be seen in the MMBE screen for the given material. This mobile application also supports warehouse locations.

The following conditions apply to the RFgen implementation for the Inventory Adjustment mobile application within the SAP environment.

Note: any of these parameters may be easily adjusted to meet the unique requirements of your company.

✓ **Validations**

| Prompt   | Method of Validation       |
|----------|----------------------------|
| Plant    | T001W                      |
| Material | BAPI_MATERIAL_GETLIST      |
| Batch    | BAPI_MATERIAL_GETBATCHES   |
| Location | BAPI_MATERIAL_GETLIST      |
| Bin      | LAGP                       |
| Bin Type | LAGP                       |
| Quantity | BAPI_MATERIAL_AVAILABILITY |
| Reason   | T157E<br>UDC 42/RC         |

✓ **Edits**

| Condition                                  | Special Circumstance |
|--|----------------------|
| Default Branch Plant                       | User defined         |
| Quantity not greater than Quantity on Hand |                      |
| Quantity entered <=0                       |                      |

↔ **Function Keys**

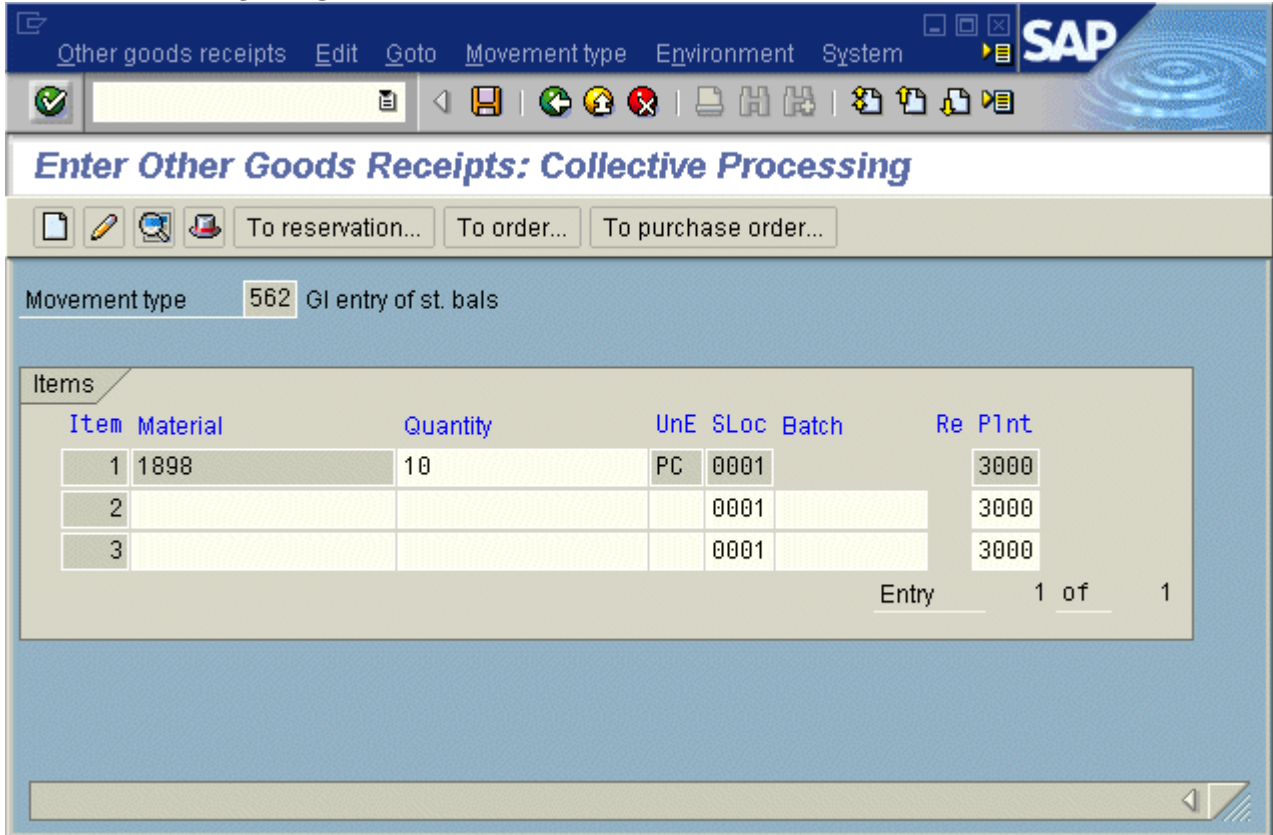
| Key | Function                      |
|-----|-------------------------------|
| F3  | Exit                          |
| F5  | Search Data for Current Field |

## Considerations

1. Do you want the Plant to default based on user?
2. Will you allow transactions on negative quantities to increase inventory?
3. Do you need limitations placed on the dollar amount of Inventory Adjustments?
4. Do you use lot control?

**SAP Programs – Reference**

**SAP Inventory Adjustments: MB1C**



## Setup an RFgen Menu

To implement an RFgen Form using SAP Movement Types in an RFgen Menu the movement type needs to be specified.

Enter the Form name, followed by a Space. Enter “-TYPE=” and the proper movement type.

| Form/Menu           | Description to Display |
|---------------------|------------------------|
| FIMIA0200 -TYPE=NEG | Negative Adjustment    |
| FIMIA0200 -TYPE=POS | Positive Adjustment    |

### Basic Test Script

1. Record quantities on hand from for the Plant, Material and their associated batches and locations that you will perform Inventory Adjustments on.
2. Create and document the following scenarios:
  - a. Adjust an amount within the quantity on hand for a material
  - b. Adjust a negative amount for a material. Based upon your specifications, if not allowed, a negative issue warning should appear. If negative adjustments are allowed, inventory should decrease.
  - c. Adjust a positive amount for a material.
  - d. Attempt to adjust on materials that are not set up in particular plants.
  - e. Attempt to adjust a material not set up in a particular location. A “Plant or Location error” should appear.
  - f. If your customization required an adjustment quantity threshold be placed on a material, attempt to adjust over the quantity amount authorized for a particular material. An “exceeding threshold limit” error should appear.
3. View the results using MMBE and see that the quantity on hand updated to the correct amounts on the processed transactions.



## Test Script Description: Inventory Adjustment

### RFgen Input Requirements

Before you begin testing, ensure, for the combination of plant(s) and material(s) you will be testing, that the following is setup in SAP.

- a. Material
- b. Quantity On Hand
- c. Quantity Available

### Execution Procedures

| ID | Test Case   | Expected Result   | Pass | Fail |
|----|---|---|------|------|
| 1  | Type in a valid Plant _____<br>Press the <b>ENTER</b> key       | RFGEN will validate and accept the plant entered.   |      |      |
| 2  | Type in a valid Material _____<br>Press the <b>ENTER</b> key    | RFGEN will validate and accept the material entered.  |      |      |
| 3  | Type in a valid location _____<br>Press the <b>ENTER</b> key    | RFGEN will validate and accept the location entered.  |      |      |
| 4  | Type in a valid Bin _____<br>Press the <b>ENTER</b> key         | RFGEN will validate and accept the Bin as well as display the unique Bin Type. If there are more than one Bin Type, the user is prompted for the Bin Type |      |      |
| 5  | Type in an invalid Plant _____<br>Press the <b>ENTER</b> key    | RFGEN will validate the plant entered and display an error message – the field will continue to error out until corrected                                 |      |      |
| 6  | Type in an invalid Material _____<br>Press the <b>ENTER</b> key | RFGEN will validate and display an error message – the field will continue to error out until corrected   |      |      |
| 7  | Type in an invalid location _____<br>Press the <b>ENTER</b> key | RFGEN will validate and display an error message – the field will continue to error out until corrected   |      |      |
| 8  | Type in an invalid Bin _____<br>Press the <b>ENTER</b> key      | RFGEN will validate and display an error message – the field will   |      |      |

|    |   |   |  |  |
|----|---|---|--|--|
|    |   | continue to error out until corrected   |  |  |
| 9  | Press the “F5” key with the cursor in the plant field   | RFGEN will display a list of plants   |  |  |
| 10 | Press the “F5” key with the cursor in the plant field to select and return a plant to the plant field               | RFGEN will display a list of plants and when selected, the plant will be returned to the plant field          |  |  |
| 11 | Press the “F5” key with the cursor in the material field  | RFGEN will display a list of materials  |  |  |
| 12 | Press the “F5” key with the cursor in the location field  | RFGEN will display a list of locations  |  |  |
| 13 | Press the “F5” key with the cursor in the location field to select and return a location to the location field      | RFGEN will display a list of locations and when selected, the location will be returned to the location field |  |  |
| 14 | Press the “F5” key with the cursor in the material field to select and return an item to the material field         | RFGEN will display a list of items and when selected, the item will be returned to the material field         |  |  |
| 15 | If the material is batch controlled<br>Material _____<br>Batch _____<br>Location _____<br>Qty _____<br>Reason _____ | RFGEN will display the Batch field, otherwise it will be hidden.  |  |  |
| 16 | If the Adjustment Quantity processing option is set to “blank”<br>Material _____<br>Location _____<br>Qty _____     | RFGEN will disallow a negative quantity available and display an error message                                |  |  |
| 17 | At the RFGEN “Enter to Accept Prompt” the data is submitted   | Confirm the inventory adjustment results  |  |  |

## Overall Test Case Results

|                |  |
|----------------|--|
| Pass/Fail      |  |
| Tester/Date    |  |
| RE-Tester/Date |  |

|                |  |
|----------------|--|
| Actual Results |  |
|----------------|--|

|          |  |
|----------|--|
| Comments |  |
|----------|--|