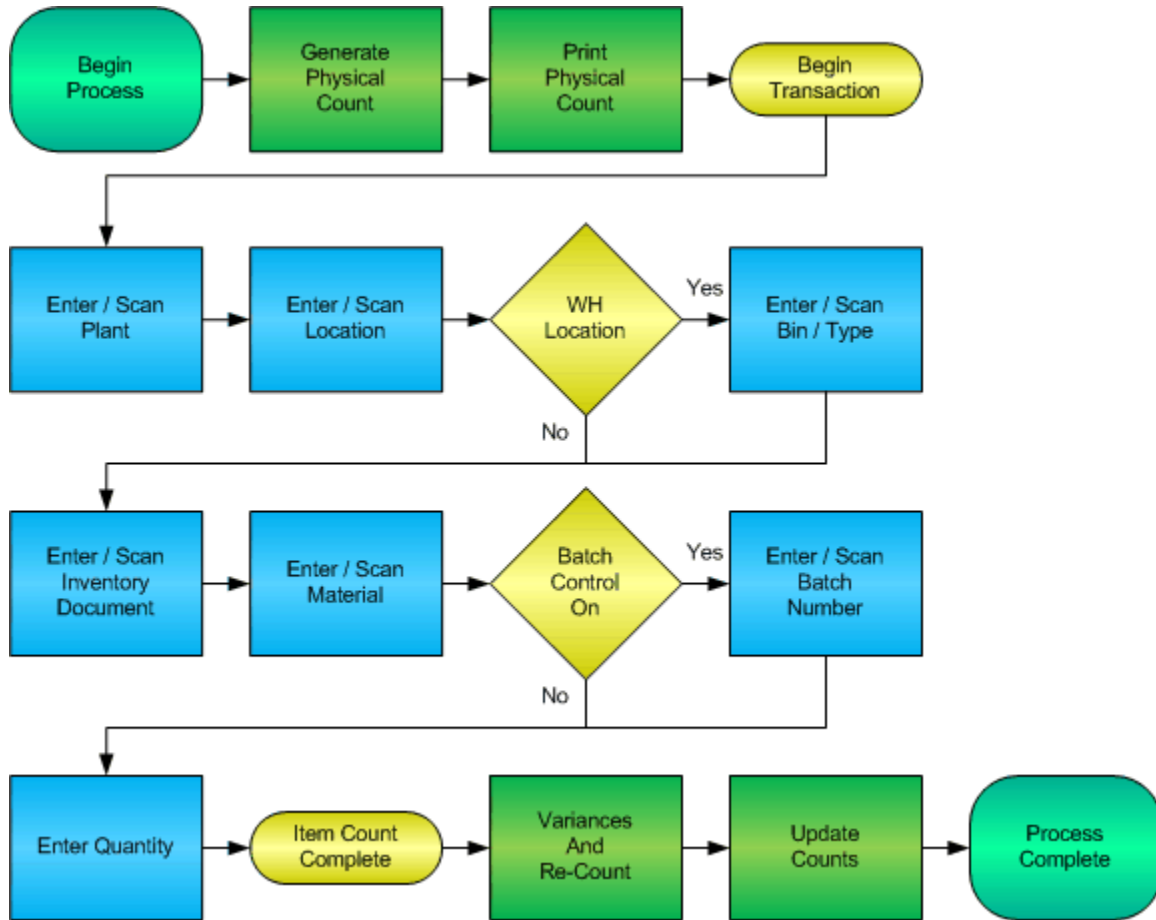


Cycle Count



RFgen Software
1101 Investment Boulevard, Suite 250
El Dorado Hills, CA 95762
888-426-3472

License Agreement

All information contained in this document is the intellectual property of RFgen Software, a division of the DataMAX Software Group, Inc. This document may not be published, nor used without the prior written consent of RFgen Software. Use of the RFgen Software Open Source code is at all times subject to the DataMAX Software Group Open Source Licensing Agreement, which must be accepted at the time the source code is installed on your computer system. For your convenience, a text copy of the DataMAX Software Group Open Source Licensing Agreement is also loaded (and may be printed from) your RFgen-based system.

Requirements

- RFgen Version 5.0 or later

Table of Contents

CYCLE COUNT 1

FIMCC0200 – CYCLE COUNT 3

 ✓ VALIDATIONS 4

 ✓ EDITS 4

 ⇄ FUNCTION KEYS 4

CONSIDERATIONS 5

SAP PROGRAMS – REFERENCE 6

SAP CYCLE COUNT: MIO4..... 6

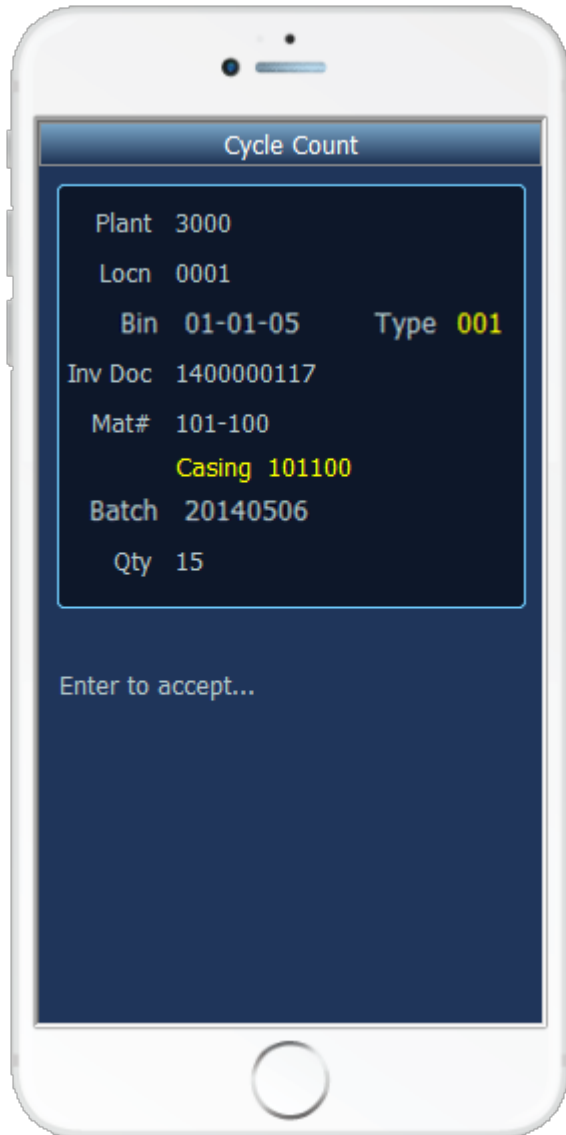
BASIC TEST SCRIPT 7

RFGEN INPUT REQUIREMENTS 8

EXECUTION PROCEDURES 8

OVERALL TEST CASE RESULTS 10

FIMCC0200 – Cycle Count



The Cycle Count mobile application allows for inventory to be counted for a specified cycle count, material number and location within a plant. Cycle Counts are updated with the information entered upon completion of the mobile application.

The Bin and Bin Type fields apply to warehouse enabled locations. Different BAPIs are used when saving to the warehouse module in SAP.

The following conditions apply to the RFgen implementation for the Inventory Cycle Count mobile application within the SAP environment.

Note: any of these parameters may be easily adjusted to meet the unique requirements of your company.

✓ Validations

Prompt	Method of Validation
Plant	T001W
Location	T001L
Bin	LAGP
Bin Type	LAGP
Inventory Document	BAPI_MATPHYSINV_GETLIST
Material	BAPI_MATERIAL_GETLIST and must be in Cycle Count
Batch	BAPI_MATPHYSINV_GETITEMS
Quantity	Numeric and non-negative

✓ Edits

Condition	Special Circumstance
Default Branch Plant	User Defined
Quantity entered < 0	

↔ Function Keys

Key	Function
F3	Exit
F5	Search Data for Current Field

Considerations

1. Does Plant default based on user?
2. Will you allow a count of 0?
3. Is a prompt needed indicating that the Cycle Count has a variance from the current quantity on hand?

SAP Programs – Reference

SAP Cycle Count: MIO4

Inventory count | Edit | Goto | Environment | System | Help

Enter Inventory Count 100000062: Collect Processing

Phys. inv. history | Set zero count | Other count

Plant: 3100 Chicago
Stor. loc.: 0001 Warehouse 0001

Item	Material	Batch	STy	Quantity	UnE	ZC
Material description				Quantity	SKU	
1	1898			100	PC	<input type="checkbox"/>
	HD Brake system		1	100	PC	
2	SWREQ1			3	PCE	<input type="checkbox"/>
	DataMAX test with avail. requirements		1	3	PCE	
3	1898BATCH	0000000235			PC	<input type="checkbox"/>
	Datamax HD Brake system		1	0	PC	
4	1898BATCH	123			PC	<input type="checkbox"/>
	Datamax HD Brake system		1	0	PC	
5	1898BATCH	124			PC	<input type="checkbox"/>
	Datamax HD Brake system		1	0	PC	
6	1898BATCH	SW309TEST			PC	<input type="checkbox"/>
	Datamax HD Brake system		1	0	PC	

Entry 1 of 6

Setup an RFgen Menu

To implement an RFgen Form using SAP Movement Types in an RFgen Menu the movement type needs to be specified.

Enter the Form name, followed by a Space. Enter “-TYPE=” and the proper movement type.

Form/Menu	Description to Display
FIMCC0200	Cyle Count

Basic Test Script

1. Set up the Cycle Count Program in SAP and select materials to be counted.
2. Record quantities on hand from the Ledger for the Plants, Material Numbers and their associated batches and locations that you will perform Cycle Counts on.
3. Create and document the following scenarios:
 - a. Enter a count of 0. If your customization disallows for a count of 0, an error should appear.
 - b. Enter a negative amount. If negative counts are not allowed, an error should appear.
 - c. Enter Quantities on Hand that differs from the current quantity on hand for an item. If your customization requires a second count, or a notification that there is a variance from the current quantity on hand, the appropriate messages should appear.
4. After completing the Cycle Count verify that the Cycle Count Status has updated.
5. Approve and update the Cycle Count, then verify that the quantities were updated.

Test Script Description: Cycle Count

RFgen Input Requirements

Before you begin testing, ensure, for the combination of plant(s) and material(s) you will be testing, that the following is setup in SAP.

- a. Material
- b. Material Locations
- c. Cycle Count Documents

Execution Procedures

ID	Test Case	Expected Result	Pass	Fail
1	Type in a valid Plant _____ Press the ENTER key	RFGEN will validate and accept the plant entered.		
2	Type in a valid material _____ Press the ENTER key	RFGEN will validate and accept the material entered.		
3	Type in a valid location _____ Press the ENTER key	RFGEN will validate and accept the location entered.		
4	Type in a valid Bin _____ Press the ENTER key	RFGEN will validate and accept the Bin as well as display the unique Bin Type. If there are more than one Bin Type, the user is prompted for the Bin Type		
5	Type in an invalid Plant _____ Press the ENTER key	RFGEN will validate the plant entered and display an error message – the field will continue to error out until corrected		
6	Type in an invalid material _____ Press the ENTER key	RFGEN will validate and display an error message – the field will continue to error out until corrected		
7	Type in an invalid location _____ Press the ENTER key	RFGEN will validate and display an error message – the field will continue to error out until corrected		
8	Type in an invalid Bin _____ Press the ENTER key	RFGEN will validate and display an error message – the field will		

		continue to error out until corrected		
9	Press the "F5" key with the cursor in the plant field	RFGEN will display a list of plants		
10	Press the "F5" key with the cursor in the plant field to select and return a plant	RFGEN will display a list of plants and when selected, the plant will be returned to the plant field		
11	Press the "F5" key with the cursor in the Inv Doc field	RFGEN will return a list available cycle count documents		
12	Press the "F5" key with the cursor in the Inv Doc field and return a Inv Doc	RFGEN will display a list of Inventory Documents and when selected, the document will be returned to the Inv Doc field		
13	Press the "F5" key with the cursor in the material field	RFGEN will display a list of materials available for cycle counting. Previously counted materials will have an asterisk.		
14	Press the "F5" key with the cursor in the material field and return a material	RFGEN will display a list of materials available for cycle count and when selected, the material number will be returned to the material field		
15	Press the "F5" key with the cursor in the location field	RFGEN will display a list of locations for the material entered in the material field		
16	Press the "F5" key with the cursor in the location field to return a location	RFGEN will display a list of locations and when selected, the location will be returned for the material entered in the material field		
17	If an item has not been selected for cycle count Cycle# ____ Material ____ Qty _____	RFGEN will disallow the item and display an error message		
18	If an item has been selected for cycle count Cycle# _____ Material _____ Qty ____	RFGEN will process the cycle count and advance the cycle count status		
19	At the RFGEN "Enter to Accept Prompt" the data is submitted to SAP	Confirm the cycle count results		

Overall Test Case Results

Pass/Fail	
Tester/Date	
RE-Tester/Date	

Actual Results	
----------------	--

Comments	
----------	--