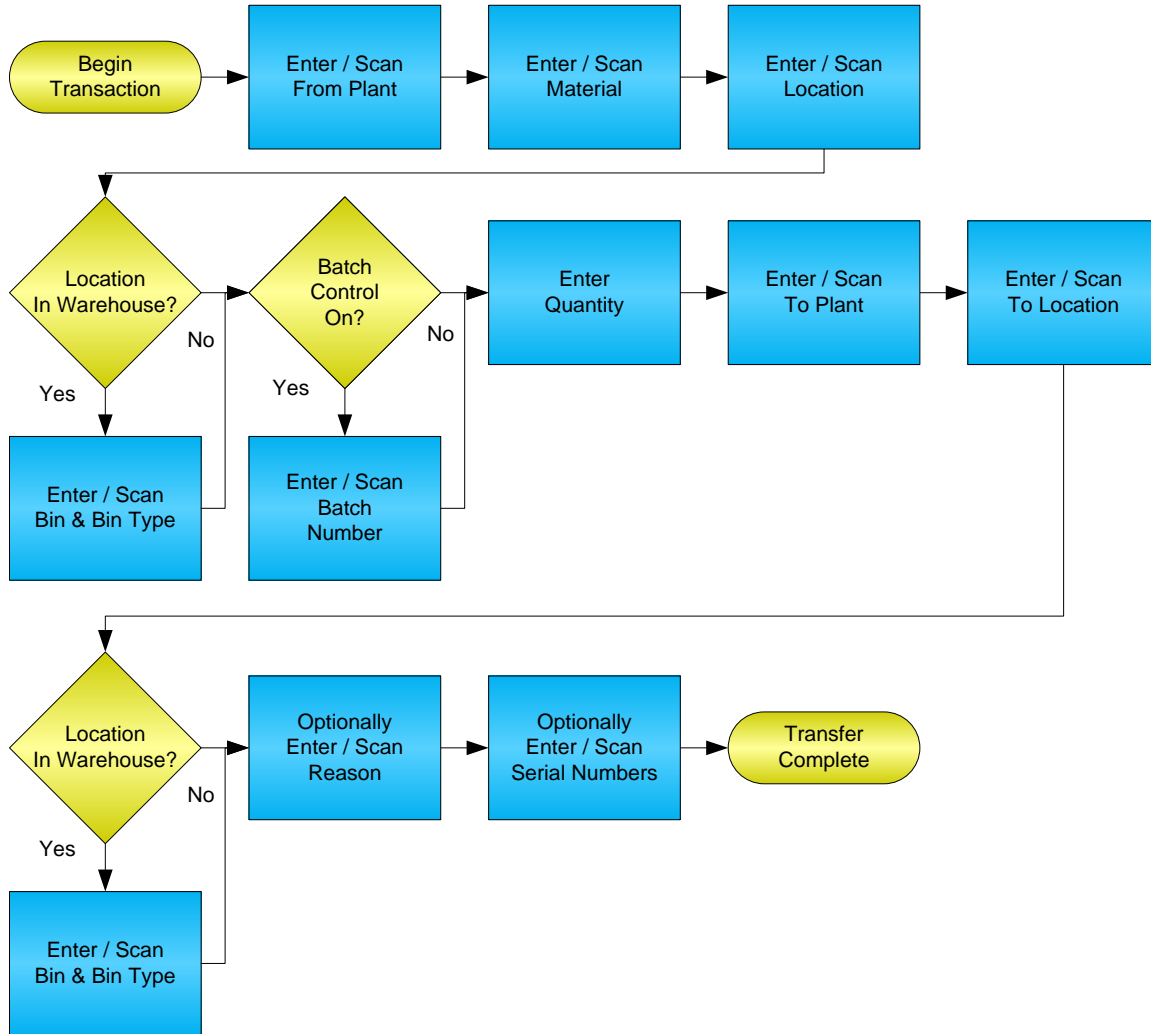


Inventory Transfer w/ Serial Numbers



RFgen Software
1101 Investment Boulevard, Suite 250
El Dorado Hills, CA 95762
888-426-3472

License Agreement

All information contained in this document is the intellectual property of RFgen Software, a division of the DataMAX Software Group, Inc. This document may not be published, nor used without the prior written consent of RFgen Software. Use of the RFgen Software Open Source code is at all times subject to the DataMAX Software Group Open Source Licensing Agreement, which must be accepted at the time the source code is installed on your computer system. For your convenience, a text copy of the DataMAX Software Group Open Source Licensing Agreement is also loaded (and may be printed from) your RFgen-based system.

Requirements

- RFgen Version 5.0 or later

Table of Contents

| | |
|--|----|
| INVENTORY TRANSFER W/ SERIAL NUMBERS | 1 |
| FIMIT0210 – INVENTORY TRANSFER W/ SERIAL NUMBERS | 3 |
| ✓ VALIDATIONS | 5 |
| ✓ EDITS | 5 |
| ⇄ FUNCTION KEYS | 5 |
| CONSIDERATIONS | 6 |
| SAP PROGRAMS – REFERENCE | 7 |
| SAP INVENTORY TRANSFERS: MB1B | 7 |
| BASIC TEST SCRIPT | 8 |
| RFGEN INPUT REQUIREMENTS | 9 |
| EXECUTION PROCEDURES | 9 |
| OVERALL TEST CASE RESULTS | 11 |

FIMIT0210 – Inventory Transfer w/ Serial Numbers



This mobile application transfers inventory from a warehouse to another warehouse or from one location to another location within a warehouse. Both the IM and WM modules are supported. Fields such as Bin and Bin Type become invisible when locations entered are not WM managed. An Inventory Transfer record and the results can be seen in MB1B.

This mobile application is identical to the original Inventory Transfer but has added the collection of serial numbers of the materials being moved.

The following conditions apply to the RFgen implementation for the Inventory Transfer mobile application within the SAP environment.

Note: any of these parameters may be easily adjusted to meet the unique requirements of your company.

✓ **Validations**

| Prompt | Method of Validation |
|---------------|--|
| Plant | T001W |
| Material | BAPI_MATERIAL_GETLIST |
| Batch | BAPI_MATERIAL_GETBATCHES |
| From Location | BAPI_MATERIAL_GETLIST |
| From Bin | LAGP |
| From Bin Type | LAGP |
| Quantity | BAPI_MATERIAL_AVAILABILITY |
| To Plant | T001W |
| To Location | BAPI_MATERIAL_GETLIST |
| To Bin | LAGP |
| To Bin Type | LAGP |
| Reason | T157E UDC 42/RC |
| Serial | EQUI and JEST are used to validate a serial number |

✓ **Edits**

| Condition | Special Circumstance |
|--|----------------------|
| Default Plant | User Defined |
| Quantity not greater than Quantity on Hand | |
| Quantity entered <=0 | |

↩ **Function Keys**

| Key | Function |
|-----|-------------------------------|
| F3 | Exit |
| F5 | Search Data for Current Field |

Considerations

1. Does Plant default based on user?
2. Will negative quantities be allowed
3. Is lot control used?

SAP Programs – Reference

SAP Inventory Transfers: MB1B

The screenshot shows the SAP MB1B 'Enter Transfer Posting: New Item 0001' dialog box. The interface includes a menu bar with 'Transfer posting', 'Edit', 'Goto', 'Movement type', 'Environment', 'System', and 'Help'. Below the menu is a toolbar with various icons. The main area contains several input fields and sections:

- Movement type:** 301 TF tfr.plnt.to plnt.
- Material:** 1898
- Qty. in:** Unit of entry: 10
- Plant:** 3000
- Stor. loc.:** 0002
- Batch:** (empty field)
- Acct.assgt:** Goods recipient (empty field)
- Receiving plant:**
- Recv. SLoc:**
- Receiving batch:** (empty field)
- Text:** (empty field)
- Reason for mvt.:** (empty field)

Setup an RFgen Menu

To implement an RFgen Form using SAP Movement Types in an RFgen Menu the movement type needs to be specified.
Enter the Form name, followed by a Space. Enter “-TYPE=” and the movement type.
These are examples only.

| Form/Menu | Description to Display |
|---------------------|---------------------------|
| FIMIT0200 -TYPE=301 | Plant Transfer |
| FIMIT0200 -TYPE=303 | Plant Transfer w/ Transit |
| FIMIT0200 -TYPE=302 | Transfer Reversal |
| FIMIT0200 -TYPE=311 | Location Transfer |
| FIMIT0200 -TYPE=305 | To Location from Transit |

Basic Test Script

1. Record quantities on hand from for the Plant, Material and their associated batches and locations that you will perform Inventory Transfers on.
2. Create and document the following scenarios:
 - a. Transfer an amount within the quantity on hand for a material
 - b. Transfer a negative amount for a material. A negative issue warning should appear
 - c. Transfer more than the quantity on hand for a material. An “Exceeding quantity on hand” error should appear.
 - d. Attempt to transact on materials that are not set up in particular plants.
 - e. Attempt to transfer a material to the same location. A “Plant or Location error” should appear.
 - f. If the setup required a transfer quantity threshold be placed on a material, attempt to issue over the quantity amount authorized for a particular material. An “exceeding threshold limit” error should appear.
3. View the results using MMBE and see that the quantity on hand updated to the correct amounts on the processed transactions.

Test Script Description: Inventory Transfer

RFgen Input Requirements

Before you begin testing, ensure, for the combination of plant(s) and material(s) you will be testing, that the following is setup in SAP.

- a. Material
- b. Quantity On Hand
- c. Quantity Available
- d. Serial Numbers

Execution Procedures

| ID | Test Case | Expected Result | Pass | Fail |
|----|---|---|------|------|
| 1 | Type in a valid Plant _____ Press the ENTER key | RFGEN will validate and accept the plant entered. | | |
| 2 | Type in a valid material _____ Press the ENTER key | RFGEN will validate and accept the material entered. | | |
| 3 | Type in a valid location _____ Press the ENTER key | RFGEN will validate and accept the location entered. | | |
| 4 | Type in a valid Bin _____ Press the ENTER key | RFGEN will validate and accept the Bin as well as display the unique Bin Type. If there are more than one Bin Type, the user is prompted for the Bin Type | | |
| 5 | Type in a valid Batch _____ Press the ENTER key | RFGEN will accept the Batch entered. | | |
| 6 | Type in a valid Quantity _____ Press the ENTER key | RFGEN will validate and accept the Quantity entered. | | |
| 7 | Type in a valid To Plant _____ Press the ENTER key | RFGEN will validate and accept the To Plant entered. | | |
| 8 | Type in a valid To Location _____ Press the ENTER key | RFGEN will validate and accept the To Location entered. | | |
| 9 | Type in a valid To Bin _____ Press the ENTER key | RFGEN will validate and accept the To Bin entered. | | |

| | | | | |
|----|--|---|--|--|
| 10 | Type in a valid Reason _____ Press the ENTER key | RFGEN will validate and accept the Reason entered. | | |
| 11 | Type in a valid Serial _____ Press the ENTER key | RFGEN will validate and accept the Serial entered. | | |
| 12 | Type in an invalid Plant _____ Press the ENTER key | RFGEN will validate the plant entered and display an error message – the field will continue to error out until corrected | | |
| 13 | Type in an invalid material _____ Press the ENTER key | RFGEN will validate and display an error message – the field will continue to error out until corrected | | |
| 14 | Type in an invalid location _____ Press the ENTER key | RFGEN will validate and display an error message – the field will continue to error out until corrected | | |
| 15 | Type in a invalid Bin _____ Press the ENTER key | RFGEN will validate and display an error message – the field will continue to error out until corrected | | |
| 16 | Type in an invalid Batch _____ Press the ENTER key | RFGEN will validate the Batch entered and display an error message – the field will continue to error out until corrected | | |
| 17 | Type in an invalid Quantity _____ Press the ENTER key | RFGEN will validate and display an error message – the field will continue to error out until corrected | | |
| 18 | Type in an invalid To Plant _____ Press the ENTER key | RFGEN will validate and display an error message – the field will continue to error out until corrected | | |
| 19 | Type in an invalid To Location _____ Press the ENTER key | RFGEN will validate and display an error message – the field will continue to error out until corrected | | |
| 20 | Type in an invalid To Bin _____ Press the ENTER key | RFGEN will validate and display an error message – the field will continue to error out until corrected | | |
| 21 | Type in an invalid Reason _____ Press the ENTER key | RFGEN will validate and display an error message – the field will continue to error out until corrected | | |
| 22 | Type in an invalid Serial _____ Press the ENTER key | RFGEN will validate and display an error message – the field will continue to error out until corrected | | |
| 23 | Press the “F5” key with the cursor in the Plant field | RFGEN will display a list of plants | | |

| | | | | |
|----|---|--|--|--|
| 24 | Press the “F5” key with the cursor in the Material field | RFGEN will display a list of materials | | |
| 25 | Press the “F5” key with the cursor in the Location field | RFGEN will display a list of locations | | |
| 26 | Press the “F5” key with the cursor in the Bin field | RFGEN will display a list of bins | | |
| 27 | Press the “F5” key with the cursor in the Batch field | RFGEN will display a list of batches | | |
| 28 | Press the “F5” key with the cursor in the To Plant field | RFGEN will display a list of plants | | |
| 29 | Press the “F5” key with the cursor in the To Location field | RFGEN will display a list of locations | | |
| 30 | Press the “F5” key with the cursor in the To Bin field | RFGEN will display a list of bins | | |
| 31 | Press the “F5” key with the cursor in the Reason field | RFGEN will display a list of reasons | | |
| 32 | Click the Submit to SAP button | Confirm the inventory transfer accumulated records | | |
| 33 | Click the New Line button | Accumulates the data and restarts the app | | |

Overall Test Case Results

| | |
|-----------------------|--|
| Pass/Fail | |
| Tester/Date | |
| RE-Tester/Date | |

| | |
|-----------------------|--|
| Actual Results | |
|-----------------------|--|

| | |
|-----------------|--|
| Comments | |
|-----------------|--|

