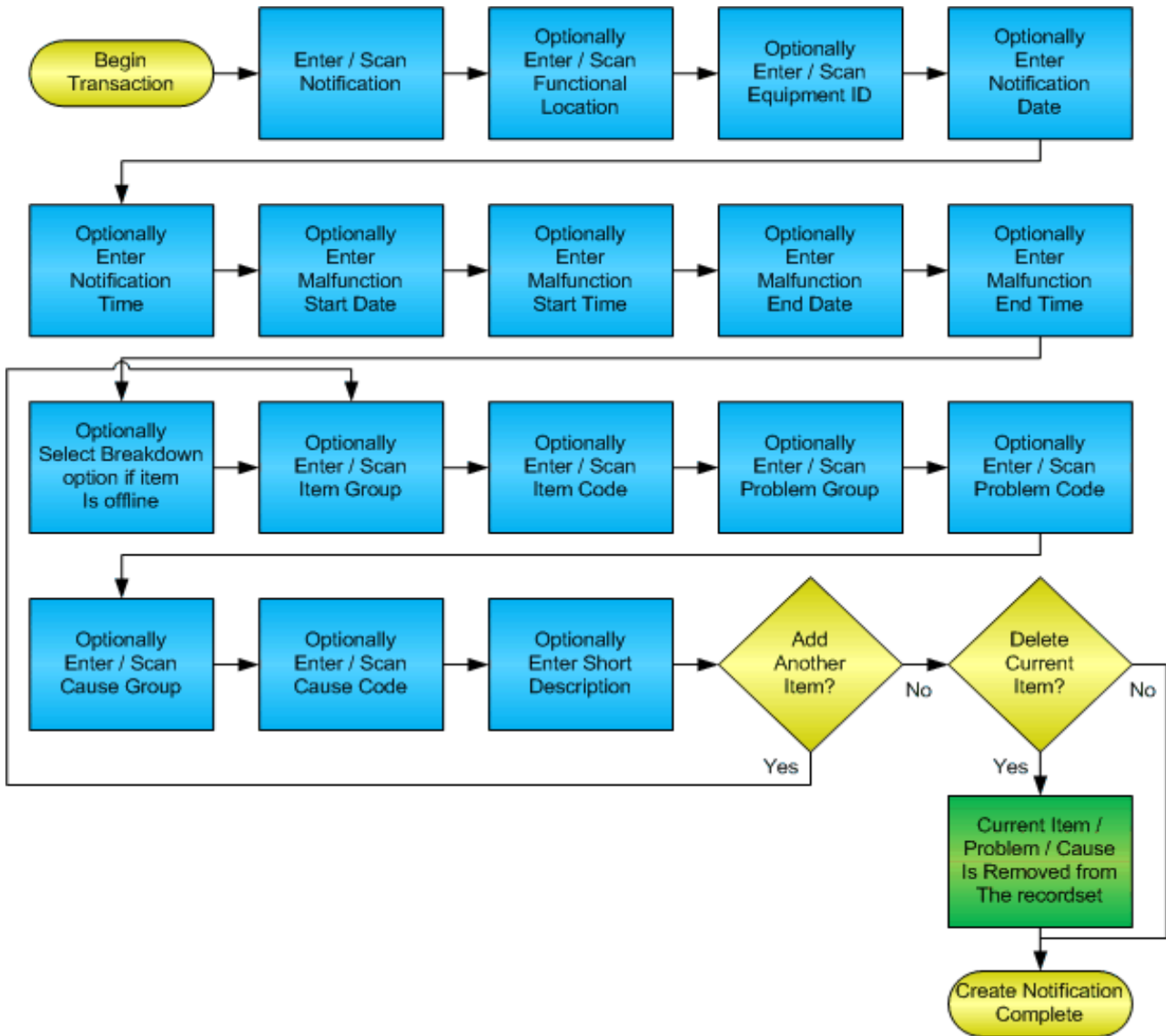


Modify Notification



RFgen Software
1101 Investment Boulevard, Suite 250
El Dorado Hills, CA 95762
888-426-3472

License Agreement

All information contained in this document is the intellectual property of RFgen Software, a division of the DataMAX Software Group, Inc. This document may not be published, nor used without the prior written consent of RFgen Software. Use of the RFgen Software Open Source code is at all times subject to the DataMAX Software Group Open Source Licensing Agreement, which must be accepted at the time the source code is installed on your computer system. For your convenience, a text copy of the DataMAX Software Group Open Source Licensing Agreement is also loaded (and may be printed from) your RFgen-based system.

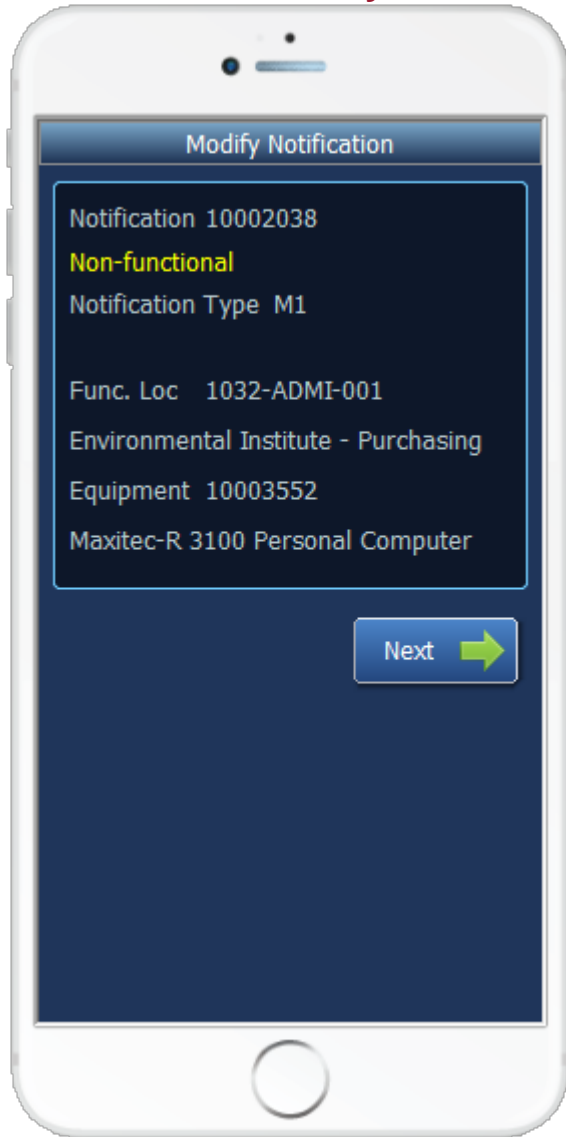
Requirements

- RFgen Version 5.0 or later

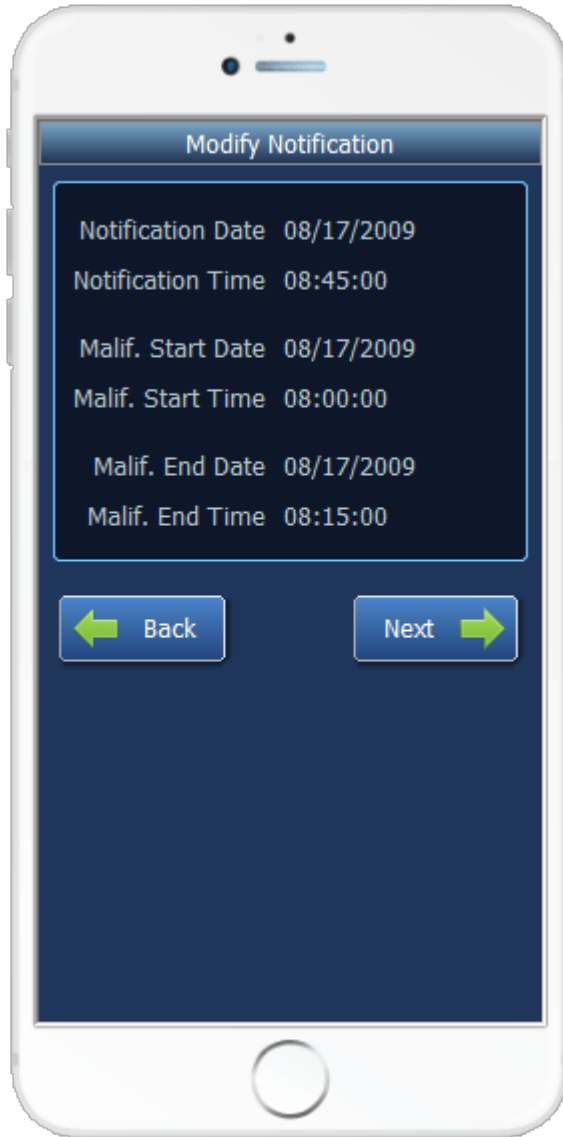
Table of Contents

MODIFY NOTIFICATION.....	1
FPMMN0200 – MODIFY NOTIFICATION.....	3
✓ VALIDATIONS	5
✓ EDITS	5
⇨ FUNCTION KEYS	5
CONSIDERATIONS	5
SAP PROGRAMS – REFERENCE	6
SAP PM NOTIFICATION: IW28.....	6
TEST SCRIPT DESCRIPTION: MODIFY NOTIFICATION.....	11
EXECUTION PROCEDURES	11
OVERALL TEST CASE RESULTS	13

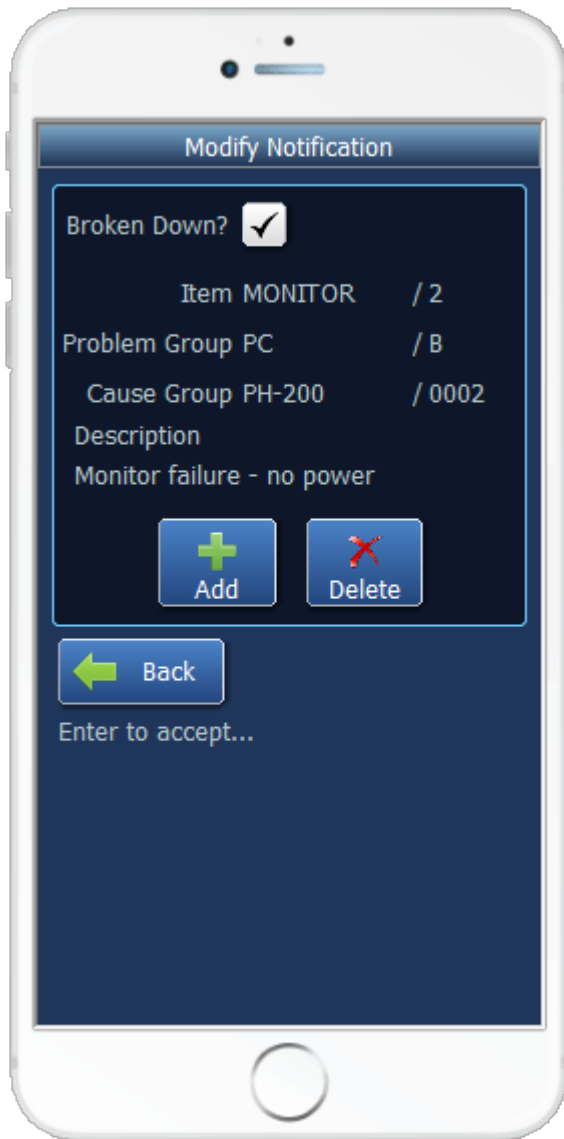
FPMMN0200 – Modify Notification



Page 1



Page 2



This mobile application allows changes to the required details for creating a notification. The third page allows the user to review multiple items, the problem with that item and the root cause of the problem. In addition, any item / problem / cause combination can be added or deleted.

The following conditions apply to the RFgen implementation for the Modify Notification transaction within the SAP environment.

Note: any of these parameters may be easily adjusted to meet the unique requirements of your company.

✓ Validations

Prompt	Method of Validation
Functional Location	IFLS_VIEW
Equipment	EQUI_ADDR
Dates and Times	Checked for validity only
Item Group	Table: QPGR, Field: CODEGRUPPE, KATALOGART=B
Item Code	Table: QPCD, Field: CODE, KATALOGART=B
Problem Group	Table: QPGR, Field: CODEGRUPPE, KATALOGART=C
Problem Code	Table: QPCD, Field: CODE, KATALOGART=C
Cause Group	Table: QPGR, Field: CODEGRUPPE, KATALOGART=5
Cause Code	Table: QPCD, Field: CODE, KATALOGART=5
Short Description	

✓ Edits

Condition	Special Circumstance

↔ Function Keys

Key	Function
F3	Exit
F5	Search Data for Current Field

Considerations

1. Do you want to limit the allowed modifications?

SAP Programs – Reference

SAP PM Notification: IW28

Maintenance notification Edit Goto Extras Environment System Help **SAP**

Change PM Notification: Maintenance request

Notification 10002038 M1 Non-functional

Status OSNO

Order

Notification Reference object Malfunction, breakdown Location data Sche...

Reference object

Functional loc. 1032-ADMI-001 Environmental Institute - Purchasing

Equipment 10003552 Maxitec-R 3100 Personal Computer

Assembly

Responsibilities

Planner group JWT / 0008 John Thomas

Main WorkCtr PC-SERVS / 1200 Technician South

Reported by SAM Notif.date 08/17/2009 08:45:00

Subject

Description Non-functional

Item

Object part MONITOR 2 Signaling Cable

Damage PC B Operating System Does not Boot

Text Monitor failure - no power

Cause code PH-200 0002 Poorly Defined Product Specifications

Cause text

Entry 1 from 1

The screenshot displays the SAP 'Change PM Notification: Maintenance request' interface. At the top, there is a menu bar with 'Maintenance notification', 'Edit', 'Goto', 'Extras', 'Environment', 'System', and 'Help'. Below the menu is a toolbar with various icons. The main title bar reads 'Change PM Notification: Maintenance request'. A secondary toolbar includes icons for search, navigation, and a 'Partner' button. The main data area shows the following fields:

- Notification: 10002038 M1 Non-functional
- Status: OSNO
- Order: [Empty]

Below these fields are several tabs: 'Notification', 'Reference object', 'Malfunction, breakdown', 'Location data', and 'Sche...'. The 'Malfunction, breakdown' tab is active, showing the following details:

- Start date:** Malfunction start: 08/17/2009, Start Malfn (T): 08:00:00
- End:** Malfunction end: 08/17/2009, Malfunctn End (Time): 08:15:00
- Breakdown:** Breakdown, Breakdown duration: [Empty] H

The interface includes a scroll bar on the right and a status bar at the bottom.

The screenshot shows the SAP PM Notification interface. At the top, the title bar reads 'Change PM Notification: Maintenance request'. Below this, there are fields for 'Notification' (10002038), 'M1' (M1), and 'Non-functional' (Non-functional). The status is 'OSNO'. The 'Order' field is empty. Below these fields are tabs for 'Location data', 'Scheduling overview', 'Items', 'Tasks', and 'Activities'. The 'Items' tab is selected, showing a table with the following data:

No.	Code gr...	Obj...	Object part	Code gr...	Da...	Damage	Text
1	MONITOR	2	Signaling Cable	PC	B	Operating System Does not Monito	

At the bottom of the table, there are navigation icons and a status bar showing 'Entry 1 of 1'.

PM Notification Edit Goto Extras Environment System Help

Change PM Notification: Maintenance request

Notification: 10002038 M1 Non-functional

Status: OSNO

Order: []

Location data | Scheduling overview | **Items** | Tasks | Activities

Items | Causes | Tasks | Activities

For item 1

Object part: MONITOR 2 Signaling Cable

Damage: PC B Operating System Does not Boot

Text: Monitor failure - no power

Causes for Item

No.	Code gr.	Ca.	Cause code text	Cause text	C.	Created by	Cre
1	PH-200	0002	Poorly Defined Product Sp			DATAMAX	08

Entry 1 frm 1

Basic Test Script

1. Enter a notification
2. Enter a functional location and/or equipment numbers
3. Enter valid and invalid date and time values
4. Note if the item is currently non-operational and record all items, problems and causes

Test Script Description: Modify Notification

Execution Procedures

ID	Test Case	Expected Result	Pass	Fail
1	Enter a valid Notification ____ Press the ENTER key	RFGEN will validate and accept the notification entered.		
2	Enter an invalid Notification ____ Press the ENTER key	RFGEN will validate and display an error message – the field will continue to error out until corrected		
3	Type in a valid Functional Location _____ Press the ENTER key	RFGEN will validate and accept the Functional Location entered.		
4	Type in an invalid Functional Location _____ Press the ENTER key	RFGEN will validate and display an error message – the field will continue to error out until corrected		
5	Type in a valid Equipment ID _____ Press the ENTER key	RFGEN will validate the Equipment ID		
6	Type in an invalid Equipment ID ____ Press the ENTER key	RFGEN will validate and display an error message – the fields will continue to error out until corrected		
7	Enter valid dates and times	RFGEN will accept a valid date or time entry		
8	Enter invalid dates and times	RFGEN will validate and display an error message – the fields will continue to error out until corrected		
9	Enter a malfunction End date before the	RFGEN will validate and display an error message – the fields will		

	malfunction Start date	continue to error out until corrected		
10	Type in a valid Item Group _____ Press the ENTER key	RFGEN will validate the Item Group		
11	Type in an invalid Item Group _____ Press the ENTER key	RFGEN will validate and display an error message – the fields will continue to error out until corrected		
12	Type in a valid Item Code _____ Press the ENTER key	RFGEN will validate the Item Code		
13	Type in an invalid Item Code _____ Press the ENTER key	RFGEN will validate and display an error message – the fields will continue to error out until corrected		
14	Type in a valid Problem Group _____ Press the ENTER key	RFGEN will validate the Problem Group		
15	Type in an invalid Problem Group _____ Press the ENTER key	RFGEN will validate and display an error message – the fields will continue to error out until corrected		
16	Type in a valid Problem Code _____ Press the ENTER key	RFGEN will validate the Problem Code		
17	Type in an invalid Problem Code _____ Press the ENTER key	RFGEN will validate and display an error message – the fields will continue to error out until corrected		
18	Type in a valid Cause Group _____ Press the ENTER key	RFGEN will validate the Cause Group		
19	Type in an invalid Cause Group _____ Press the ENTER key	RFGEN will validate and display an error message – the fields will continue to error out until corrected		
20	Type in a valid Cause Code _____ Press the ENTER key	RFGEN will validate the Cause Code		
21	Type in an invalid Cause Code _____ Press the ENTER key	RFGEN will validate and display an error message – the fields will continue to error out until corrected		
22	Click the 'Add' button and repeat.	RFGEN will accept all entered items, scroll between them with the Back and Next buttons and finally submit the data to SAP.		
23	Click the 'Del' button.	RFGEN will remove a previously entered item / problem / cause combination		
24	Enter to accept	RFGEN will submit the modified data to SAP		

Overall Test Case Results

Pass/Fail	
Tester/Date	
RE-Tester/Date	

Actual Results	
-----------------------	--

Comments	
-----------------	--