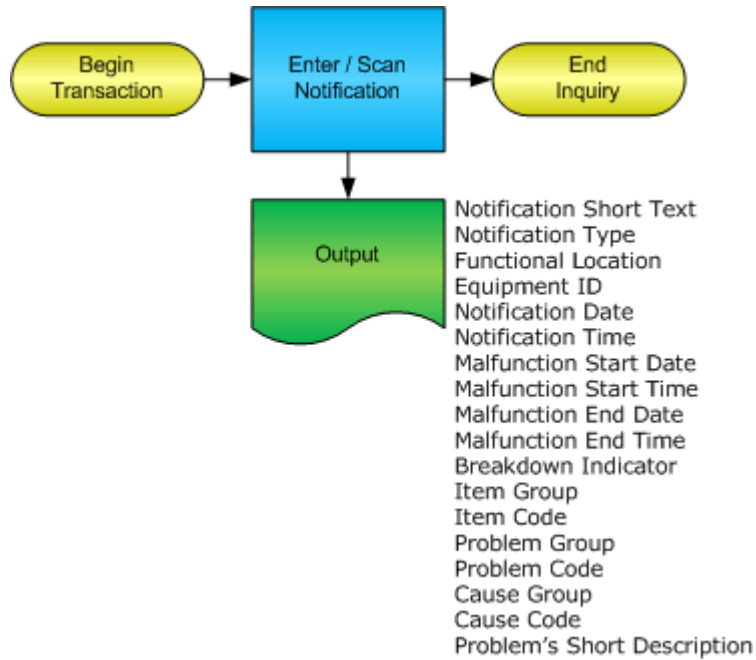


Notification Inquiry



RFgen Software
1101 Investment Boulevard, Suite 250
El Dorado Hills, CA 95762
888-426-3472

License Agreement

All information contained in this document is the intellectual property of RFgen Software, a division of the DataMAX Software Group, Inc. This document may not be published, nor used without the prior written consent of RFgen Software. Use of the RFgen Software Open Source code is at all times subject to the DataMAX Software Group Open Source Licensing Agreement, which must be accepted at the time the source code is installed on your computer system. For your convenience, a text copy of the DataMAX Software Group Open Source Licensing Agreement is also loaded (and may be printed from) your RFgen-based system.

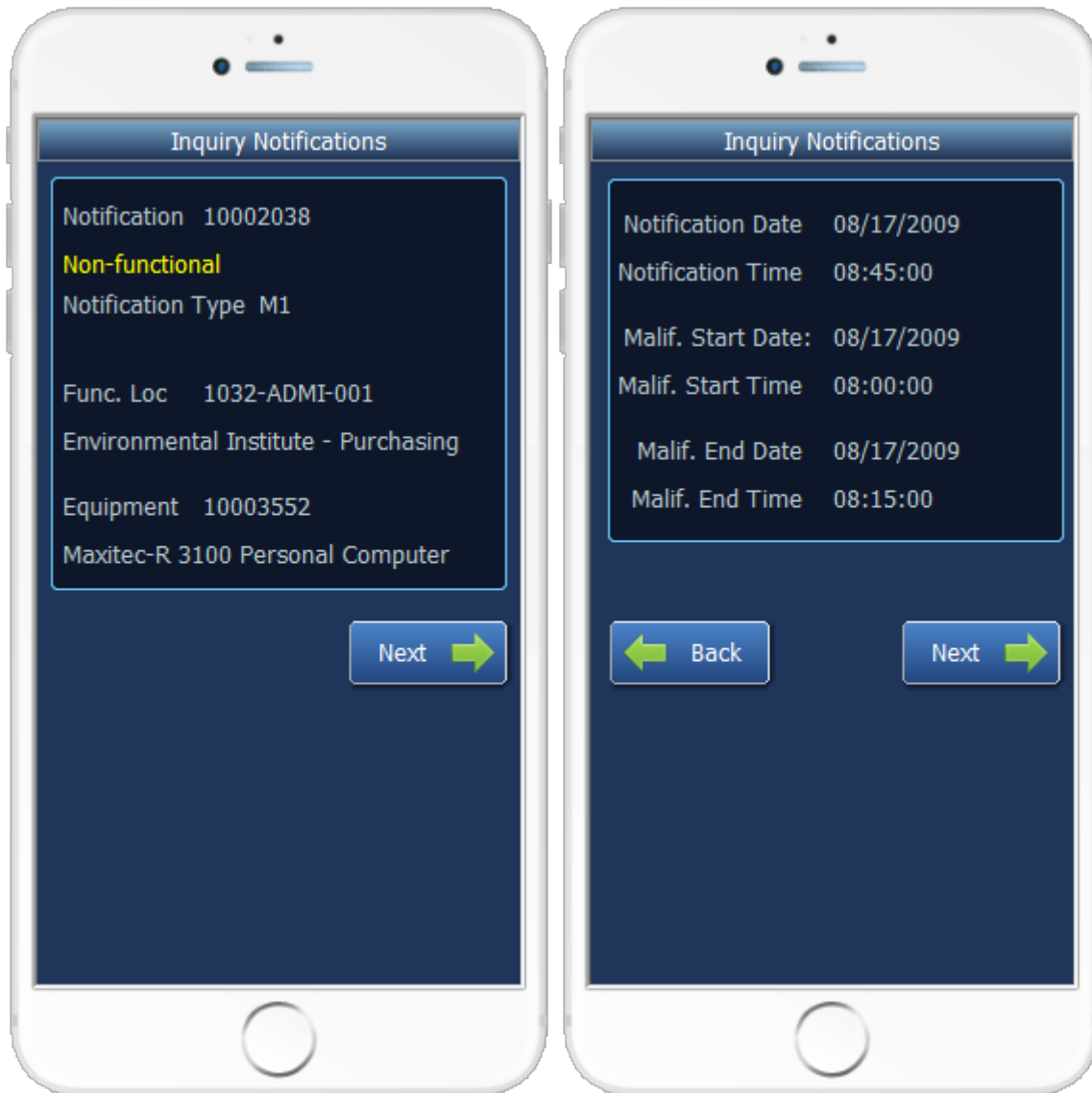
Requirements

- RFgen Version 5.0 or later

Table of Contents

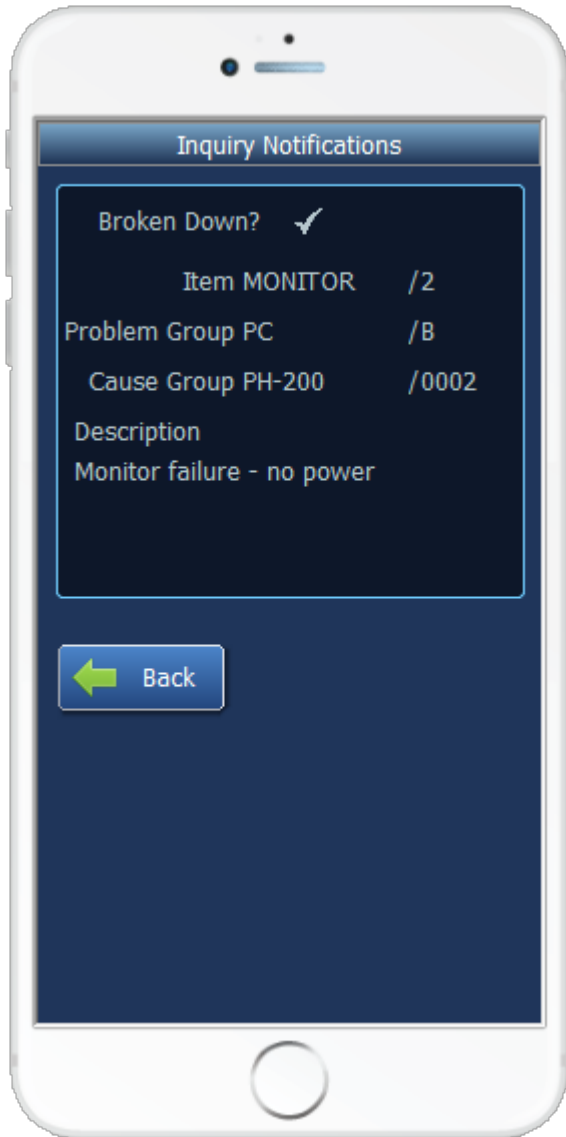
NOTIFICATION INQUIRY	1
FPMQN0200 – NOTIFICATION INQUIRY	3
✓ VALIDATIONS	5
✓ EDITS	5
⇌ FUNCTION KEYS	5
SAP PROGRAMS – REFERENCE	6
SAP PROGRAMS – REFERENCE IW28 (IN READ-ONLY MODE)	6
TEST SCRIPT DESCRIPTION: NOTIFICATION INQUIRY	9
EXECUTION PROCEDURES	9
OVERALL TEST CASE RESULTS	9

FPMQN0200 – Notification Inquiry



Page 1

Page 2



Page 3

This mobile application displays the details of a notification. The third page allows the browse all recorded items by clicking the Back and Next buttons

The following conditions apply to the RFgen implementation for the Notification Inquiry transaction within the SAP environment.

Note: any of these parameters may be easily adjusted to meet the unique requirements of your company.

✓ **Validations**

Prompt	Method of Validation
Notification	BAPI_ALM_NOTIF_GET_DETAIL

✓ **Edits**

Condition	Special Circumstance

↔ **Function Keys**

Key	Function
F3	Exit
F5	Search Data for Current Field

SAP Programs – Reference

SAP Programs – Reference IW28 (in read-only mode)

The screenshot displays the SAP IW28 program interface for a maintenance notification. The title bar reads "Change PM Notification: Maintenance request". The main data area shows the following fields:

Notification	10002038	M1	Non-functional
Status	OSNO		
Order			

Below the data area, there are several tabs: "Notification", "Reference object", "Malfunction, breakdown", "Location data", and "Sche...". The "Malfunction, breakdown" tab is currently active, showing the following details:

Start date	
Malfunction start	08/17/2009
Start Malfn (T)	08:00:00
End	
Malfunction end	08/17/2009
Malfunctn End (Time)	08:15:00
Breakdown	
<input checked="" type="checkbox"/> Breakdown	Breakdown duration <input type="text"/> H

The screenshot displays the SAP PM Notification: Maintenance request interface. At the top, there is a menu bar with options: PM Notification, Edit, Goto, Extras, Environment, System, and Help. Below the menu is a toolbar with various icons for navigation and actions. The main title of the window is "Change PM Notification: Maintenance request".

Below the title, there are several input fields for notification details:

- Notification: 10002038
- M1: Non-functional
- Status: OSNO
- Order: (empty)

There are tabs for "Location data", "Scheduling overview", "Items", "Tasks", and "Activities". The "Items" tab is currently selected. Within the "Items" tab, there are sub-tabs for "Items", "Causes", "Tasks", and "Activities".

The main data area contains a table with the following columns: No., Code gr..., Obj..., Object part, Code gr..., Da..., Damage, and Text. The table has one row of data:

No.	Code gr...	Obj...	Object part	Code gr...	Da...	Damage	Text
1	MONITOR	2	Signaling Cable	PC	B	Operating System Does not Monito	

At the bottom of the table area, there is a status bar showing "Entry 1 of 1" and several icons for document management.

PM Notification Edit Goto Extras Environment System Help

Change PM Notification: Maintenance request

Notification: 10002038 M1 Non-functional

Status: OSNO

Order: []

Location data | Scheduling overview | **Items** | Tasks | Activities

Items | Causes | Tasks | Activities

For item 1

Object part: MONITOR 2 Signaling Cable

Damage: PC B Operating System Does not Boot

Text: Monitor failure - no power

Causes for Item

No.	Code gr.	Ca.	Cause code text	Cause text	C.	Created by	Cre
1	PH-200	0002	Poorly Defined Product Sp		[]	DATAMAX	08

Entry 1 frm 1

Basic Test Script

1. Enter a notification

Test Script Description: Notification Inquiry

Execution Procedures

ID	Test Case	Expected Result	Pass	Fail
1	Enter a valid Notification ____ Press the ENTER key	RFGEN will validate and accept the type entered.		
2	Enter an invalid Notification ____ Press the ENTER key	RFGEN will validate and display an error message – the field will continue to error out until corrected		

Overall Test Case Results

Pass/Fail	
Tester/Date	
RE-Tester/Date	

Actual Results	
-----------------------	--

Comments	
-----------------	--