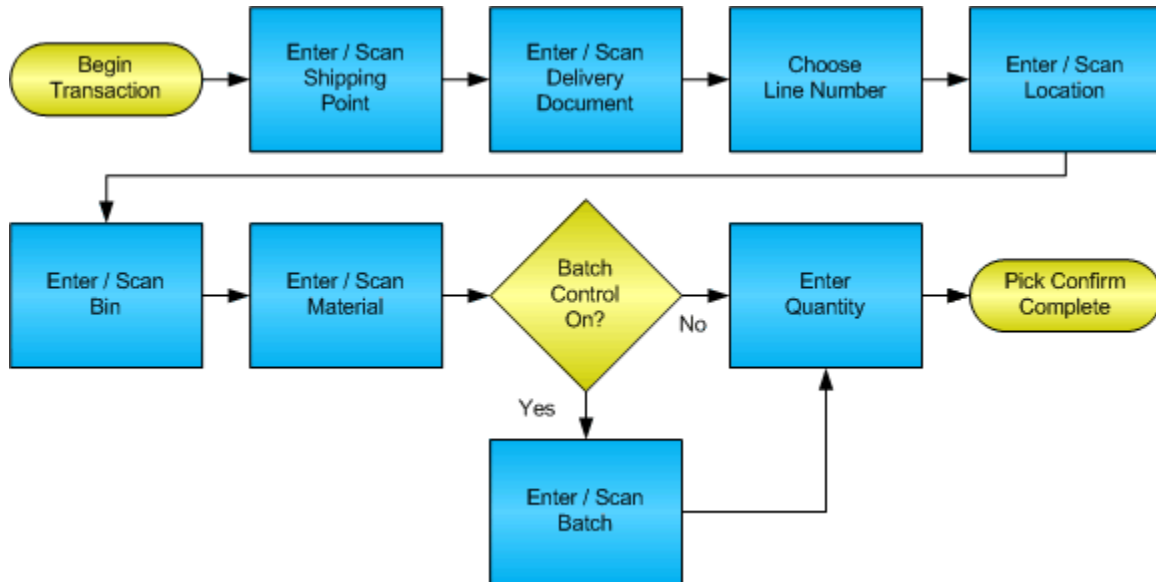


Sales Order Pick Confirmation



RFgen Software

1101 Investment Boulevard, Suite 250
El Dorado Hills, CA 95762
888-426-3472

License Agreement

All information contained in this document is the intellectual property of RFgen Software, a division of the DataMAX Software Group, Inc. This document may not be published, nor used without the prior written consent of RFgen Software. Use of the RFgen Software Open Source code is at all times subject to the DataMAX Software Group Open Source Licensing Agreement, which must be accepted at the time the source code is installed on your computer system. For your convenience, a text copy of the DataMAX Software Group Open Source Licensing Agreement is also loaded (and may be printed from) your RFgen-based system.

Requirements

- RFgen Version 5.0 or later

Table of Contents

SALES ORDER PICK CONFIRMATION 1

FSOPC0200 – SO PICK CONFIRMATION..... 3

 ✓ VALIDATIONS 5

 ✓ EDITS 5

 ⇄ FUNCTION KEYS 5

CONSIDERATIONS 6

SAP PROGRAMS – REFERENCE 7

SAP DELIVERY OVERVIEW: VL02N..... 7

BASIC TEST SCRIPT 8

RFGEN INPUT REQUIREMENTS 9

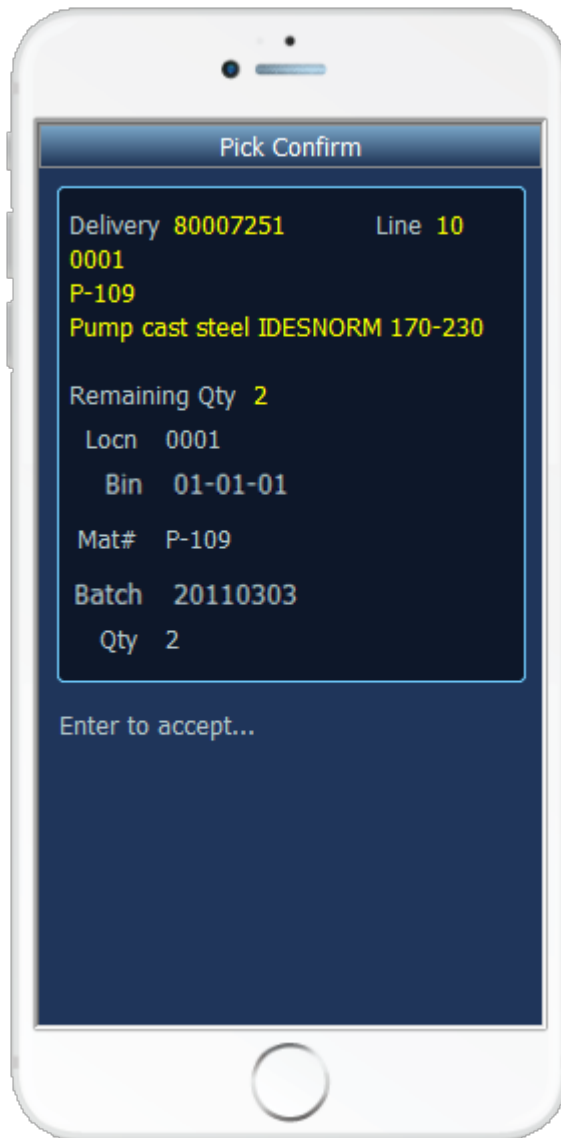
EXECUTION PROCEDURES 9

OVERALL TEST CASE RESULTS 10

FSOPC0200 – SO Pick Confirmation



Page 1



Page 2

This transaction identifies the lines on a Delivery Document and displays the lines for the user to pull inventory from the appropriate locations. Additionally, it updates the status of the items so that pack confirmation, or ship confirmation transactions can occur.

There is an option to pick confirm all lines on the document with suggested quantities. This Blind Execution is defaulted to off but can be configured on if desired.

The following conditions apply to the RFgen implementation for the Pick Confirmation transaction within the SAP environment.

Note: any of these parameters may be easily adjusted to meet the unique requirements of your company.

✓ **Validations**

Prompt	Method of Validation
Plant	T001W table CIMCU
Delivery Document	LIKPUK table CIMCU
Location	Must be the same as the displayed suggestion
Bin	Must be the same as the displayed suggestion
Material	Must be the same as the displayed suggestion
Batch	Must be the same as the displayed suggestion if it exists
Quantity	

✓ **Edits**

Condition	Special Circumstance
Default Branch Plant	User Defined
Quantity not greater than Quantity on Hand	
Quantity entered < = 0	

↩ **Function Keys**

Key	Function
F3	Exit
F4	Search Data for Current Field
F8	Submit value for the Current Screen Display

Considerations

1. Does Plant default based on user?
2. Will negative quantities be processed?
3. Is batch control used for materials?

SAP Programs – Reference

SAP Delivery Overview: VL02N

Outbound deliv. 80007824 Document date 11/12/2002
 Ship-to party 3010 Bush Distribution / 3000 North Avenue / Chicago IL 67980

Item overview Picking Loading Shipment Status overview Goods mov...

Picking date 11/12/2002 00:00 OvrIPickStatus A Not yet picked
 Whse number 300 Lean warehouse Ne... OverallWMStatus A WM Trnsf order reqd

Item	Material	Pint	SLoc	Delivery quantity	SU	Pick quantity	SU	Batch
10	M-12	3000	0001	1	PC	0	PC	

Batch split Main items All items

Basic Test Script

1. Record quantities on hand from the Item Ledger for the Plants, Materials and their associated batches and locations that you will perform the Pick Confirmation on.
2. Create and document the following scenarios:
 - a. Attempt to select a delivery document for pick confirmation that is not at the proper status. An error message should appear.
 - b. Attempt to transact on materials that are not set up in particular plants.
 - c. Select Delivery documents eligible for Ship Confirmation and process through RFgen. Test for over shipment of materials if allowed.
3. View the results using VL03N and see that the quantity on hand updated to the correct amounts on the processed transactions.

Test Script Description: SO Pick Confirmation

RFgen Input Requirements

Before you begin testing, ensure, for the combination of plant(s) and material(s) you will be testing, that the following is setup in SAP.

- a. Delivery Document
- b. Quantity Available
- c. Quantity On Hand
- d. An order activity status code for pick confirmation

Execution Procedures

ID	Test Case	Expected Result	Pass	Fail
1	Type in a valid Plant _____ Press the ENTER key	RFGEN will validate and accept the plant entered.		
2	Type in a valid Delivery Document _____ Press the ENTER key	RFGEN will validate and accept the Delivery Document entered.		
3	Type in a valid location _____ Press the ENTER key	RFGEN will validate and accept the location entered		
4	Type in a valid Bin _____ Press the ENTER key	RFGEN will validate and accept the bin entered		
5	Type in a valid Material _____ Press the ENTER key	RFGEN will validate and accept the material entered		
6	Type in a valid order quantity _____	RFGEN will validate and accept the quantity entered		
7	Type in an invalid Plant _____ Press the ENTER key	RFGEN will validate the plant entered and display an error message – the field will continue to error out until corrected		
8	Type in an invalid location _____ Press the ENTER key	RFGEN will validate and display an error message – the field will continue to error out until corrected		
9	Type in an invalid Bin _____	RFGEN will validate and display an error message – the field will		

	Press the ENTER key	continue to error out until corrected		
10	Type in an invalid Material _____ Press the ENTER key	RFGEN will validate and display an error message – the field will continue to error out until corrected		
11	Type in an invalid order quantity _____	RFGEN will validate and display an error message – the field will continue to error out until corrected		
12	Press the “F4” key with the cursor in the plant field	RFGEN will display a list of plants		
13	Press the “F4” key with the cursor in the plant field to select and return a plant to the plant field	RFGEN will display a list of plants and when selected, the plant will be returned		
14	Press the “F4” key with the cursor in the Delivery field	RFGEN will display a list of Delivery Documents		
15	At the RFGEN “Enter to Accept Prompt” the transaction is submitted	Confirm the pick confirmation results		

Overall Test Case Results

Pass/Fail	
Tester/Date	
RE-Tester/Date	

Actual Results	
-----------------------	--

Comments	
-----------------	--