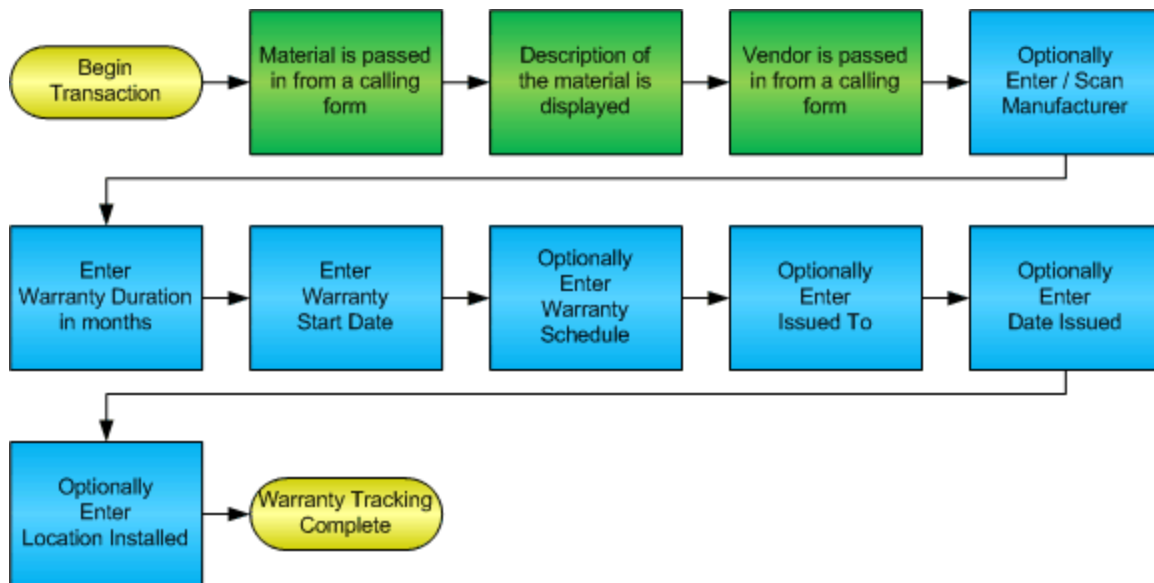


## Warranty Tracking



© RFgen, A Division of the DataMAX Software Group Inc.  
1101 Investment Boulevard, Suite 250  
El Dorado Hills, CA 95762  
(888) 426-3472

SAP® is registered trademark of SAP Corp.® and protected by national and international copyright laws.

# License Agreement

All information contained in this document is **Copyright 2012, the DataMAX Software Group, Inc. and Others, All Rights Are Reserved by DataMAX.** This document may not be published, nor used without the prior written consent of DataMAX. **Use of the RFgen Software 'Open Source' code is at all times subject to the DataMAX Open Source Licensing Agreement,** which must be accepted at the time the source code is installed on your computer system. For your convenience, a text copy of the Open Source Licensing Agreement is also loaded (and may be printed from) your RFgen based system.

Requirements:        RFgen Version 3.2.1.5 or later

## TABLE OF CONTENTS

**FWARRANTY0200 – WARRANTY TRACKING..... 2**

    VALIDATIONS..... 2

    FUNCTION KEYS..... 2

**FWARRANTY0210 – WARRANTY INQUIRY..... 3**

    VALIDATIONS..... 3

    FUNCTION KEYS..... 4

**FWARRANTY0220 – WARRANTY DETAILS ..... 5**

    VALIDATIONS..... 5

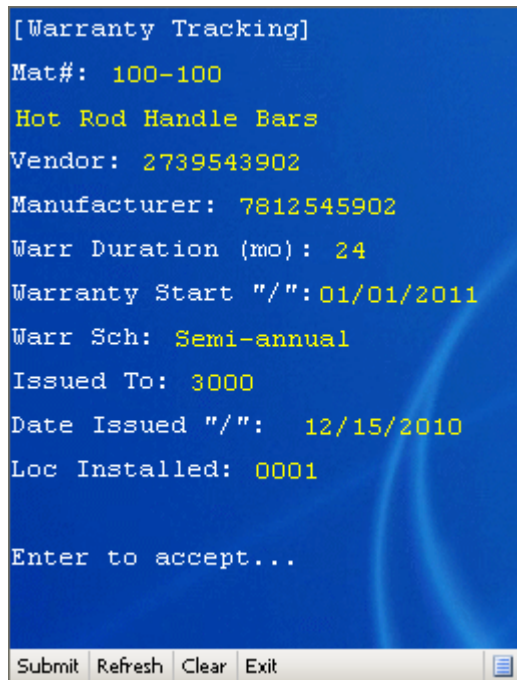
    FUNCTION KEYS..... 6

**FWARRANTY0230 – WARRANTY REPORTS ..... 7**

    VALIDATIONS..... 7

    FUNCTION KEYS..... 7

## FWarranty0200 – Warranty Tracking



[Warranty Tracking]  
Mat#: 100-100  
Hot Rod Handle Bars  
Vendor: 2739543902  
Manufacturer: 7812545902  
Warr Duration (mo): 24  
Warranty Start "/": 01/01/2011  
Warr Sch: Semi-annual  
Issued To: 3000  
Date Issued "/": 12/15/2010  
Loc Installed: 0001  
Enter to accept...

Submit Refresh Clear Exit

This transaction accepts a material number and displays the description. It also accepts a vendor code. These values are sent from the calling application, typically the PO Receiving transaction.

The manufacturer and warranty fields are allowed when this form is called from PO Receiving. The last three fields are filled in later when the Goods Issue transaction places this material into use.

The fields are filled in as needed for simply tracking warranty and other data for the life of the material. Additional warranty transactions make use of this data as described below.

This and all other warranty transactions are not a part of or connected to the SAP system. The warranty tracking solution is a standalone application that can be run in conjunction with any backend system.

Note: any of these parameters may be easily adjusted to meet the unique requirements of your company.

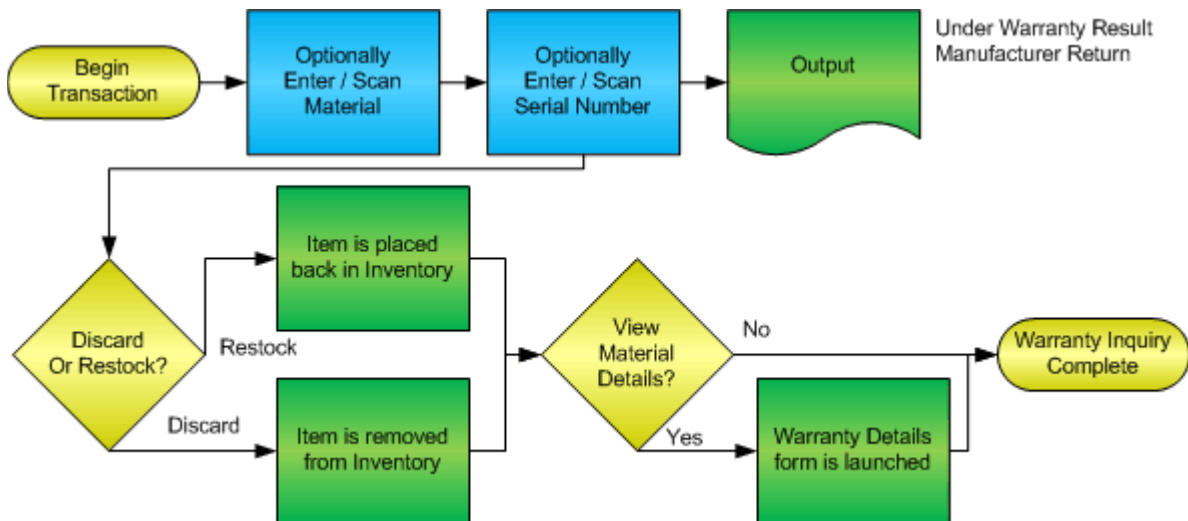
### ✓ Validations

Prompt	Method of Validation
Material	Validated before being passed in from the calling form
Description	Passed in from the calling form
Vendor	Validated before being passed in from the calling form
Manufacturer	Not validated
Warranty Duration	Not validated
Warranty Start Date	Must be a valid date
Warranty Schedule	Not validated
Issued To	Not validated
Date Issued	Must be a valid date
Location Installed	Not validated

### ↩ Function Keys

Key	Function
F3	Exit
F8	Submit value for the Current Screen Display

# Warranty Inquiry



## FWarranty0210 – Warranty Inquiry

```

[Warranty Inquiry]
Material:
100-100
Serial#: 20110304131552

Restock
Discard
Discard or Restock this Item:
Discard Restock

Warranty / Material Details

Enter to exit...

Submit Refresh Clear Exit
  
```

This transaction accepts either a material number or a serial number and looks up that part in the warranty database. A message will appear either in red or green describing if the part is under warranty. If the part is under warranty and the cost of that item is greater than a configured constant value such as \$10, then the next label suggests that the part be either sent back to the manufacturer or discarded.

The Discard or Restock option tells the system (which will update inventory) if the part is placed back in inventory or not.

The Details button allows the user to see all the details of the record. This brings up the FWarranty0220 application described below.

Note: any of these parameters may be easily adjusted to meet the unique requirements of your company.

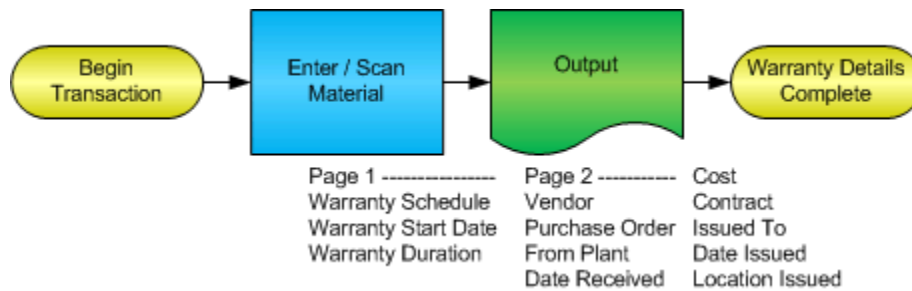
### ✓ Validations

Prompt	Method of Validation
Material	Validated against the warranty database
Serial	Validated against the warranty database

## ↩ Function Keys

Key	Function
F3	Exit
F8	Submit value for the Current Screen Display

# Warranty Details



## FWarranty0220 – Warranty Details

```

[Warranty Details]
Material:
100-100

Warranty Schedule:
Monthly

Warranty Start: 10/10/2010
Warranty Duration: 24

Material Details
  
```

```

[Material Details]
Vendor: 1356
From PO: 4500010256
From Plant: 3000
Date Received: 10/10/2010
Cost: 565.85
Contract: 11023040
Issued To: 9001
Date Issued: 01/01/2011
Loc Issued: 0001

(3/5) <-, -> Prev Page
Enter for New Query....
  
```

This transaction is called from FWarranty0210 or accepts a material number and displays the warranty specific details. The Material Details button displays page 2 which is the remaining attributes of the material's record. If more than one record exists for a particular material, page 2 will display a record count and allow the user to use the left and right arrow keys to scroll through all the records.

Note: any of these parameters may be adjusted to meet the unique requirements of your company.

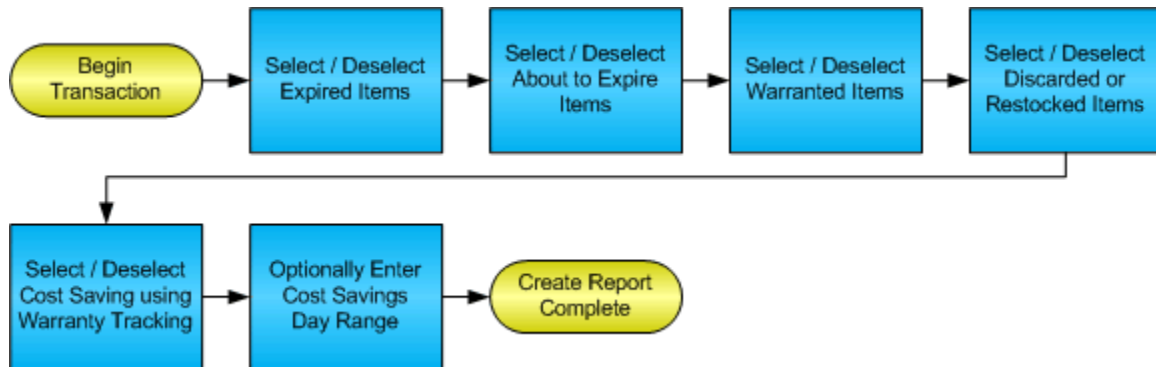
### ✓ Validations

Prompt	Method of Validation
Material	Validated against the warranty database

## ↔ Function Keys

Key	Function
F3	Exit
F8	Submit value for the Current Screen Display

# Warranty Reports



## FWarranty0230 – Warranty Reports

[Warranty Reports]

Include in report:

☐ Expired items

☐ About to expire

---

☒ All items under warranty

☐ All discarded / restocked

☒ Cost savings

in the last days: 5

Submit Refresh Clear Exit

This transaction generates text file reports that are printed to any configured printer (or PDF printer option) by referencing the warranty database

Note: any of these parameters may be easily adjusted to meet the unique requirements of your company.

### ✓ Validations

Prompt	Method of Validation
Days	Must be numeric and greater than zero

### ↔ Function Keys

Key	Function
F3	Exit
F8	Submit value for the Current Screen Display