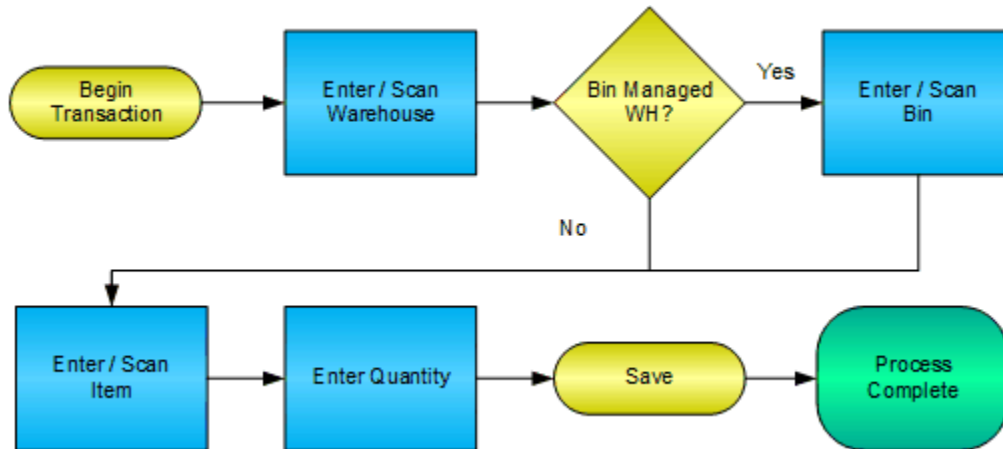


Inventory Counting



License Agreement

All information contained in this document is the intellectual property of RFgen Software, a division of the DataMAX Software Group, Inc. This document may not be published, nor used without the prior written consent of RFgen Software. Use of the RFgen Software Open Source code is at all times subject to the DataMAX Software Group Open Source Licensing Agreement, which must be accepted at the time the source code is installed on your computer system. For your convenience, a text copy of the DataMAX Software Group Open Source Licensing Agreement is also loaded (and may be printed from) your RFgen-based system.

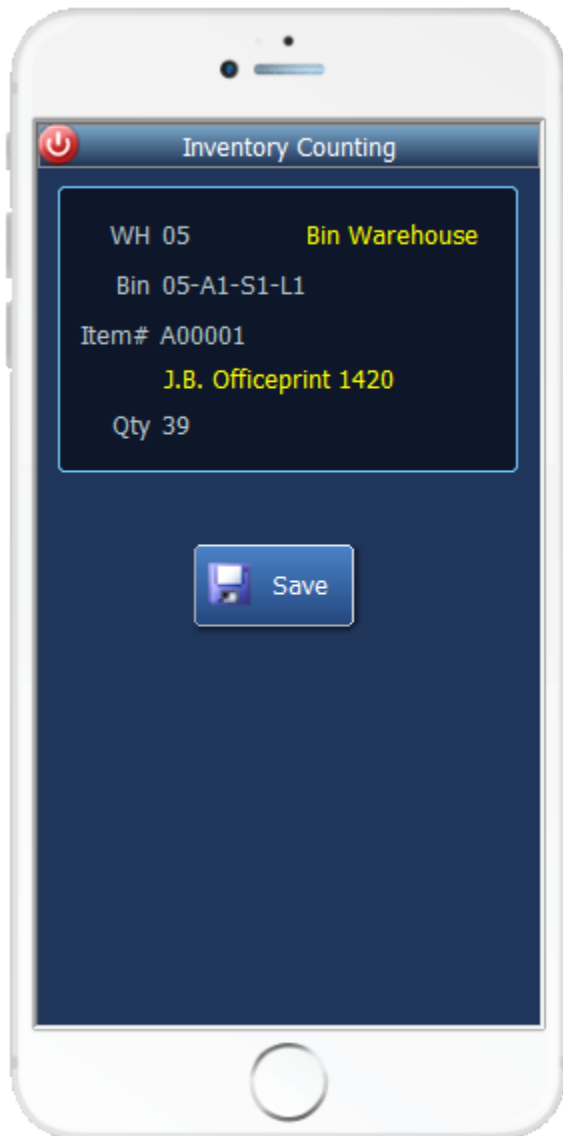
Requirements

- RFgen Version 5.0 or later

Table of Contents

INVENTORY COUNTING	3
✓ VALIDATIONS	4
✓ EDITS	4
⇨ FUNCTION KEYS	4
CONSIDERATIONS	5
SAP BUSINESS ONE PROGRAMS – REFERENCE	6
BASIC TEST SCRIPT	7
TEST SCRIPT DESCRIPTION: INVENTORY COUNTING	8
EXECUTION PROCEDURES	8
OVERALL TEST CASE RESULTS	9

Inventory Counting



The Inventory Counting mobile application allows for inventory to be counted for a specific warehouse, item number, and bin. Counts are updated with the information entered upon completion of the mobile application.

The Bin field applies to bin managed warehouses.

The following conditions apply to the RFgen implementation for the Inventory Counting mobile application within the SAP Business One environment.

Note: any of these parameters may be easily adjusted to meet the unique requirements of your company.

✓ Validations

Prompt	Method of Validation
Warehouse	OWHS
Bin	OBIN
Item	OITM
Quantity	Numeric and non-negative

✓ Edits

Condition	Special Circumstance
Default Warehouse	User Defined
Quantity entered < 0	

↩ Function Keys

Key	Function
F1	Show Menu
F4	Exit
F5	Search Data for Current Field

Considerations

1. Does Warehouse default based on user?
2. Will you allow a count of 0?
3. Is a prompt needed indicating that the count entered has a variance from the current quantity on hand?

SAP Business One Programs – Reference

Inventory Count

Inventory Counting

Count Date: 05/20/2015 Time: 15:19 No.: Primary 15
 Counting Type: Single Counter Status: Open
 Inventory Counter: User Jayson Butler Ref. 2

General

Find Item No. Warehouses << >>

#	Item No.	Item Description	Freeze	Whse	Bin Location	In-Whse Qty ...	Counted	UoM	Counted Qty	Counted Qty
1	⇒ A00001	J.B. Officeprint 1420	<input type="checkbox"/>	⇒ 05	⇒ 05-A1-S1-L1	39.000	<input checked="" type="checkbox"/>			39.000
2			<input type="checkbox"/>			0.000	<input type="checkbox"/>			0.000
						39.000				39.000

Remarks

Update Cancel Add Items Adjust Counted Quantities Copy to Inventory Posting

Basic Test Script

1. Record quantities on hand from the Warehouse, Item Numbers and their associated Bins that you will perform Counts on.
2. Create and document the following scenarios:
 - a. Enter a count of 0. If your customization disallows for a count of 0, an error should appear.
 - b. Enter a negative amount. If negative counts are not allowed, an error should appear.
 - c. Enter Quantities on Hand that differs from the current quantity on hand for an item. If your customization requires a second count, or a notification that there is a variance from the current quantity on hand, the appropriate messages should appear.
3. After completing the Count verify that the Count Status has updated.

Test Script Description: Inventory Counting

RFgen Input Requirements

Before you begin testing, ensure, for the combination of warehouse(s) and item(s) you will be testing, that the following is setup in SAP Business One.

- a. Item
- b. Item Bin
- c. In Warehouse Qty

Execution Procedures

ID	Test Case	Expected Result	Pass	Fail
1	Type in a valid Warehouse _____ Press the ENTER key	RFGEN will validate and accept the warehouse entered.		
2	Type in a valid Bin _____ Press the ENTER key	RFGEN will validate and accept the Bin as well as display the unique Bin Type. If there are more than one Bin Type, the user is prompted for the Bin Type		
3	Type in a valid item _____ Press the ENTER key	RFGEN will validate and accept the item entered.		
4	Type in an invalid Warehouse _____ Press the ENTER key	RFGEN will validate the warehouse entered and display an error message – the field will continue to error out until corrected		
5	Type in an invalid Bin _____ Press the ENTER key	RFGEN will validate and display an error message – the field will continue to error out until corrected		
6	Type in an invalid item _____ Press the ENTER key	RFGEN will validate and display an error message – the field will continue to error out until corrected		
7	Press the “F5” key with the cursor in the warehouse field	RFGEN will display a list of warehouses		
8	Press the “F5” key with the cursor in the item field to select and return an item	RFGEN will display a list of items and when selected, the item will be returned to the item field		
9	At the RFGEN “Save” the data is submitted to SAP Business One	Confirm the count results		

Overall Test Case Results

Pass/Fail	
Tester/Date	
RE-Tester/Date	

Actual Results	
-----------------------	--

Comments	
-----------------	--