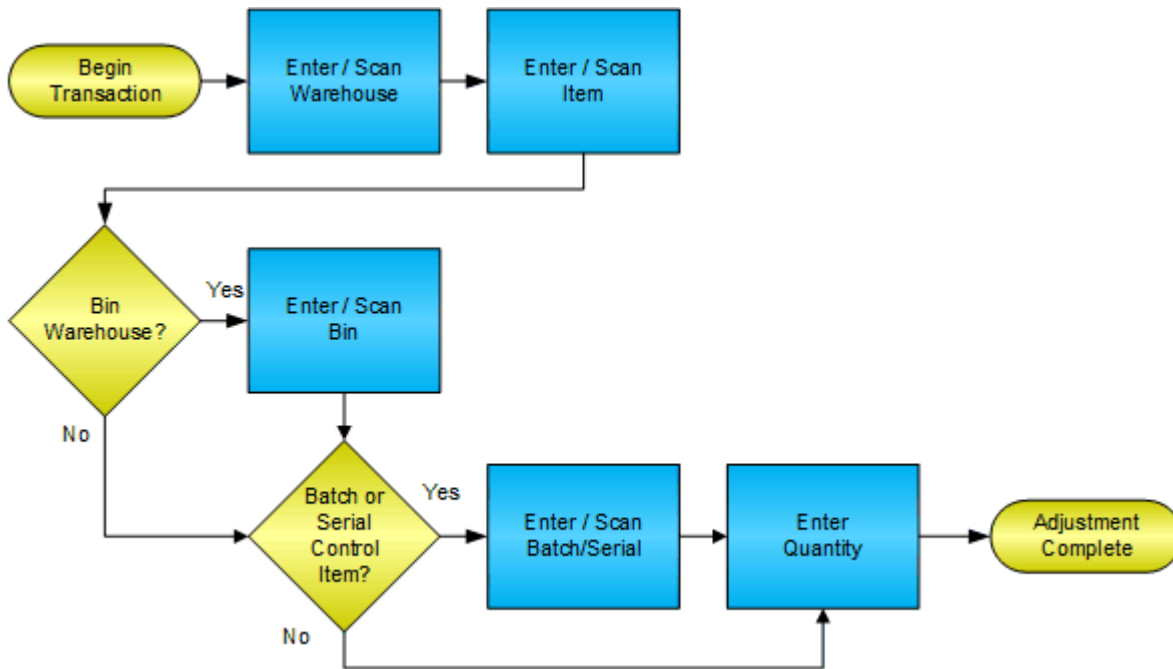


Goods Receipt



License Agreement

All information contained in this document is the intellectual property of RFgen Software, a division of the DataMAX Software Group, Inc. This document may not be published, nor used without the prior written consent of RFgen Software. Use of the RFgen Software Open Source code is at all times subject to the DataMAX Software Group Open Source Licensing Agreement, which must be accepted at the time the source code is installed on your computer system. For your convenience, a text copy of the DataMAX Software Group Open Source Licensing Agreement is also loaded (and may be printed from) your RFgen-based system.

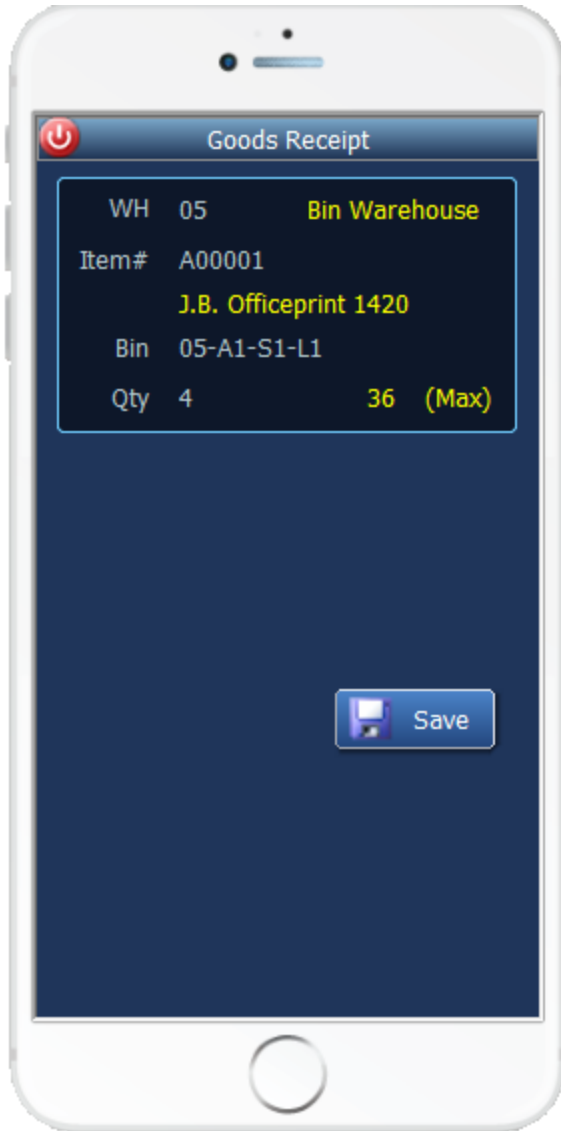
Requirements

- RFgen Version 5.0 or later

Table of Contents

GOODS RECEIPT	3
✓ VALIDATIONS	4
✓ EDITS	4
⚙ FUNCTION KEYS	4
CONSIDERATIONS	5
SAP PROGRAMS – REFERENCE	6
BASIC TEST SCRIPT	7
TEST SCRIPT DESCRIPTION: GOODS RECEIPT	8
EXECUTION PROCEDURES	8
OVERALL TEST CASE RESULTS	9

Goods Receipt



This mobile application increases inventory. A Goods Receipt record is made and the results can be seen in the inventory screen for the given item. This mobile application also supports batch controlled and serialized products.

The following conditions apply to the RFgen implementation for the Goods Receipt mobile application within the SAP Business One environment.

Note: any of these parameters may be easily adjusted to meet the unique requirements of your company.

✓ Validations

Prompt	Method of Validation
Warehouse	OWHS
Item	OITM
Batch	OBTN
Bin	OBIN
Quantity	

✓ Edits

Condition	Special Circumstance
Default Warehouse	User defined
Quantity not greater than Quantity on Hand	
Quantity entered <=0	

↔ Function Keys

Key	Function
F1	Show Menu
F4	Exit
F5	Search

Considerations

1. Do you want the Warehouse to default based on user?
2. Do you need limitations placed on the dollar amount of Goods Receipts?

SAP Programs – Reference

Goods Receipt

_ □ ×
Goods Receipt

Number	152	Series	Primary	Posting Date	06/02/2015
				Document Date	06/02/2015
Price List	Last Purchase Price			Ref. 2	

Contents
Attachments

#	Item No.	Item Description	Quantity	Unit Price	Total	Bin ...
1	➔ A00001	J.B. Officeprint 1420	4	303.85 \$	1,215.40 \$	➔ 4
					1,215.40 \$	

Remarks

Journal Remark ➔

OK
Cancel

Basic Test Script

1. Record quantities on hand from for the Warehouse, Item and their associated batches that you will perform Goods Receipts on.
2. Create and document the following scenarios:
 - a. Adjust an amount within the quantity on hand for an item.
3. View the results using the Inventory Posting List and see that the quantity on hand updated to the correct amounts on the processed transactions.

Test Script Description: Goods Receipt

RFgen Input Requirements

Before you begin testing, ensure, for the combination of warehouse(s) and item(s) you will be testing, that the following is setup in SAP Business One.

- a. Item
- b. Quantity On Hand

Execution Procedures

ID	Test Case	Expected Result	Pass	Fail
1	Type in a valid warehouse _____ Press the ENTER key	RFGEN will validate and accept the warehouse entered.		
2	Type in a valid item _____ Press the ENTER key	RFGEN will validate and accept the item entered.		
3	Type in a valid Bin _____ Press the ENTER key	RFGEN will validate and accept the Bin.		
4	Type in an invalid warehouse _____ Press the ENTER key	RFGEN will validate the warehouse entered and display an error message – the field will continue to error out until corrected		
5	Type in an invalid item _____ Press the ENTER key	RFGEN will validate and display an error message – the field will continue to error out until corrected		
6	Type in an invalid bin _____ Press the ENTER key	RFGEN will validate and display an error message – the field will continue to error out until corrected		
7	Press the “F5” key with the cursor in the warehouse field	RFGEN will display a list of warehouses		
8	Press the “F5” key with the cursor in the item field	RFGEN will display a list of items		
9	At the RFGEN “Save” the data is submitted	Confirm the goods receipt results		

Overall Test Case Results

Pass/Fail	
Tester/Date	
RE-Tester/Date	

Actual Results	
----------------	--

Comments	
----------	--